

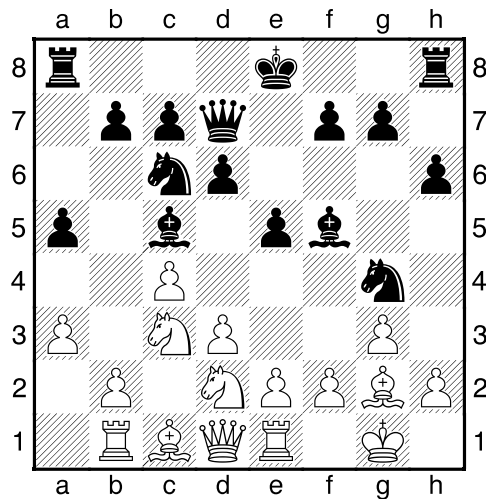
(21) Theo,Verstappen - Erwin,Fleischmann [A29]

Intern GESS, 15.12.2014
[Deep Fritz 14 x64 (10m)]

[A29: Engelse Opening: Vier Paarden Variant met 4 g3

1.c4 e5 2.Pc3 Lc5 3.Pf3 Pc6 4.g3 Pf6 5.d3 a6 6.Lg2 h6 7.0-0 d6 8.a3 [laatste zet uit boek. laatste zet uit boek]

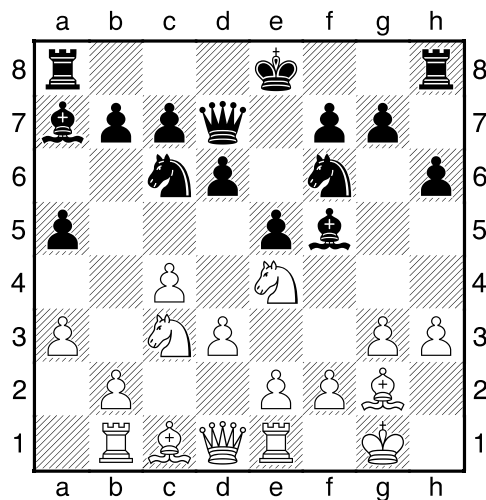
8...a5 9.Tb1 Lf5 10.Pd2 Dd7 11.Te1 Pg4 [Diagram]



Zwart dreigt met materiaalwinst: Pg4xf2

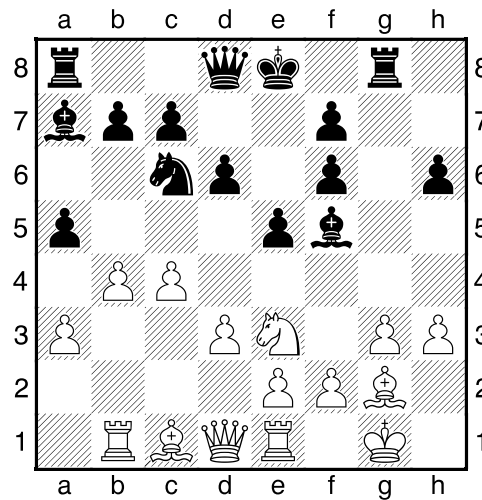
[11...0-0!?= Is een nadere analyse waard.]

12.Pde4 La7 13.h3 Pf6 [Diagram]



[13...Lxe4 14.Pxe4 f5 15.hxg4 fxe4 16.Lxe4 Dxc4 17.Kg2]

14.Pxf6+± gxf6 15.Pd5 Dd8 16.b4 Tg8 17.Pe3 [Diagram]



Wit dreigt met materiaalwinst: Pe3xf5

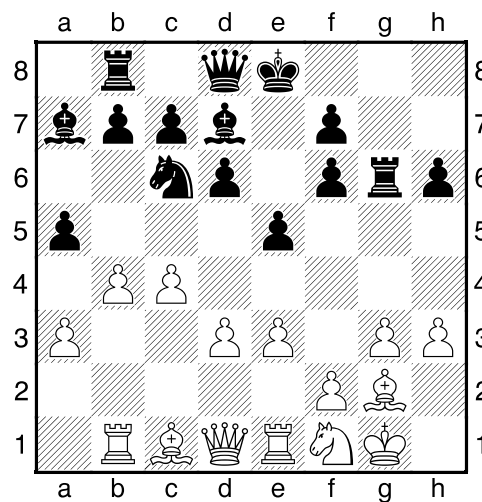
[17.b5 Tg3 18.Kf1 Tg2 19.Kxg2 Pb8+]

17...Ld7 18.Pf1 [18.c5 axb4 19.axb4 Pd4±]

18...Tg6 [18...axb4 19.axb4 Dc8 20.h4]

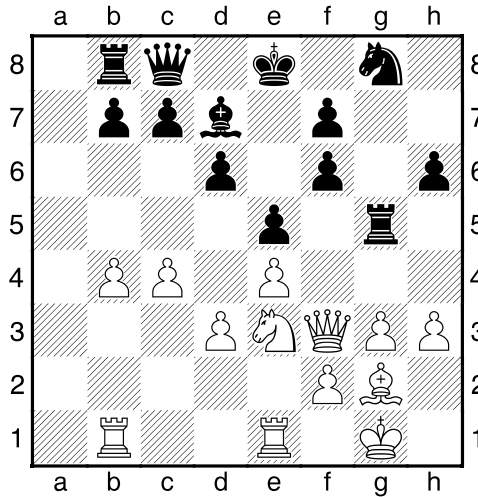
19.e3 [19.b5 Pe7 20.Lxb7 Tb8±]

19...Tb8 [Diagram]



[19...axb4 20.axb4 Dc8 21.Dh5]

20.Ld2 axb4 21.axb4 Dc8 22.Dh5 Pe7 23.e4 Pg8 24.Le3 Lxe3 25.Pxe3 Tg5 26.Df3 [Diagram]

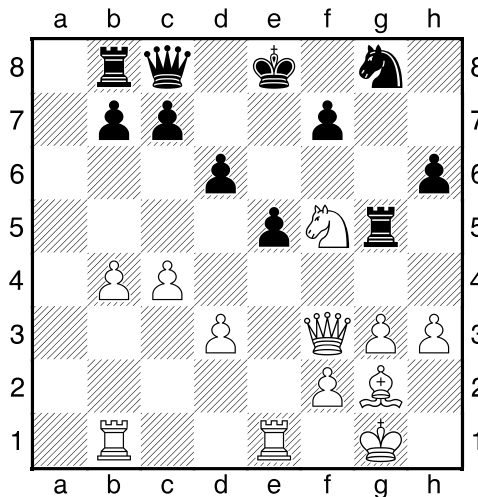


[26.Dh4 Kf8±]

26...f5? [!26...Lxh3 Is de beste kans voor zwart. 27.Ta1 Lg4 28.Pxg4 Dxg4=]

27.exf5± Lxf5? [27...Lc6 28.De2+]

28.Pxf5 [Diagram



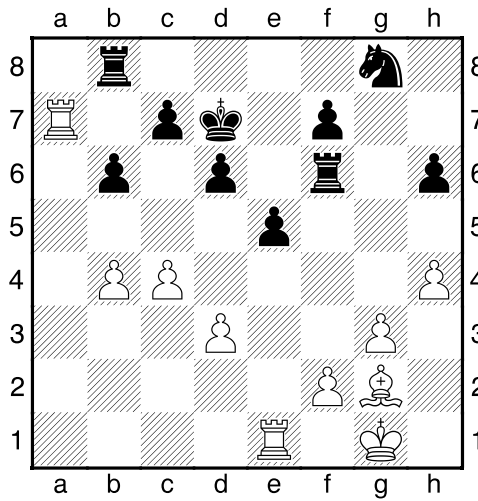
[28.h4 Levert nog groter voordeel op. 28...Lg4 29.Pxg4 Txg4 30.Lh3+]

28...Dxf5± 29.Dxf5 [29.De3 Kf8±]

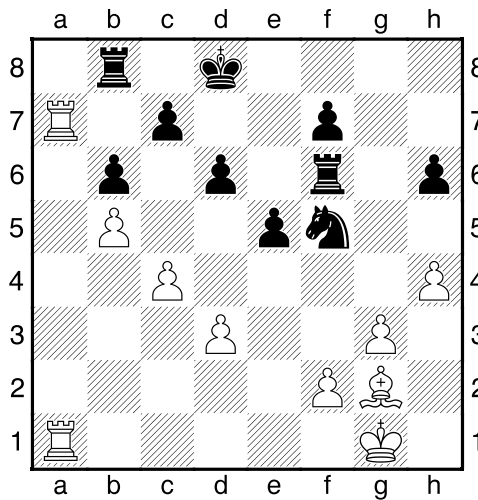
29...Txf5 30.Ta1 Kd7 [30...Pe7 31.Ta7 c6 32.b5]

31.h4± Tf6 32.Ta7 [!32.Lh3+ Kd8 33.Tad1±]

32...b6? [Diagram



[32...c6!? Is misschien sterker.; 32...c6 33.b5 Pe7 34.Lh3+ Kd8 35.Tb1 cxb5 36.cxb5]
33.b5 [33.Lh3+!? Kd8 34.Te1 Tg6+-]
33...Pe7± 34.Lh3+ Kd8 35.Te1 Pf5 36.Lg2 [Diagram]



[36.Ta8 Txa8 37.Txa8+ Ke7±]
36...Pd4 37.Ta8 Txa8 38.Txa8+ Kd7 39.Lh3+ Pe6 40.Lg2 Pd4 [Diagram]

