

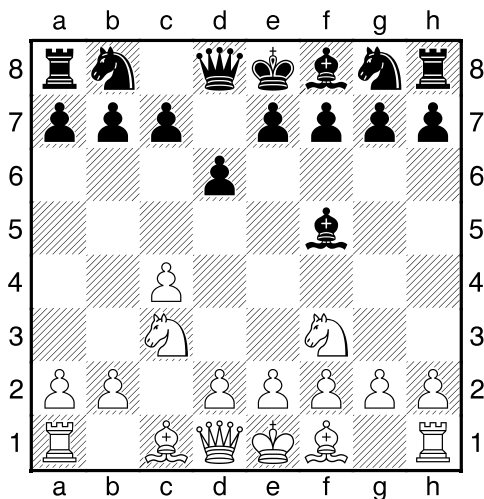
**(26) Theo,Verstappen - Tom,du Chatinier [A10]**

Intern GESS, 23.04.2018  
[Deep Fritz 14 x64 (15m)]

[A10: Engelse Opening: Ongebruikelijke Antwoorden voor Zwart]

1.c4 d6 2.Pc3 [laatste zet uit boek]

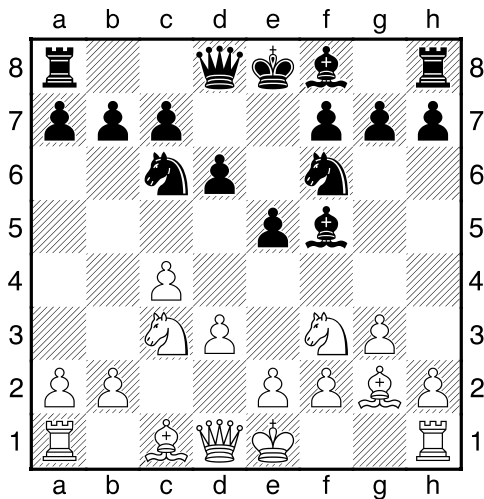
2...Lf5 3.Pf3 [Diagram



]

3...Pf6 4.d3 [Beheerst e4]

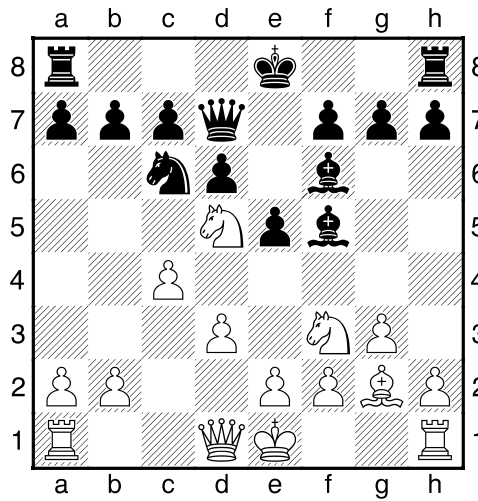
4...e5 5.g3 Pc6 6.Lg2 [Diagram



]

6...Dd7 7.Lg5 Le7 8.Lxf6 Lxf6 [Zwart heeft een loperpaar]

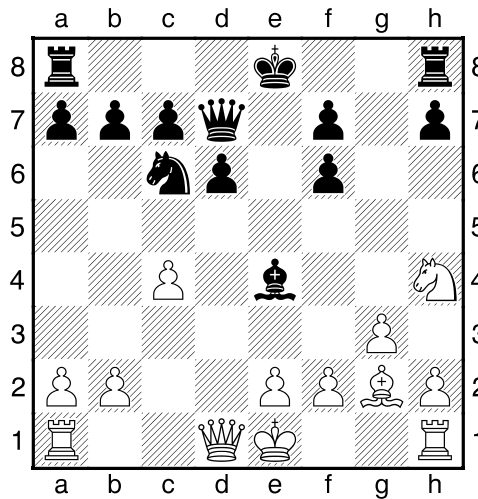
9.Pd5 [Diagram



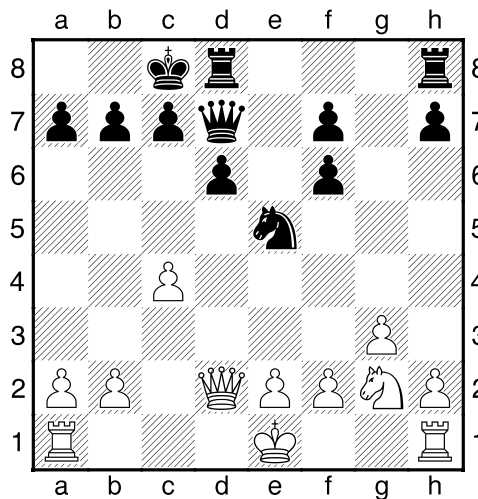
9...e4 [9...Ld8!?=]

10.Pxf6+<sup>2</sup> gxf6 11.dxe4 [11.Ph4 exd3 12.Pxf5 Dxf5 13.Dxd3 Da5+ 14.Kf1 De5<sup>2</sup>]

11...Lxe4= 12.Ph4 [Diagram

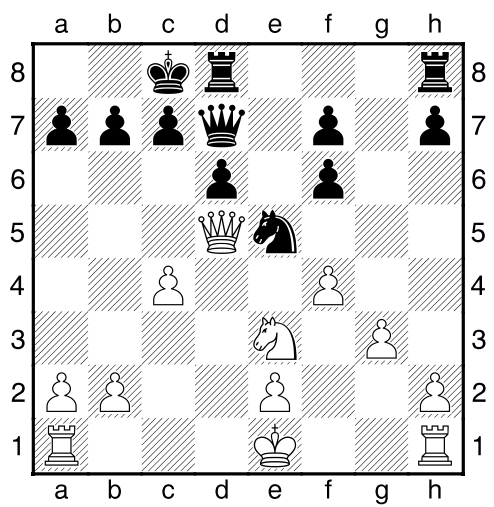


12...Lxg2 13.Pxg2 0-0-0 14.Dd2 Pe5 [Diagram



Zwart dreigt met materiaalwinst: Pe5xc4]

15.Pc3 De6 16.Dd5 Dd7 17.f4 [Diagram



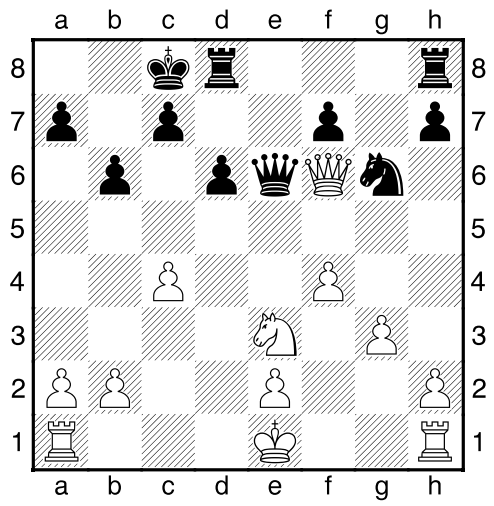
Wit dreigt met materiaalwinst: f4xe5]

17...Pg6 [17...Pc6 18.Pc2=]

18.Dd4 [18.0-0-0 Kb8=]

18...b6 [18...Kb8 19.Pd5 f5 20.0-0-0=]

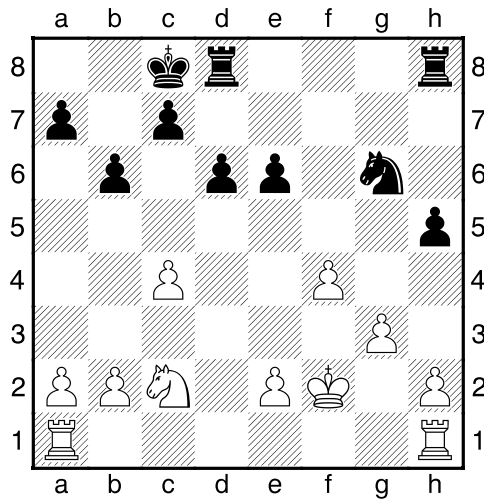
19.Dxf6² De6 [Diagram



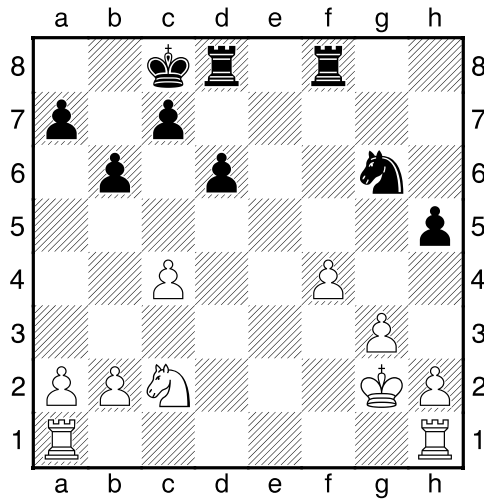
]

[19...The8!² 20.Pd5 Kb8²]

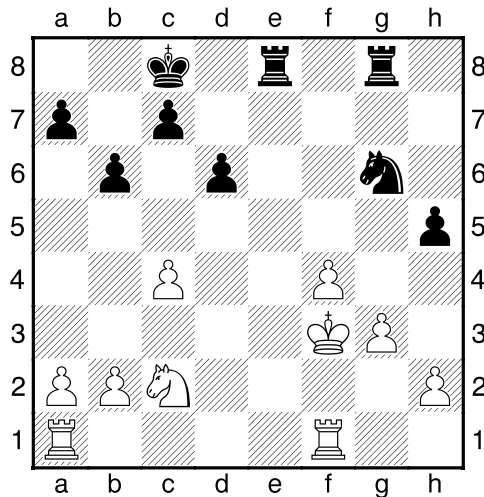
20.Dxe6±± fxe6 21.Pc2 h5 22.Kf2 [Diagram



22...Thf8 23.Kg2 e5 24.e3 exf4 25.exf4 [Diagram]

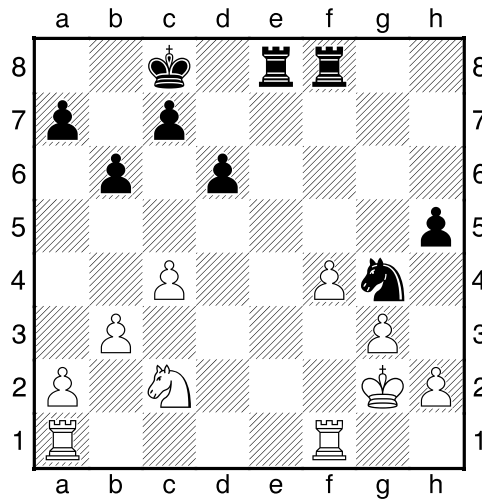


Wit heeft een nieuwe beschermde pion: f4.  
 25...Tg8 26.Thf1 Tde8 [26...Tdf8 27.Kh3±]  
 27.Kf3 [Diagram]



[27.Tae1!?±]

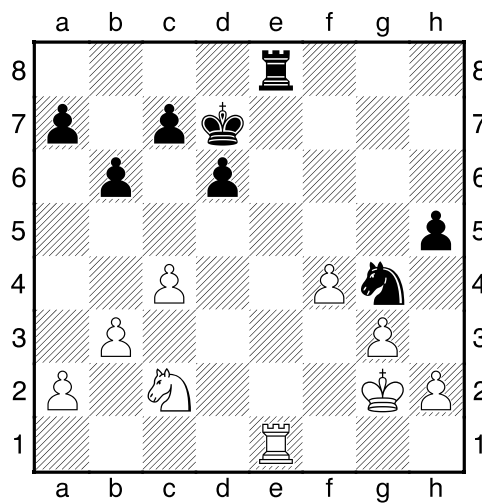
27...Tgf8 28.b3 Pe5+ 29.Kg2 Pg4? [Diagram



]

[29...Pd3!? En zwart doet nog mee. 30.Kg1 Te2±]

30.Tfe1± Kd7 31.Txe8 Txe8 32.Te1 [Diagram

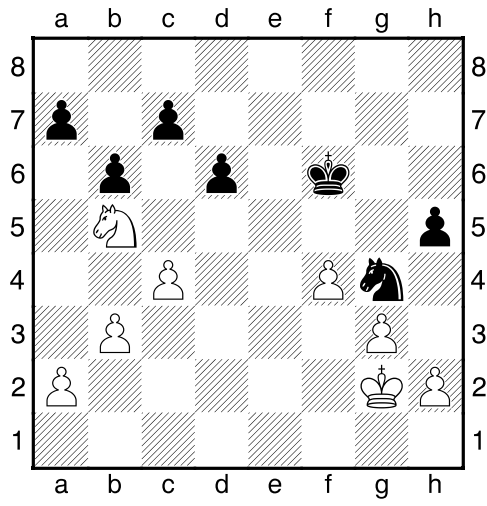


]

32...Te6 [32...Th8 33.Te2+~]

33.Txe6 Kxe6 34.Pd4+ Kf6? [34...Kd7+~]

35.Pb5 [Diagram



]

1-0