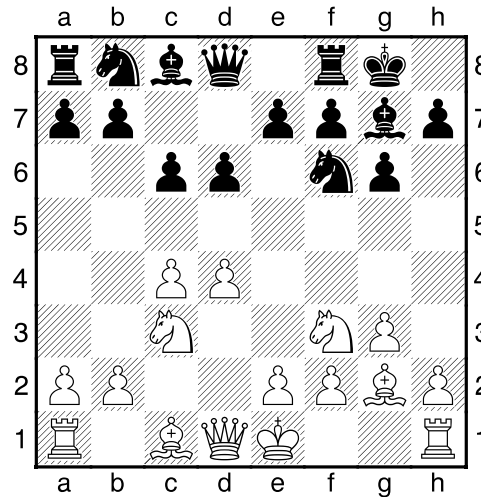


**(1) Theo,Verstappen - Rene,Mussen [E68]**

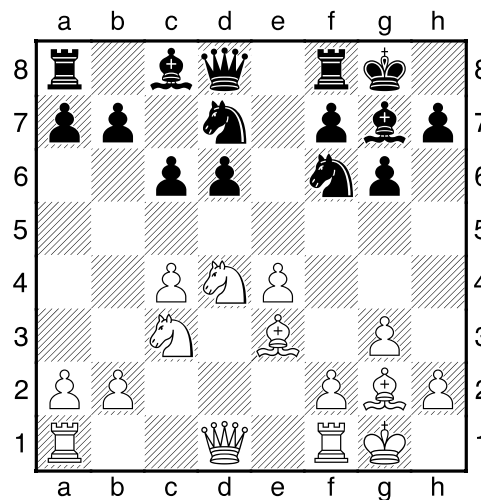
Intern GESS, 05.11.2015  
[Deep Fritz 14 x64 (20m)]

[E68: Konings-Indisch: Fianchetto: 6...Pbd7 7 0-0 e5 8 e4]

1.c4 g6 2.d4 Lg7 3.Pf3 Pf6 4.Pc3 0-0 5.g3 d6 6.Lg2 c6 [Diagram ]

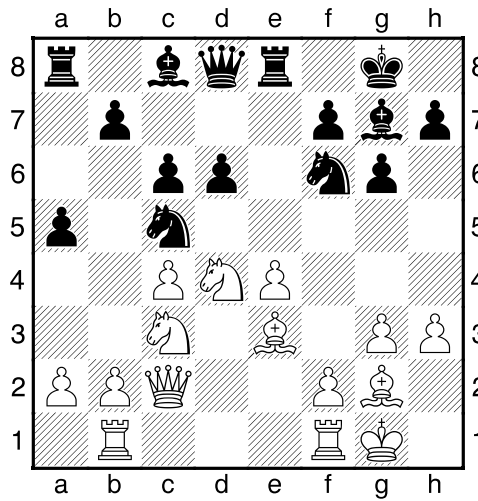


7.0-0 Pbd7 8.e4 e5 9.Le3 exd4 10.Pxd4 [Diagram ]



10...Te8 11.Tb1 Pc5 [De druk op e4 neemt toe.]

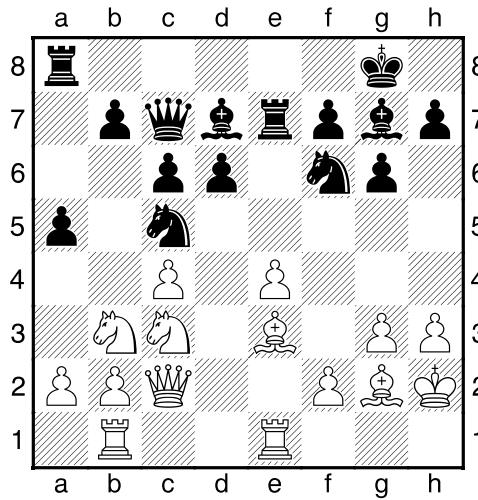
12.Dc2 a5 13.h3 [Diagram ]



[ laatste zet uit boek]

**13...Dc7 14.Tfe1 Ld7 15.Kh2** [Wit heeft een actieve stelling]

**15...Te7 16.Pb3** [Diagram ]

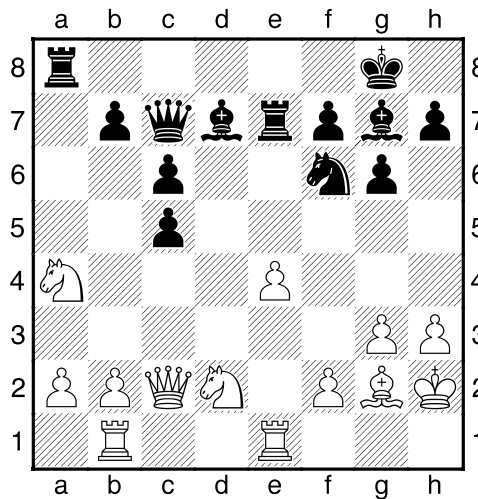


[ Wit dreigt met materiaalwinst: Pb3xc5]

**16...Pe6 17.c5 a4** [Zwart dreigt met materiaalwinst: a4xb3]

**18.Pd2** [18.cxd6!? En wit haalt alles uit de kast. 18...Dxd6 19.Pc1]

**18...Pxc5 19.Lxc5 dxc5 20.Pxa4** [Diagram ]

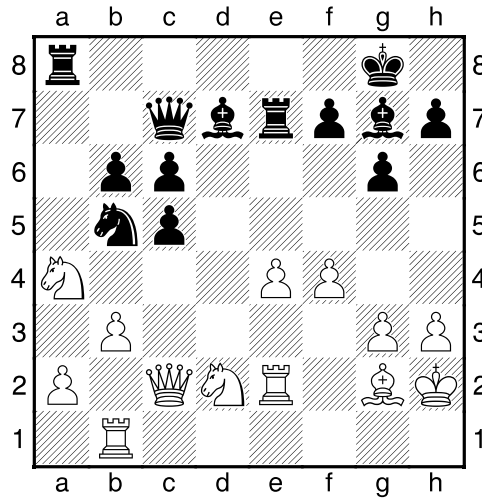


20...b6 [Zekert c5]

21.b3 Pe8 [21...Tae8 22.a3]

22.f4<sup>s</sup> Pd6 23.Te2 [23.e5!? Lijkt een sterk alternatief. 23...Pf5 24.Pc4]

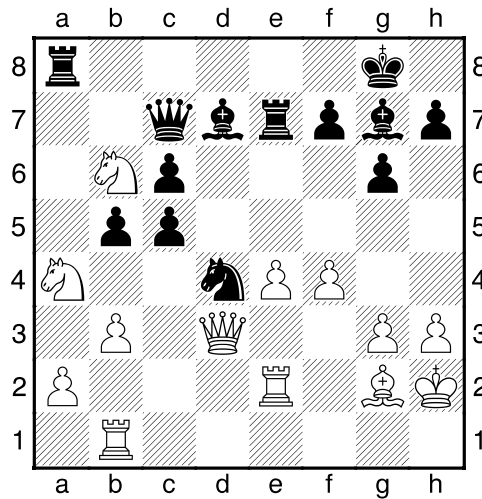
23...Pb5 $\mu$  [Diagram]



24.Pc4?? [Neemt de zorgen niet weg.]

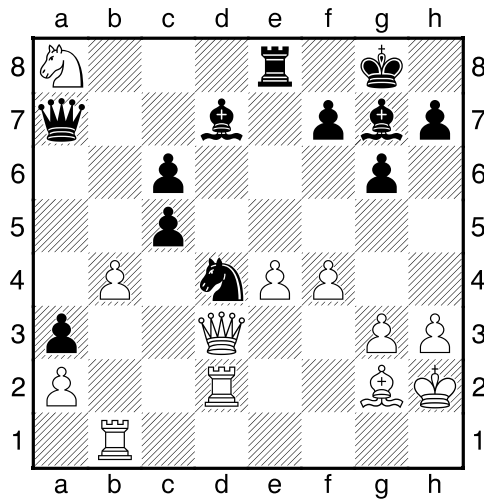
[!24.Dc1 $\mu$ ]

24...Pd4+ 25.Dd3 b5 26.Pcb6 [Diagram]



26...bxa4 [!26...Td8 Leidt nog sneller tot winst. 27.Tf2 bxa4 28.Pxa4 Pb5+]

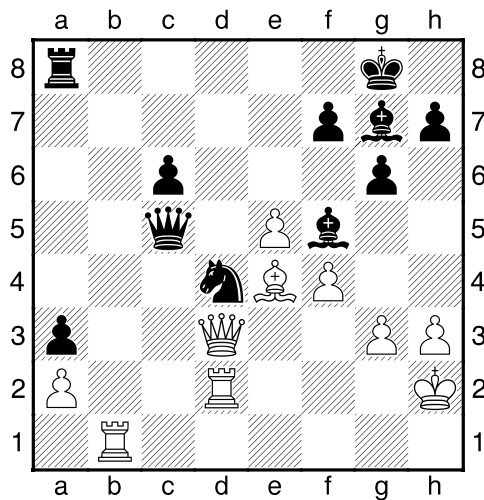
27.Pxa8 Da7 28.Teb2 a3 29.Td2 Te8 30.b4 [Diagram]



30...Txa8 [30...cxb4!? 31.Txb4 c5 32.Tb1 Txa8 33.De3-+]

31.bxc5µ Dxc5 32.e5 [!32.De3!?!]

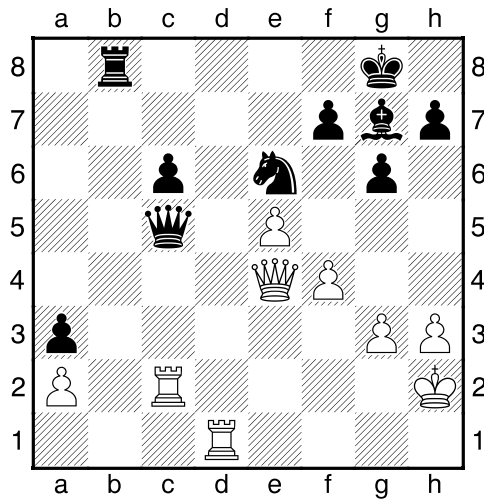
32...Lf5-+ 33.Le4 [Diagram ]



33...Lxe4 [!33...Td8!? 34.Tg2 Le6-+]

34.Dxe4µ Pe6 35.Tbd1 [35.h4!?!]

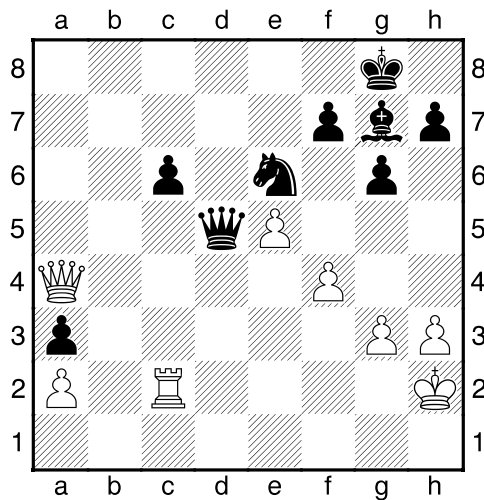
35...Tb8-+ 36.Tc2 [Diagram ]



36...Tb2 37.Tdd2 Txc2 [!37...Db5!?!-+]

38.Txc2 Dd5

39.Da4?? [Diagram ]



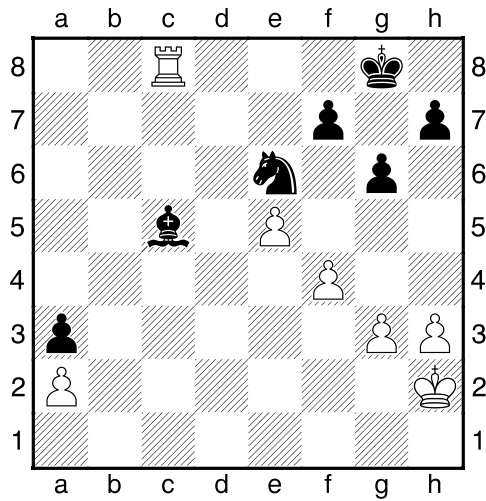
[Geeft nog meer terrein prijs.]

[39.Dxd5 cxd5 40.Kg2 Lf8μ]

39...Lf8 [39...Pd4 Discussie gesloten. 40.Da8+ (40.Tf2 Pf3+ 41.Kh1 Pxe5+ 42.Kh2 Pf3+ 43.Kh1 Pd2+ 44.Kh2)  
40...Lf8-+ 41.Tf2 Pf3+ 42.Kg2 Pxe5+ 43.Kh2 Pf3+ 44.Kg2 Pd2+ 45.Kh2 Kg7]

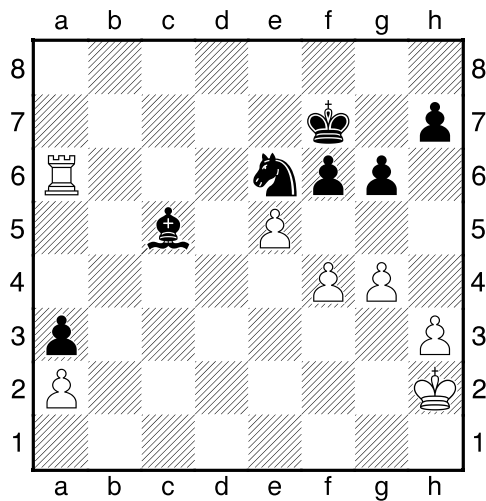
40.Dxc6μ Dxc6 [!40...Dd1!?! 41.De4 Pd4]

41.Txc6= Lc5 42.Tc8+ [Diagram ]



42...Kg7 43.Ta8 f6 44.Ta6 [Wit dreigt met materiaalwinst: Ta6xe6]

44...Kf7 45.g4 [Diagram ]



[45.exf6 h5=]

45...fxe5 46.fxe5

½-½