

(71) Theo,Verstappen - Koert,Laenen [A25]

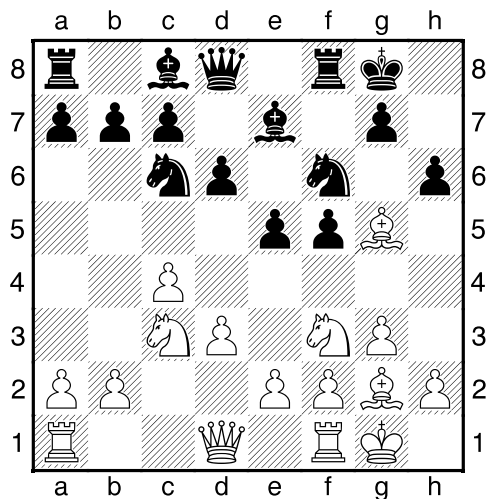
Intern GESS 16-10-2017, 17.10.2017

[Deep Fritz 14 x64 (15m)]

[A25: Engelse Opening vs Konings-Indisch met ...Pc6 maar zonder vroege d3]

1.c4 e5 2.Pc3 f5 3.g3 Pf6 4.Lg2 Pc6 5.d3 Le7 6.Pf3 d6 7.0-0 0-0 [laatste zet uit boek]

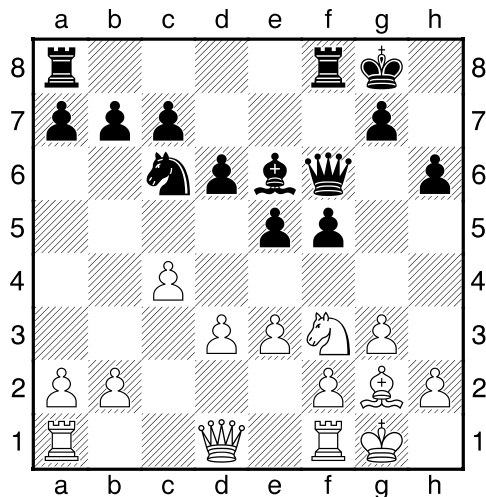
8.Lg5 h6 [Diagram



]

9.Lxf6 Lxf6 [Zwart heeft een loperpaar]

10.Pd5 Le6 11.Pxf6+ Dxf6 12.e3 [Diagram

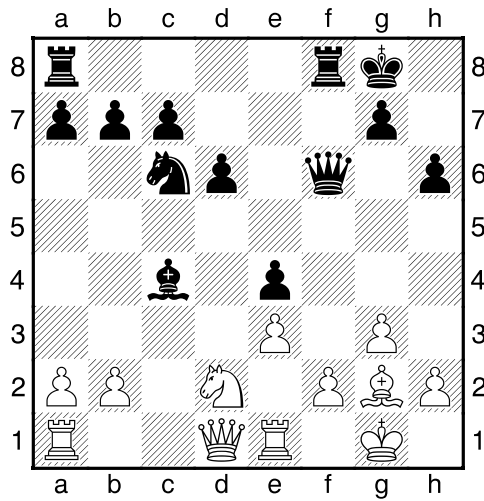


Beheerst d4]

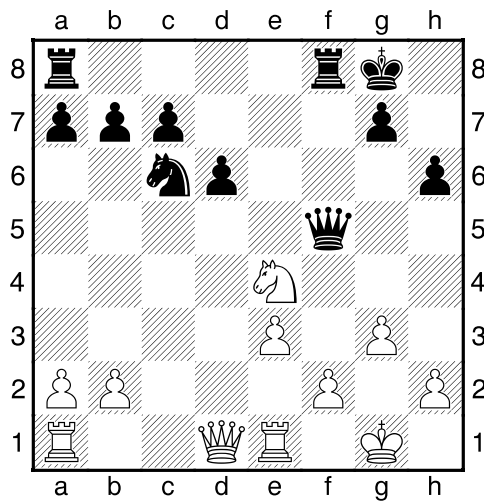
12...e4 13.dxe4 [13.Pd4!? Is een interessant alternatief. 13...Pxd4 14.exd4³]

13...Lxc4µ 14.Te1 [14.exf5!? Lxf1 15.Dxf1 Dxf5 16.Tc1µ]

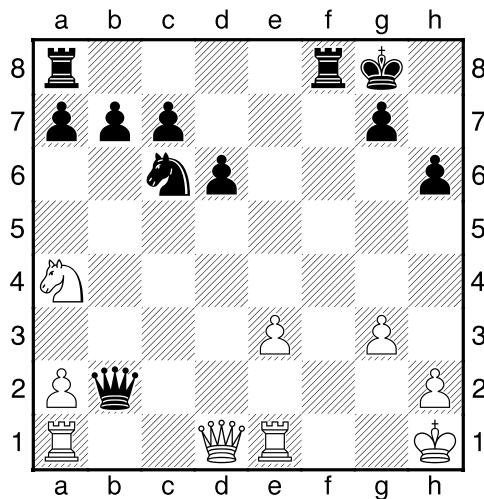
14...fxe4+ 15.Pd2 [Diagram



15...Ld3 [15...Dxf2+ 16.Kh1 Df7 17.Pxe4-+]
16.Lxe4? [16.Pxe4!?! Lxe4 17.Lxe4 Dxf2+ 18.Kh1μ]
16...Lxe4 [16...Dxf2+!?! 17.Kh1 Lxe4+ 18.Pxe4 Dxb2 19.Dd5+ Kh8 20.Tab1-+]
17.Pxe4 Df5 [Diagram]



18.Pc3? [18.f3 Dxf3 19.Dxf3 Txf3 20.Pc3-+]
18...Dxf2+ 19.Kh1 Dxb2 20.Pa4 [Diagram]

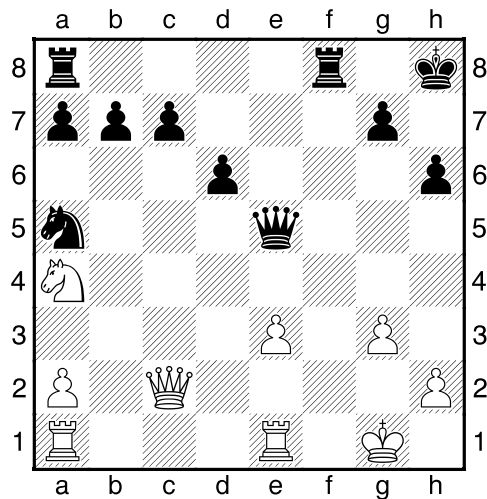


]

[20.Dd5+ Kh8 21.Db3 Df2-+]

20...De5 21.Db3+ [21.Kg1 De6-+]

21...Kh8 22.Kg1 Pa5 23.Dc2 [Diagram



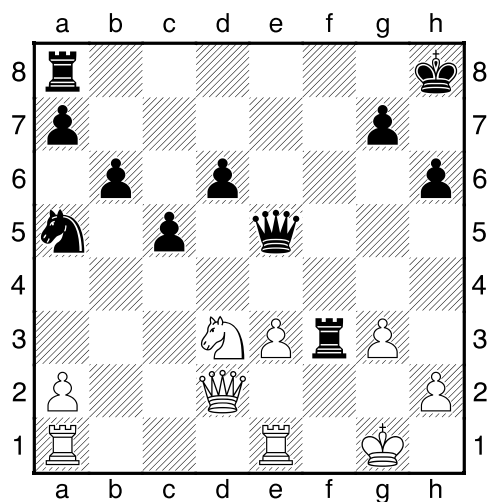
]

23...c5 [23...Tf3 Dit maakt het voor zwart nog eenvoudiger. 24.Dc3 Te8 25.Dxe5 Txe5 26.Tac1-+]

24.Pb2 [24.Tad1 Tad8-+]

24...Tf3 25.Dd2 b6 [25...Taf8 Lijkt nog beter. 26.Tac1 Df6 27.Pd3-+]

26.Pd3 [Diagram

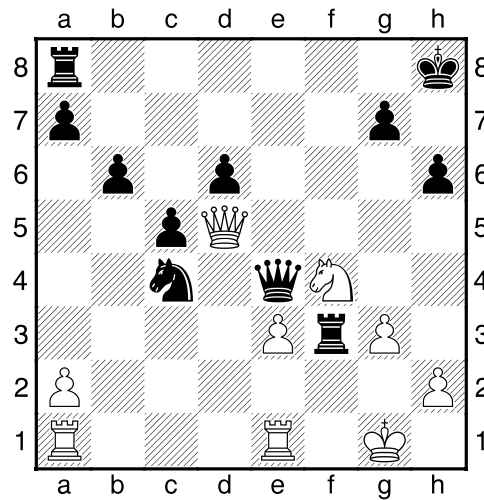


]

[26.Tad1 Dit lost niets op. 26...Taf8 27.Pd3 De4-+]

26...De4 27.Pf4 [27.Pf2 Een vruchteloze poging om het lot te ontlopen. 27...De6 28.De2 Taf8-+]

27...Pc4 28.Dd5 [Diagram



]

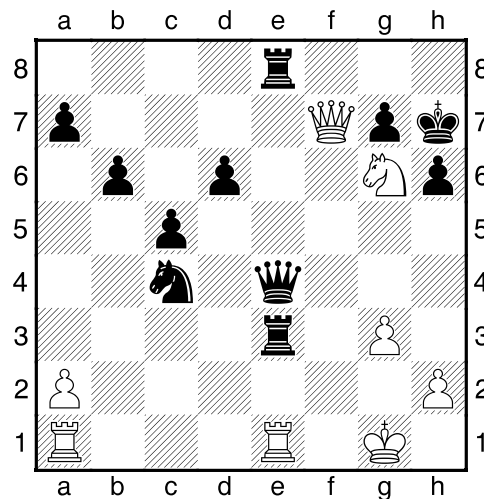
[28.Dc3 Dit verbetert nauwelijks iets aan de stelling. 28...d5 29.Db3 Txe3→]

28...Te8 [!28...Txf4 En zwart haalt de buit binnen. 29.Dxa8+ Dxa8 30.exf4 d5→]

29.Df7 [29.Dxe4 Dit lost niets op. 29...Txe4 30.Pd5 Pxe3→]

29...Txe3 30.Pg6+ [30.Ted1 Dit kan de uitslag niet meer beïnvloeden. 30...Pd2! Lokaas: d2 31.Txd2 Te1+ 32.Txe1 Dxe1+ 33.Kg2 Dxd2+ 34.Kh3 De1→]

30...Kh7 [Diagram



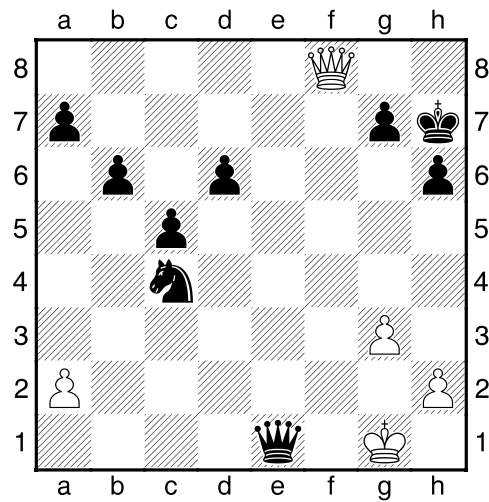
]

31.Pf8+ [31.Tf1 De laatste strohalm. 31...Pd2 32.Pf8+ Txf8 33.Dxf8 Pxf1 34.Txf1→]

31...Txf8! [Lokaas: f1]

32.Dxf8 [32.Dxf8 Txe1+ Lokaas; ...32.-- Txf7 Mat dreiging]

32...Txe1+ 33.Txe1 Dxe1+ [Diagram

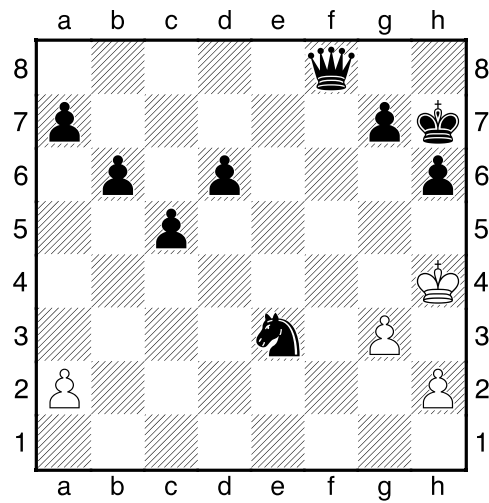


]

34.Kg2 Pe3+ [34...De2+ 35.Kg1 Pe3 36.Df5+ Pxf5 37.a3 Pe3 38.h4 Dg2#]

35.Kh3 Df1+ [35...De2 36.Df5+ Pxf5 37.a4 Pe3 38.a5 Dg4#]

36.Kh4 Dxf8 [Diagram



]

[36...g5+ 37.Kh5 Dh3#]

0-1