

(2) Theo,Verstappen - Imer,Visoka [A40]

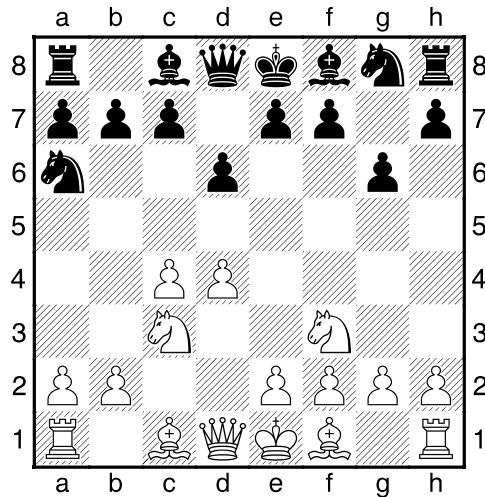
Intern GESS, 13.11.2017
[Deep Fritz 14 x64 (15m)]

[A40: Ongebruikelijke Antwoorden op 1 d4]

1.c4 g6 2.d4 [laatste zet uit boek]

2...Pa6 3.Pf3 d6 [Beheerst e5]

4.Pc3 [Diagram



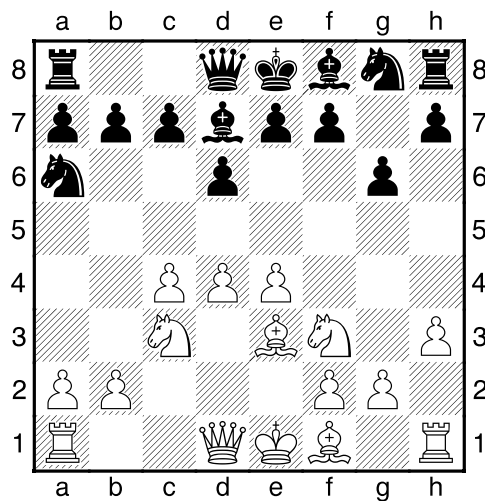
]

4...Lf5 [4...Pf6 5.e4²]

5.e4± Lg4 6.h3 [6.Db3 Tb8±]

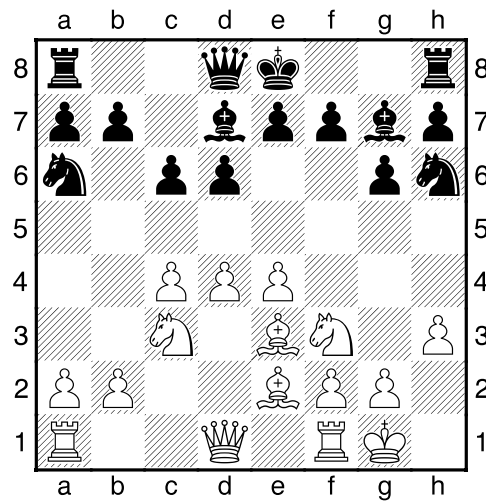
6...Ld7 [6...Lxf3!? Lijkt een sterk alternatief. 7.Dxf3 Lg7²]

7.Le3 [Diagram



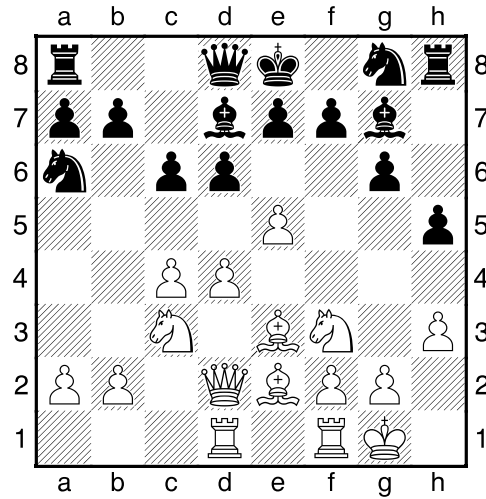
]

7...Lg7 8.Le2 c6 9.0-0 Ph6 [Diagram



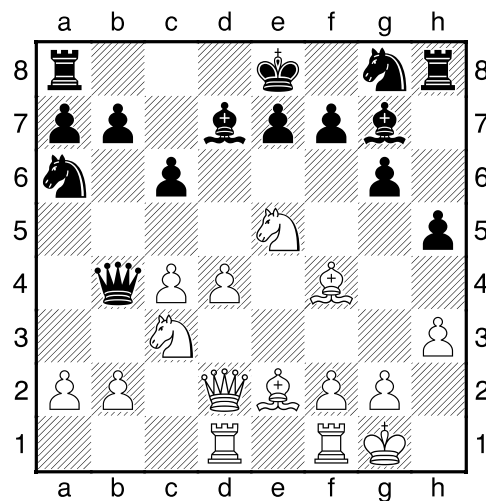
[9...Dc7 10.Tb1±]

10.Dd2+- Pg8 11.Tad1 h5 12.e5 [Diagram



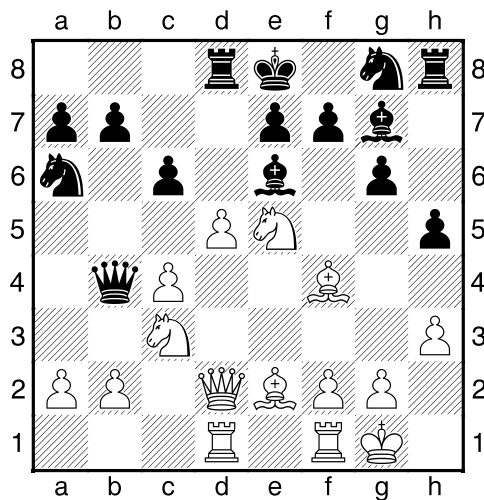
12...Dc7 [12...dxe5!? 13.dxe5 Ph6 14.Pe4±]

13.exd6 Dxd6 14.Lf4 Db4 15.Pe5 [Diagram



15...Le6? [15...Lf5+-]

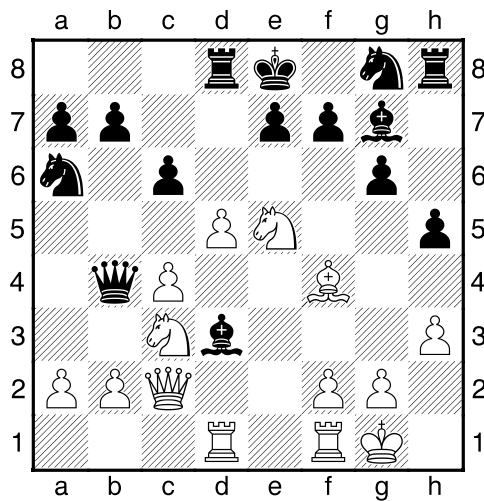
16.d5 Td8 [Diagram



]

17.Dc2 [17.dxe6 En zwart kan direct opgeven. 17...Txd2 18.exf7+ Kf8 19.Txd2+-]

17...Lf5 18.Ld3 Lxd3 [Diagram



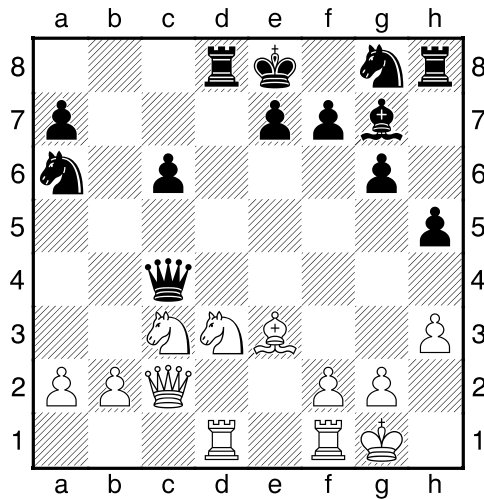
]

19.Pxd3 [19.Txd3!? Pc5 20.Tf3+-]

19...Dxc4± 20.dxc6 bxc6?? [En het gaat verder bergafwaarts..]

[20...Dxc6 21.Pe5 Lxe5 22.Txd8+ Kxd8 23.Lxe5 Th7±]

21.Le3 [Diagram



]

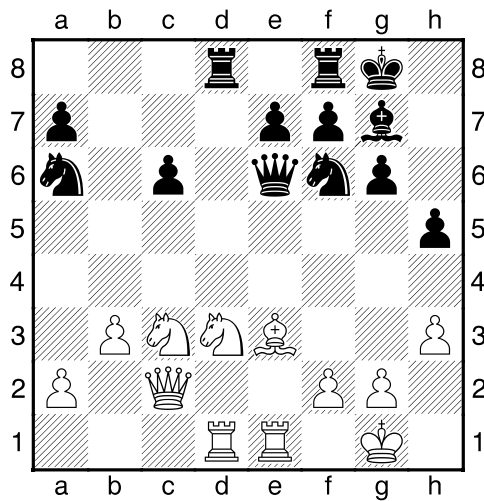
[21.Pe5 Hiermee zou wit definitief uit de problemen zijn. 21...Lxe5 22.Txd8+ Kxd8 23.Lxe5 Pf6+–]

21...Pf6?? [21...Pc7 22.Pf4 Pd5 23.Pcxd5 cxd5 24.Dxc4 dxc4 25.Txd8+ Kxd8 26.Tc1²]

22.b3 [Wit dreigt met materiaalwinst: b3xc4]

[¹22.Pe5 Is de snelste weg. 22...De6 23.Txd8+ Kxd8 24.Dd3+ Pd7 25.Pxd7+–]

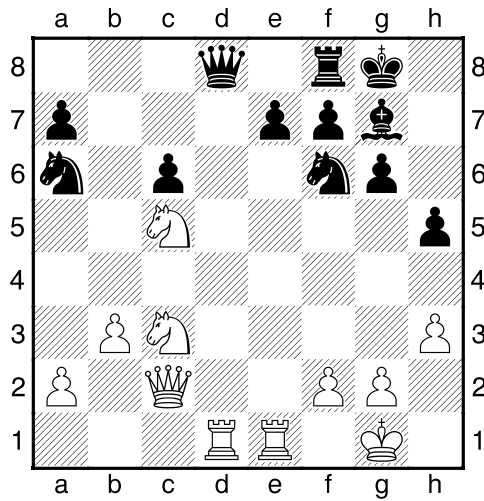
22...De6² 23.Tfe1 0–0? [Diagram



]

[¹23...Dc8² Houdt de strijd gaande.]

24.Lb6+– Dc8 25.Lxd8 Dxd8 26.Pc5 [Diagram

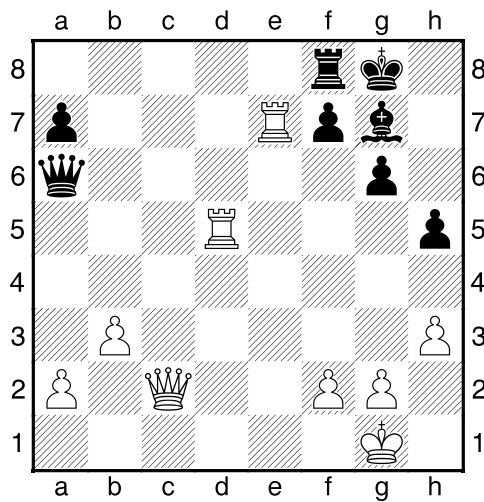


]

26...Db6 [26...Pb4 27.Txd8! Dat was de bedoeling. 27...Pxc2 28.Ted1+--]

27.Pxa6 Dxa6 28.Txe7 Pd5 [28...Da3 29.De2 Db4+--]

29.Pxd5 cxd5 30.Txd5 [Diagram



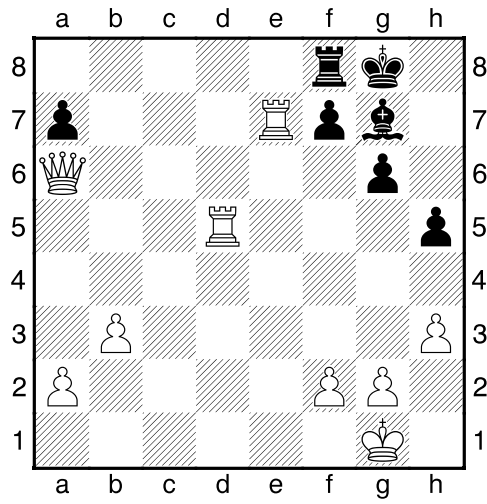
]

30...Tc8 [30...Lf6 Kan het voorafgegene niet meer ongedaan maken. 31.Ted7+--]

31.De2 [31.Txa7! Dit maakt het voor wit nog eenvoudiger. 31...De6 32.Dd1 Lh6 33.Td8+ Txd8 34.Dxd8+ Lf8+--]

31...Tf8 [31...Dxe2 De beste praktische kans. 32.Txe2 Tc1+ 33.Kh2 Lf8+--]

32.Dxa6 [Diagram



]

[32.Dxa6 Kh8 33.Tdd7 Kg8 34.Txf7 Txf7 35.Dc4 Kh7 36.Dxf7 Kh6 37.h4 Lb2 38.Dh7#]

1-0