

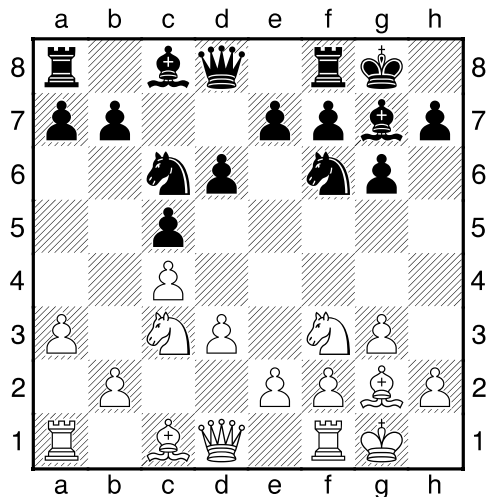
(9) Theo,Verstappen - Rene,Chapin [A38]

04.01.2016

[Deep Fritz 14 x64 (20m)]

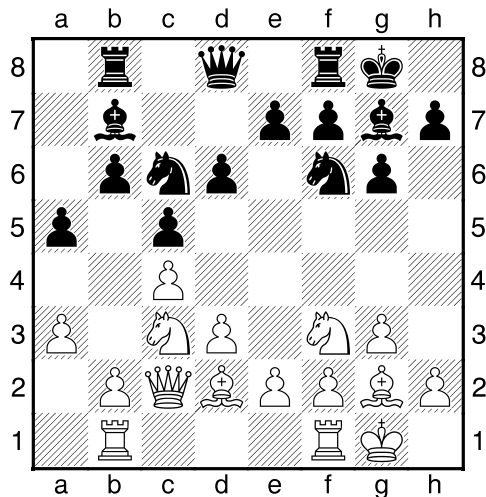
[A38: Symmetrisch Engels vs ...g6: 4 Lg2 Lg7 5 Pf3 Pf6]

1.c4 e5 2.Pc3 Pc6 3.g3 g6 4.Lg2 Lg7 5.Pf3 Pf6 6.0-0 0-0 7.d3 d6 8.a3 [Diagram]



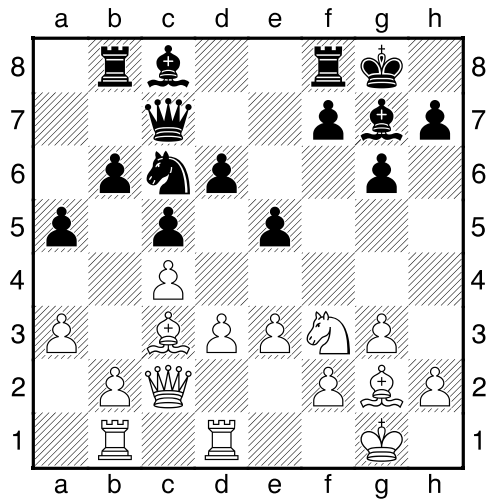
8...a5 [laatste zet uit boek]

9.Ld2 Tb8 10.Dc2 b6 11.Tab1 Lb7 [Diagram]



12.e3 [Beheerst d4]

12...e5 13.Pb5 Pe8 14.Lc3 Pc7 15.Pxc7 Dxc7 16.Tfd1 Lc8 [Diagram]

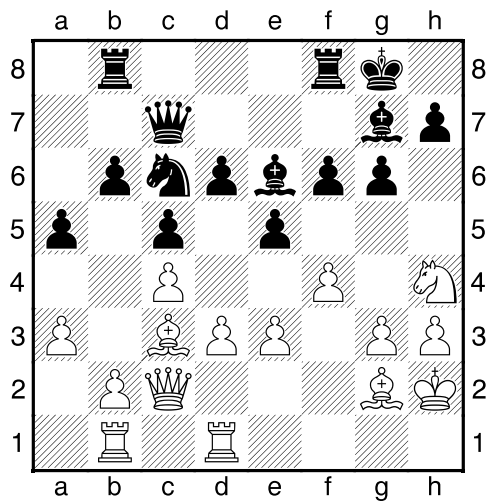


17.h3 [Zekert g4]

17...Lf5 18.Ph4 Le6 19.f4 [19.Pf3 h6=]

19...f6 [19...b5 20.b3]

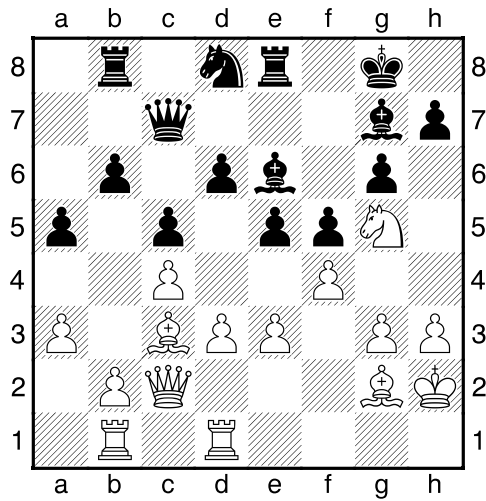
20.Kh2 [Diagram]



20...f5 [20...b5 21.b3³]

21.Pf3= Tfe8 [21...Lf6 22.d4 e4 23.d5 exf3 24.Lxf3=]

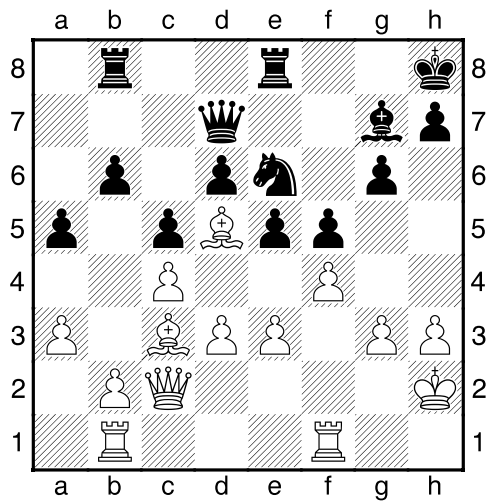
22.Pg5² Pd8 [Diagram]



23.Pxc6 Pxc6 24.Ld5 ['de looper is de looper!']

24...Kh8 25.Tf1 [25.Te1 Dd7]

25...Dd7 [Diagram]



26.Dg2 De7

½-½