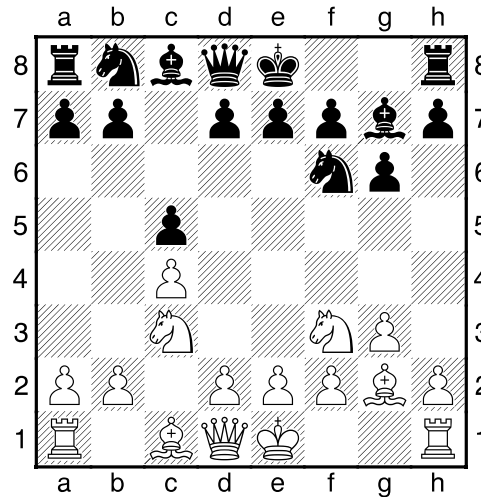


(109) Theo,Verstappen - Koert,Laenen [A38]

Intern GESS, 09.03.2020
[Deep Fritz 14 x64 (15m)]

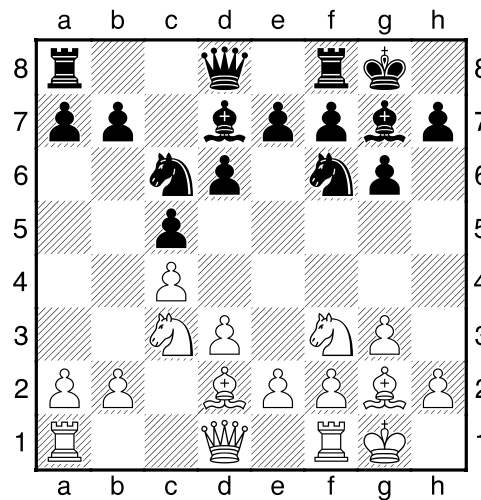
[A38: Symmetrisch Engels vs ...g6: 4 Lg2 Lg7 5 Pf3 Pf6]

1.c4 c5 2.Pc3 g6 3.Pf3 Lg7 4.g3 Pf6 5.Lg2 [Diagram



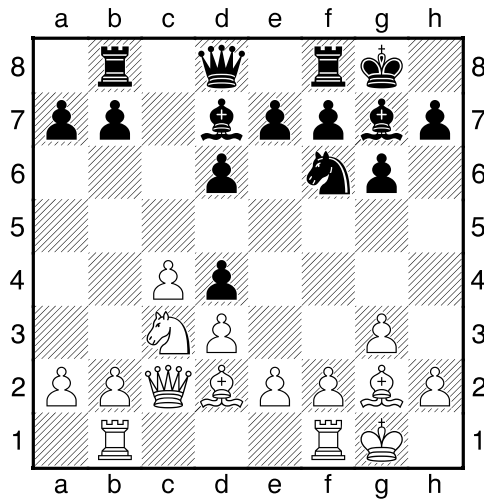
]

5...Pc6 6.0-0 0-0 7.d3 d6 8.Ld2 Ld7 [Diagram



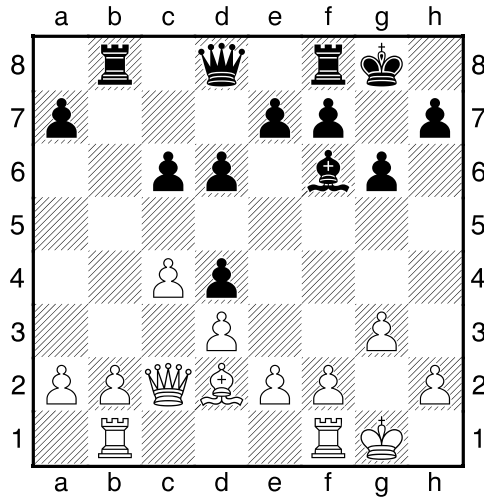
laatste zet uit boek]

9.Tb1 Tb8 10.Dc2 Pd4 11.Pxd4 cxd4 [Diagram

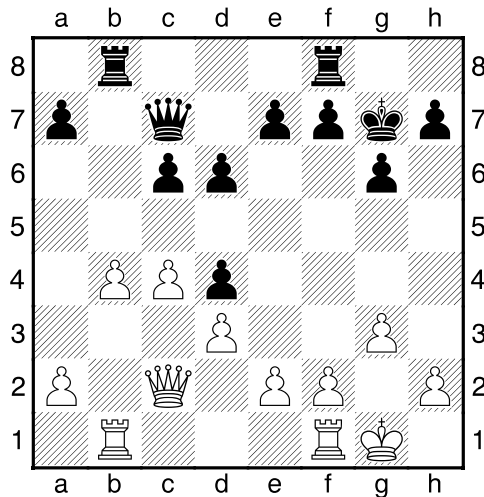


Zwart heeft nieuwe dubbele pionnen: d4+d6]

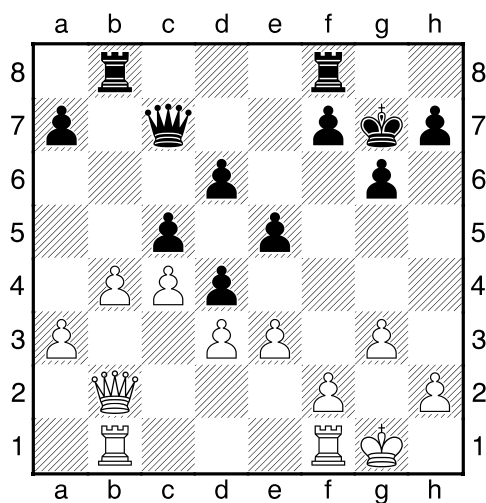
12.Pe4 Lc6 13.Pxf6+ Lxf6 14.Lxc6 bxc6 [Diagram



15.Lh6 Lg7 16.Lxg7 Kxg7 17.b4 Dc7 [Diagram

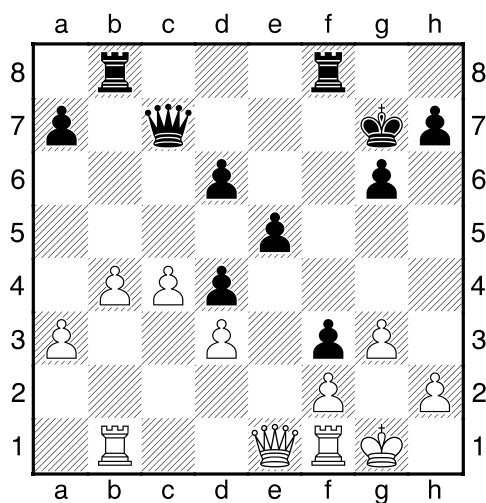


18.Db2 c5 19.a3 e5 20.e3 [Diagram



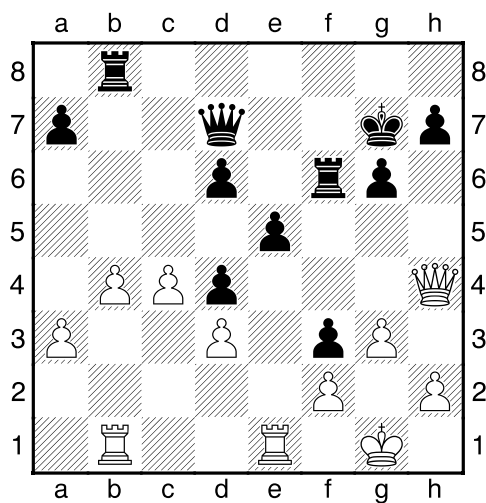
20...f5 21.exd4 cxd4 22.Dc1 f4 [Zwart krijgt meer ruimte.]

23.De1 f3 [Diagram



24.De4 Dd7 25.Dh4 [De veiligheid van de zwarte koning is verslechterd]

25...Tf6 26.Tfe1 [Diagram



]

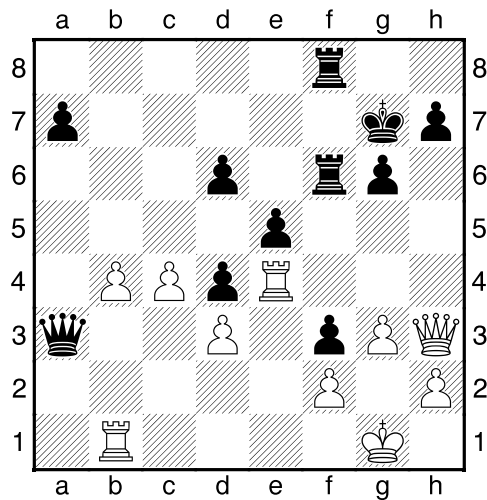
26...Tbf8 [26...Df5 27.Te4³]

27.Te4 [27.c5!?=]

27...Da4³ [Zwart dreigt met materiaalwinst: Da4xa3]

28.Dh3 [28.c5 Dxa3 29.cxd6 Dxd3³]

28...Dxa3 μ [Diagram]

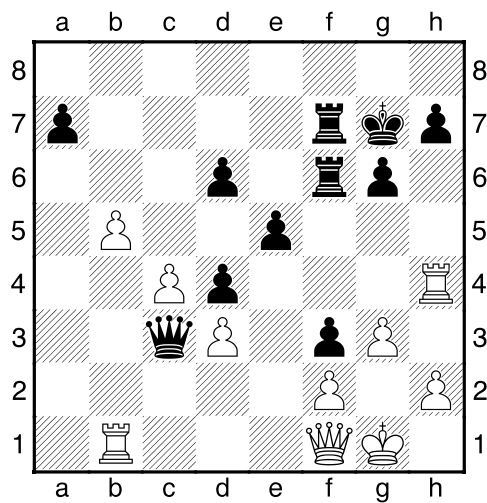


]

29.Df1 T8f7 30.Th4 [130.Dd1 μ]

30...Dc3 [30...a6 31.b5 axb5 32.Txb5 μ]

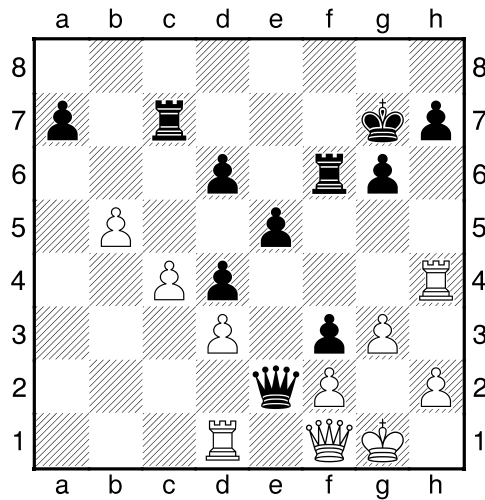
31.b5 [Diagram]



Wit wint ruimte.]

[31.Dd1 Da3 32.Df1 μ]

31...Tc7 32.Tc1 Dd2 33.Td1 De2 [Diagram



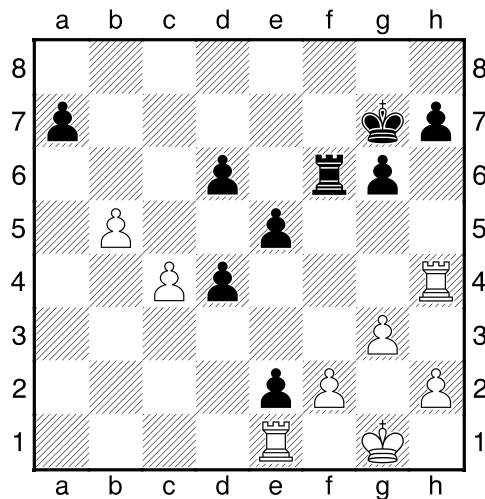
]

34.Dxe2? [!34.Te4 Dxf1+ 35.Txf1μ]

34...fxe2--+ 35.Te1 Txc4?? [Hierna keren de kansen.]

[!35...Tf3 Zou het leven van zwart veel gemakkelijker hebben gemaakt. 36.Te4 Txd3--+]

36.dxc4² [Diagram



]

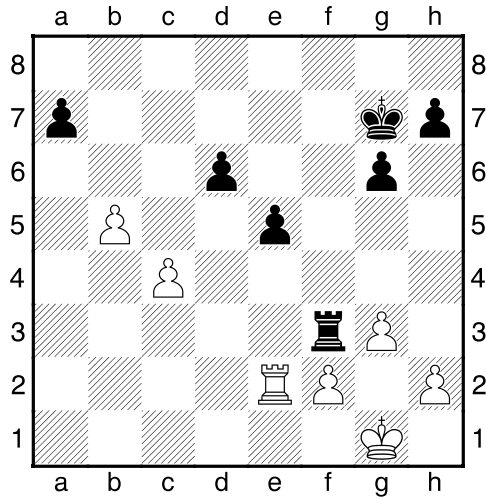
36...d3 [Wint via de voorbijgelaten pion.]

37.Txe2 [37.Te4!? d2 38.T4xe2 dxe1D+ 39.Txe1²]

37...dxe2= [Black has a mate threat]

38.Te4 [Wit dreigt met materiaalwinst: Te4xe2]

38...Tf3 39.Txe2 [Diagram



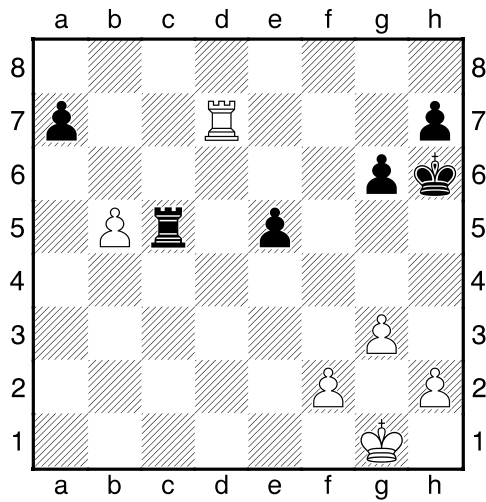
]

39...Tc3 [Zwart dreigt met materiaalwinst: Tc3xc4]

40.Td2 [Wit dreigt met materiaalwinst: Td2xd6]

40...Txc4 41.Txd6 Tc5 [Zwart dreigt met materiaalwinst: Tc5xb5]

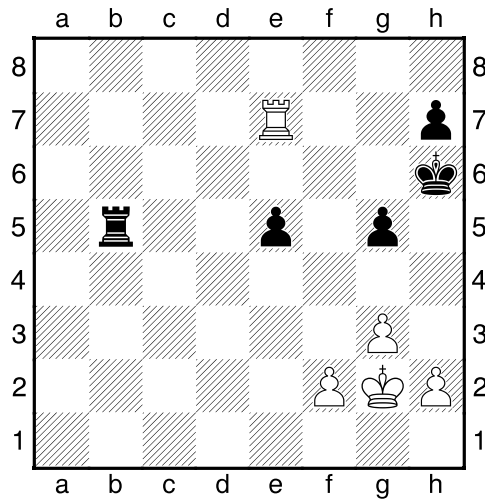
42.Td7+ Kh6 [Diagram



]

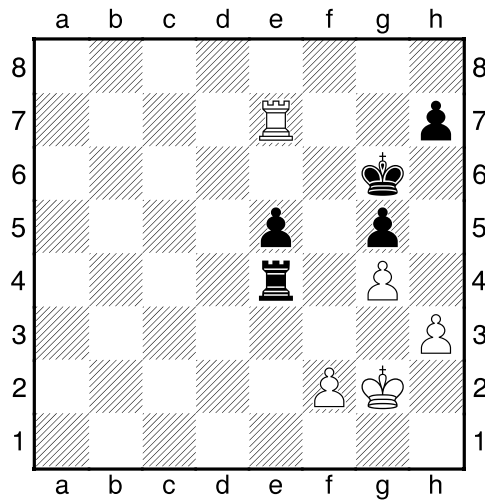
43.Txa7 Txb5 44.Te7 [44.h4 g5]

44...g5= 45.Kg2 [Diagram



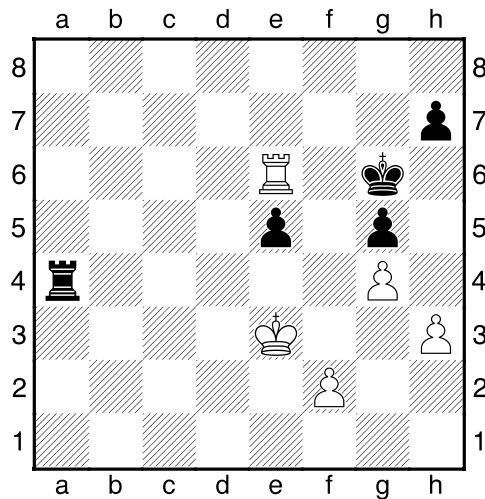
45...Kg6 46.g4 [Wit heeft een nieuwe achtergelegen pion: f2]

46...Tb4 47.h3 Te4 [Diagram]



48.Kf3 [Wit dreigt met materiaalwinst: Kf3xe4]

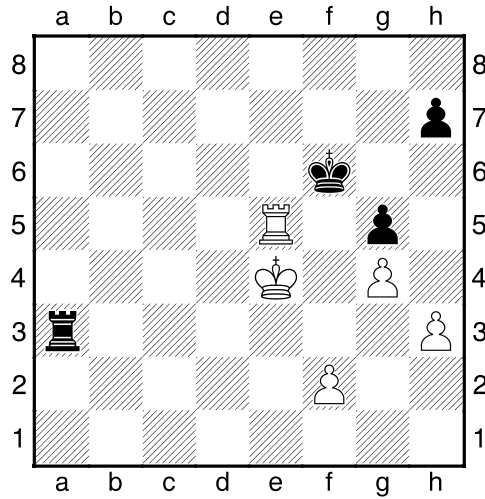
48...Tf4+ 49.Ke3 Ta4 50.Te6+ [Diagram]



50...Kf7 [Zwart dreigt met materiaalwinst: Kf7xe6]

51.Txe5 Ta3+ 52.Ke4 [52.Ke2 Kg6²]

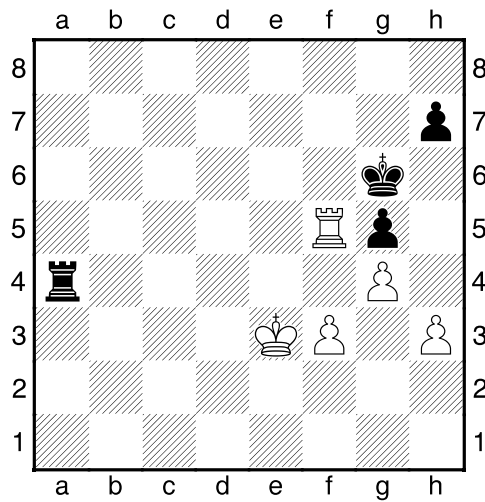
52...Kf6= [Diagram



]

53.Tf5+ [De witte toren houdt een mooie plaats bezet.]

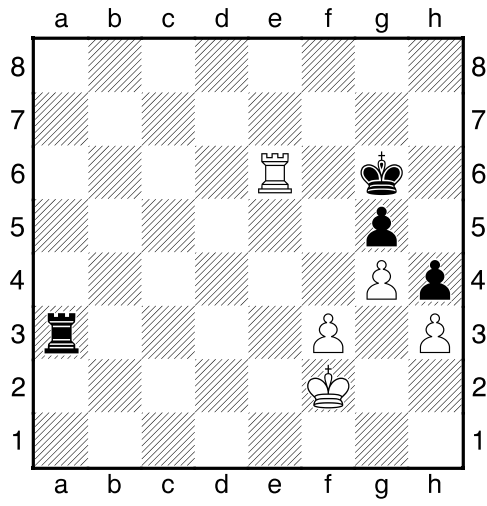
53...Kg6 54.f3 Ta4+ 55.Ke3 [Diagram



]

55...Ta3+ 56.Kf2 h5 57.Te5 h4 [Zwart wint ruimte.]

58.Te6+ [Diagram



]

$\frac{1}{2}-\frac{1}{2}$