

(1) Theo,Verstappen - Erwin ,Fleischmann [A21]

Intern GESS KaLe beker, 18.10.2015

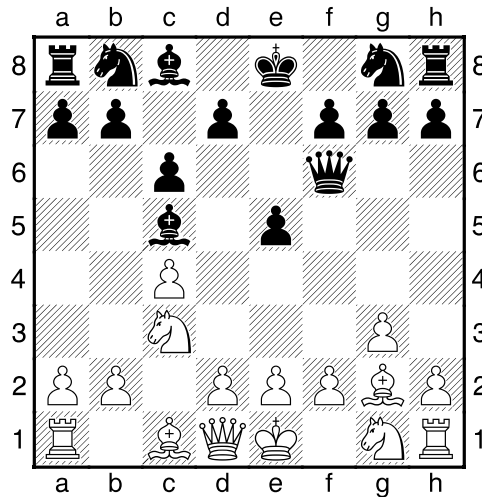
[Deep Fritz 14 x64 (20m)]

[A21: Engelse Opening: 1...e5 2 Pc3]

1.c4 e5 2.Pc3 Lc5 3.g3 [laatste zet uit boek]

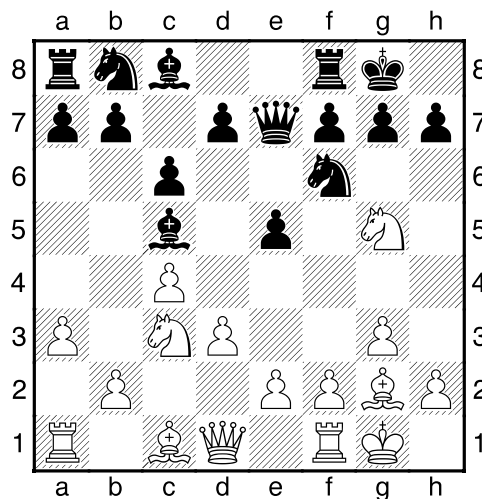
3...c6 [Dekt b5+d5]

4.Lg2 Df6 [Diagram]



[4...Pf6!?= Is de kritieke voortzetting.]

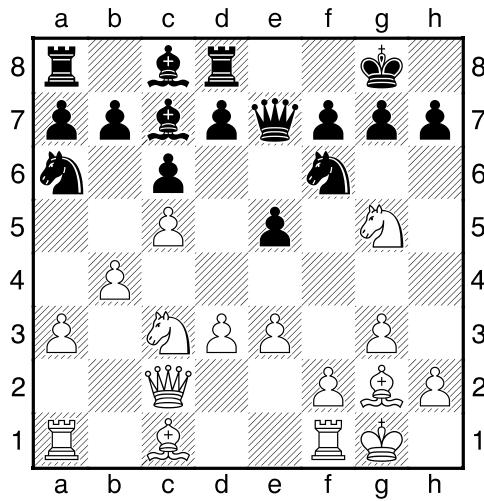
5.Pf3 De6 6.d3 Pf6 7.0-0 0-0 8.Pg5 De7 9.a3 [Diagram]



[Controleert b4]

9...Pa6 10.e3 [Zekert d4]

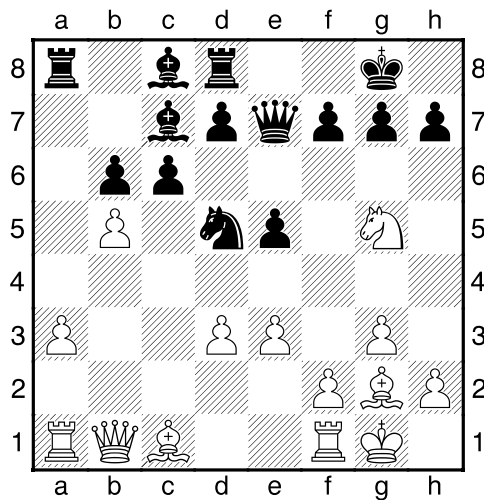
10...Td8 11.b4 Lb6 12.c5 Lc7 13.Dc2 [Diagram]



13...b6 [13...d6 14.cxd6 Dxd6 15.Td1=]

14.cxb6 [14.d4!?±]

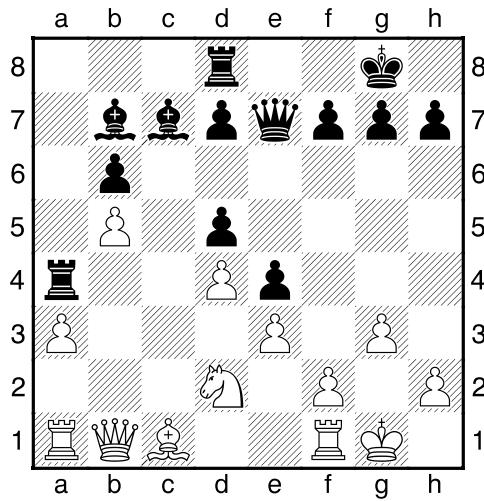
14...axb6= 15.b5 Pb4 16.Db1 Pbd5 17.Pxd5 Pxd5 [Diagram]



18.Lxd5 [18.Pe4 Lb7=]

18...cxd5³ [Zwart heeft een looperpaar.]

19.Pf3 Lb7 20.d4 e4 21.Pd2 Ta4?? [Diagram]



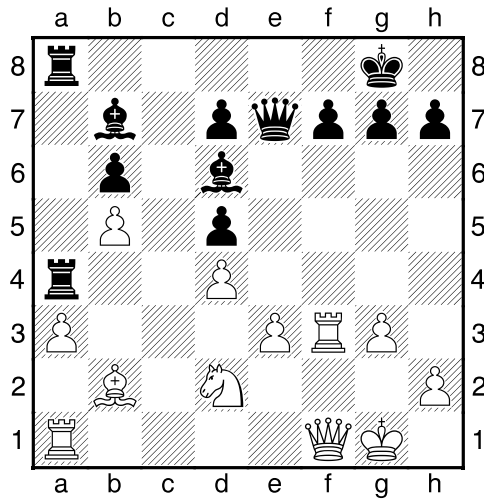
[Geeft de tegenstander nieuwe kansen.]

[21...De6 22.a4]

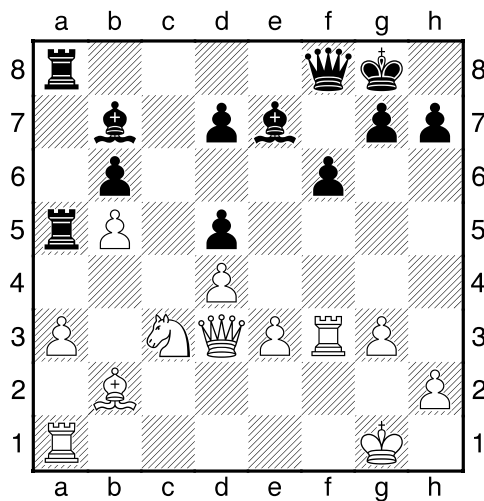
22.f3?? [Geeft de winst uit handen.]

[22.Dc2 Dit zou groot voordeel voor wit hebben opgeleverd. 22...Tc4 23.Pxc4 dxc4 24.Dxc4+--]

22...exf3 23.Txf3 Tda8 24.Lb2 Ld6 25.Df1 [Diagram]

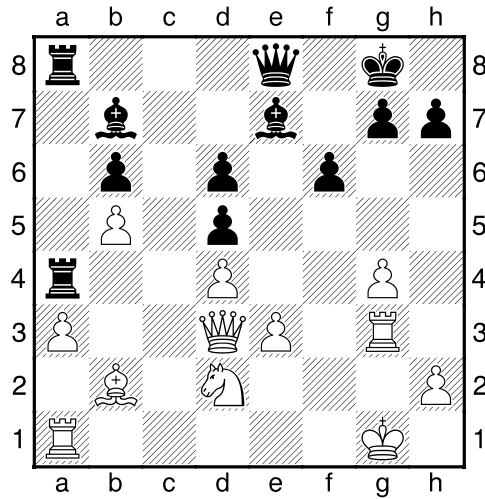


25...f6 26.Pb1 De8 27.Dd3 Dc8 28.Pd2 Df8 29.Pb1 Le7 30.Pc3 T4a5 [Diagram]



31.Pb1 Dc8 32.Pd2 Ta4 33.g4 d6 [33...De8 34.Pb1]

34.Tg3 De8 [Diagram]



35.Pf3? [135.Pb1!?? Vraagt om nadere analyse.]

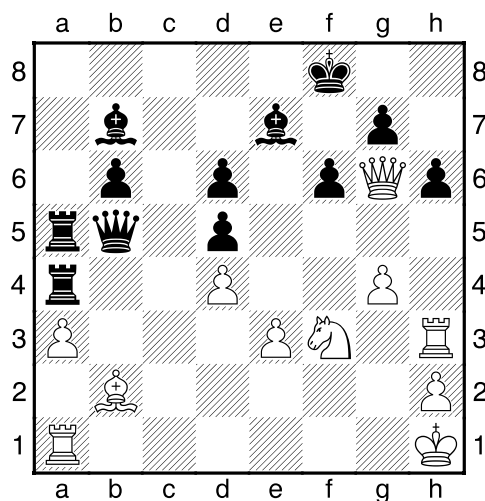
35...T8a5 36.Th3 h6 37.Kh1 [37.Dd1-+]

37...Dxb5?? [Hierna keren de kansen.]

[137...Txb5 Nu komt zwart in het voordeel. 38.Lc1 Tc4-+]

38.Dg6³ [Verliest materiaal]

38...Kf8?? [Diagram]



[Nu is de tegenstander weer terug in het spel.]

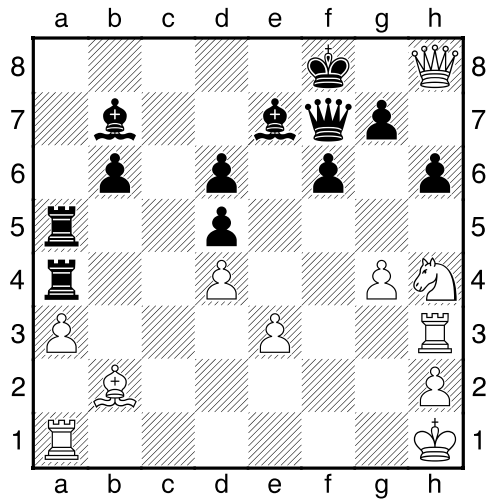
[38...Dxb2 39.Tb1 Dxb1+ 40.Dxb1 Txa3 41.Kg2]

39.Ph4 [139.Pg5! fxg5 40.Tf3+ Lf6 41.Taf1 Dxf1+ 42.Txf1±]

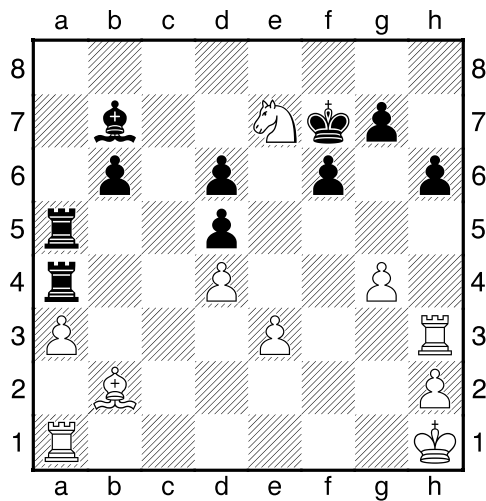
39...De8 40.Dh7 Df7?? [Er waren betere middelen om de druk vast te houden.]

[40...Lc8= Had de partij gereed.]

41.Dh8+- [Diagram]



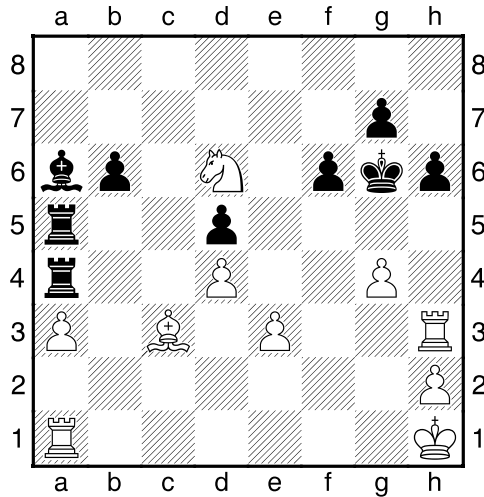
41...Dg8 42.Pg6+ Kf7 43.Dxg8+ Kxg8 44.Pxe7+ Kf7 [Diagram]



[44...Kf8 45.Pf5 Lc8 46.Td1+-]

45.Pf5 Kg6 46.Pxd6 La6 [46...La8+- Dit lost niets op.]

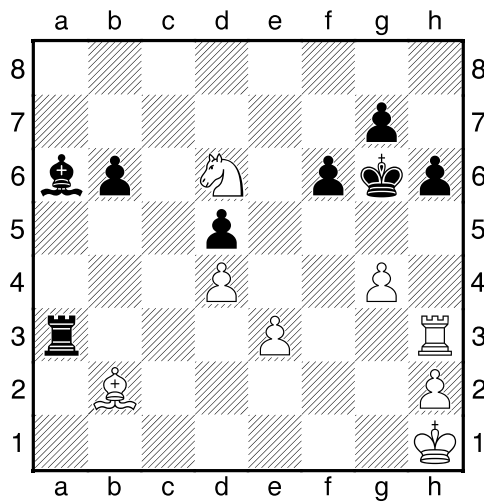
47.Lc3 [Diagram]



[47.Tc1 Stelt de winst veilig. 47...Ld3 48.Th5+]

47...Txa3± 48.Txa3 [48.Tc1!? T5a4 49.Kg2±]

48...Txa3 49.Lb2?? [Diagram]



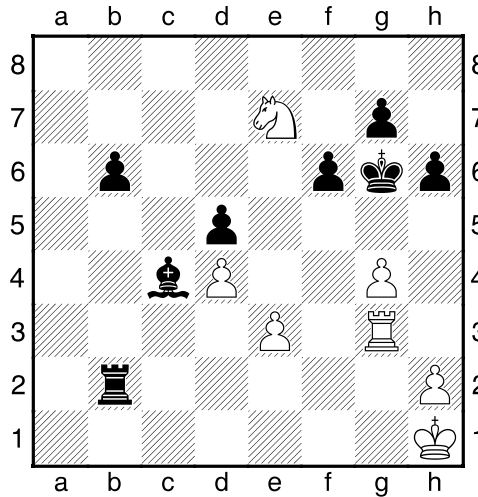
[Geeft het voordeel weg.]

[49.e4 dxe4 50.d5±]

49...Tb3+ 50.Tg3 [50.Lc1 Tb1 51.Kg2 Txc1+]

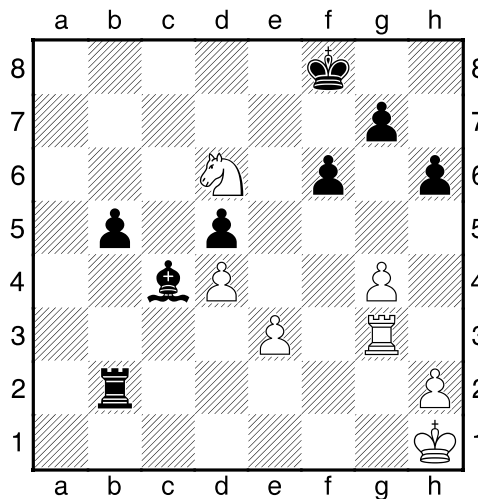
50...Txb2 51.Pf5 [51.Tg2 Tb1+ 52.Tg1 Txb1+ 53.Kxg1 Kg5+]

51...Lc4 52.Pe7+ [Diagram]



[52.Ph4+ Kf7 53.Tg2-+]

52...Kf7 53.Pf5 b5 54.Pd6+ Kf8 [Diagram



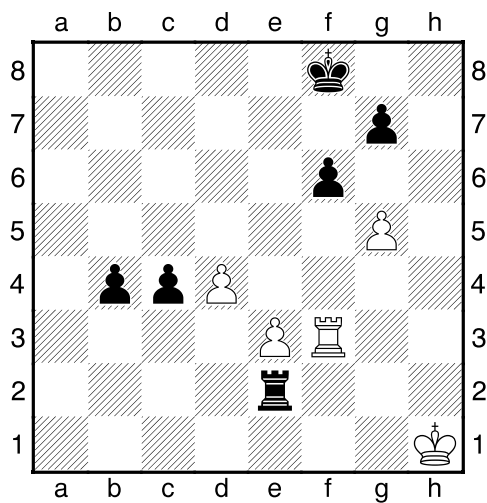
55.Pxc4 [55.e4 Anders kunnen de stukken meteen in de doos. 55...b4 56.e5 fxe5 57.Tf3+ Kg8 58.g5-+]

55...dxc4 56.h4 [56.Tg1 Een vruchteloze poging om het lot te ontlopen. 56...b4 57.Tc1 b3 58.Txc4 Tc2-+]

56...Te2 [56...c3 En zwart heeft zijn doel bereikt. 57.e4 c2 58.Tc3-+]

57.Tf3 [57.Tg1 De laatste tegenkans. 57...b4 58.Tc1-+]

57...b4 58.g5 hxg5 59.hxg5 [Diagram]



59...Kf7 [59...c3 En wit kan direct opgeven. 60.gxf6 Te1+ 61.Kg2-+]

60.Kg1 [60.Tf5 Biedt nog een hele kleine kans. 60...b3 61.Tb5-+]

60...b3 61.Tf1

0-1