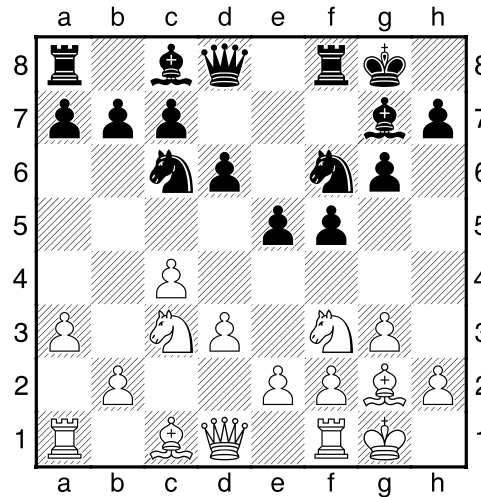


**(52) Theo, Vesrtappen - Gilbert, Leentjes [A26]**

Intern GESS, 13.03.2017  
[Deep Fritz 14 x64 (15m)]

[A26: Engelse Opening vs Konings-Indisch met ...Pc6 en d3]

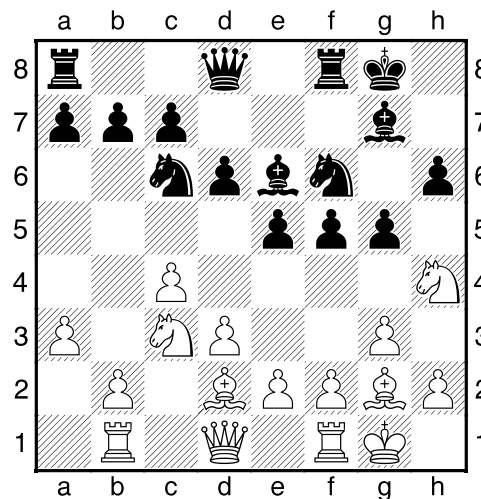
1.c4 e5 2.Pc3 Pc6 3.g3 g6 4.Lg2 Lg7 5.d3 d6 6.Pf3 f5 7.0-0 Pf6 8.a3 0-0 [Diagram



laatste zet uit boek]

9.Tb1 h6 [Controleert g5]

10.Ld2 Le6 11.Ph4 g5 [Diagram



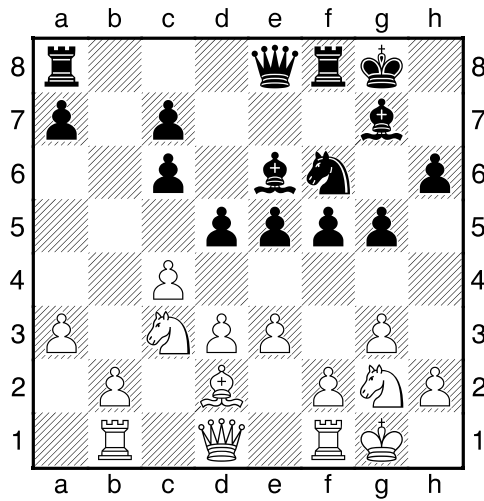
]

12.Lxc6 [12.Pf3 e4 13.Pe1 Dd7=]

12...bxc6<sup>3</sup> [Zwart heeft een loperpaar]

13.Pg2 De8 14.e3 [14.b4 f4<sup>3</sup>]

14...d5 [Diagram



zwart heeft e4 in de planning opgenomen.]

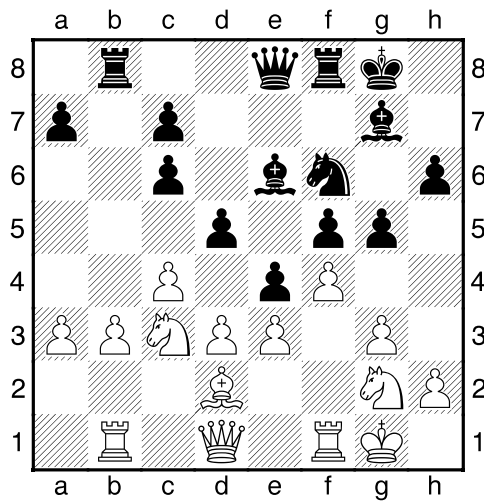
[14...e4 15.De2μ]

**15.b3** [15.cxd5 cxd5 16.Pa4 Lf7<sup>3</sup>]

**15...Tb8** [15...dxc4 16.dxc4 De7 17.Dc2<sup>3</sup>]

**16.f4** [16.Pa4 Df7=]

**16...e4** [Diagram



]

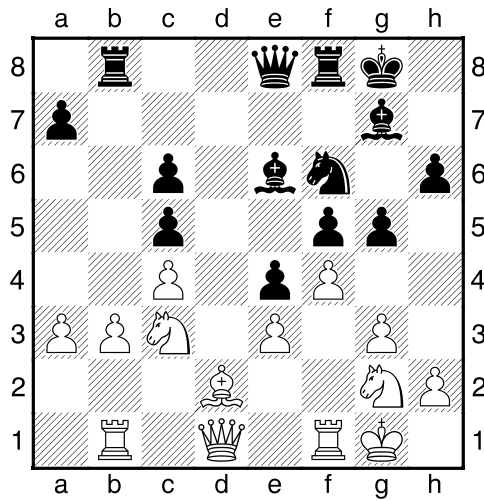
**17.dxe4** [17.cxd5 cxd5 18.d4 Ld7=]

**17...dxe4** [17...fxe4 18.h4 Lg4 19.De1μ]

**18.Pe2** [18.Pa4 Df7=]

**18...c5<sup>3</sup>** [Wit's positie is in het nauw]

**19.Pc3 c6** [Diagram

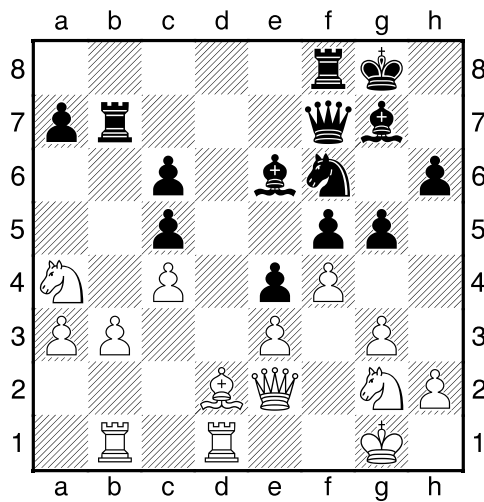


Dekt b5+d5]

[19...De7 20.Dc3]

**20.De2** [20.Pa4 De7=]

**20...Df7<sup>3</sup> 21.Tfd1 Tb7 22.Pa4?** [Diagram



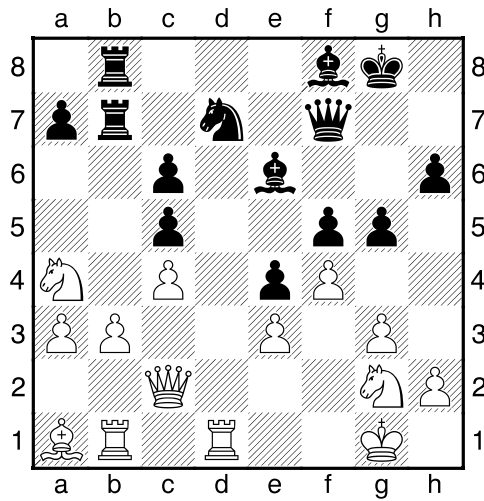
]

[22.Le1μ]

**22...Pd7??** [Geeft het voordeel weg.]

[!22...Txb3! Met zeer goede kansen voor zwart. 23.Tbc1 Pd7-+]

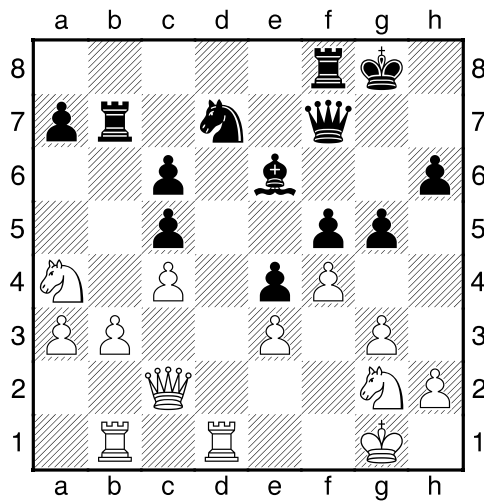
**23.Lc3= Tfb8 24.Dc2 Lf8 25.La1** [Diagram



]

25...Pf6 [25...Dh5!?=]

26.Le5<sup>2</sup> Tc8 27.Ld6 Pd7 28.Lxf8 Txf8 [Diagram



]

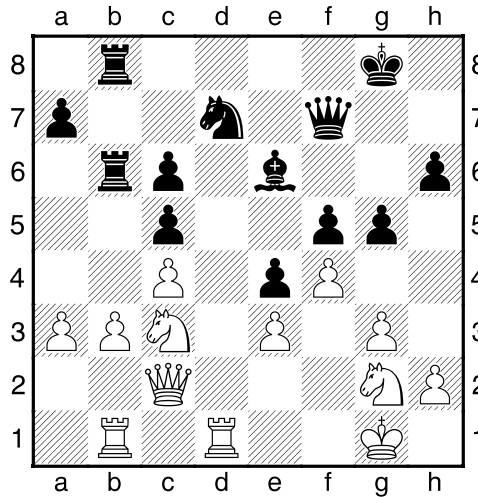
[28...Dxf8!? Komt in aanmerking. 29.h4 gxf4 30.Pxf4 Lf7=]

29.Td6± [Wit dreigt met materiaalwinst: Td6xc6]

29...Tfb8 30.Pc3 [30.Tb2 Tc7±]

30...Tb6 [30...Tc7 31.h3=]

31.Tdd1 [Diagram



]

[<sup>1</sup>31.h4<sup>2</sup>]

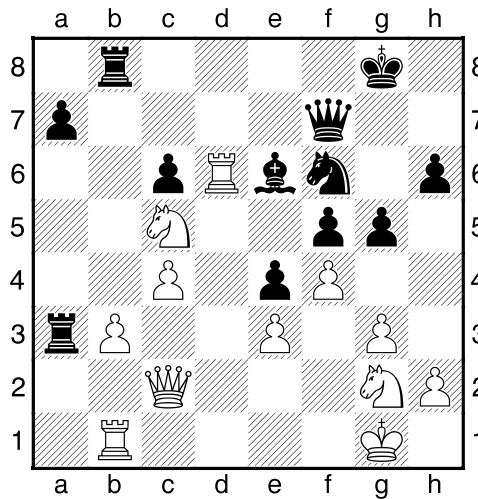
**31...Pf6??** [Er waren betere middelen om de druk vast te houden.]

[<sup>1</sup>31...De7= En zwart haalt alles uit de kast.]

**32.Pa4+- Ta6** [32...De7 33.Pxb6 axb6 34.a4+-]

**33.Pxc5 Txa3** [33...Ta5 34.b4 Txa3 35.Db2+-]

**34.Td6** [Diagram



]

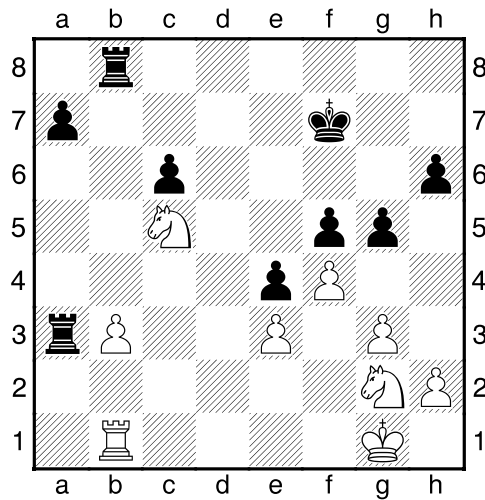
**34...Lxc4** [34...Te8 Brengt geen verlichting. 35.Db2 Ta5 36.Txc6+-]

**35.Txf6** [<sup>1</sup>35.bxc4 Is nauwkeuriger. 35...Txb1+ 36.Dxb1+-]

**35...Dxf6 36.Dxc4+** [36.Pd7! De6 37.Pxb8 Txb3 38.Txb3 Lxb3 39.Dxc6 a5+-]

**36...Df7± 37.Dxf7+** [<sup>1</sup>37.Pe6±]

37...Kxf7= [Diagram



]

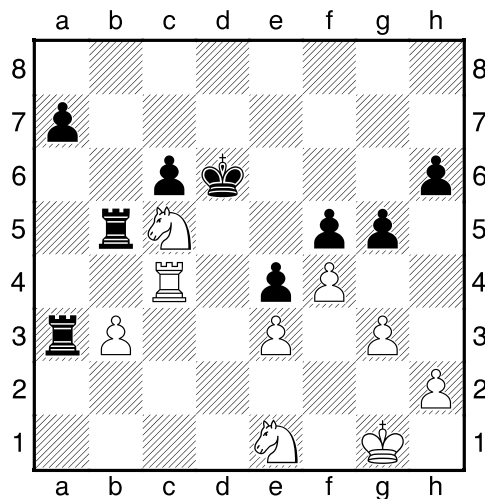
38.Pe1 [38.fxg5!? Tb5 39.Tc1 hxg5 40.h4 gxh4 41.gxh4=]

38...Tb5<sup>3</sup> [Zwart dreigt met materiaalwinst: Tb5xc5]

39.Tc1 Ke7 [39...Tba5 40.Pb7 Ta1 41.Pxa5 Txc1 42.Kf2<sup>3</sup>]

40.Tc4 [40.Tc3 Ta1 41.Kf2 Ta2+ 42.Pc2 Kd6=]

40...Kd6 [Diagram



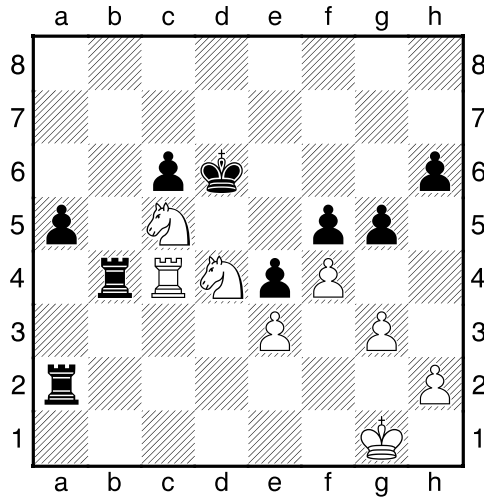
]

[40...Ta1!? Is een interessant alternatief. 41.Kf2 Ta2+ 42.Kg1 a5<sup>3</sup>]

41.Pc2= [Wit dreigt met materiaalwinst: Pc2xa3]

41...Ta2 42.b4 a5 43.Pd4 [<sup>1</sup>43.Pb3!? Houdt de strijd gaande. 43...Tb2 44.Pxa5=]

43...Txb4<sup>μ</sup> [Diagram



]

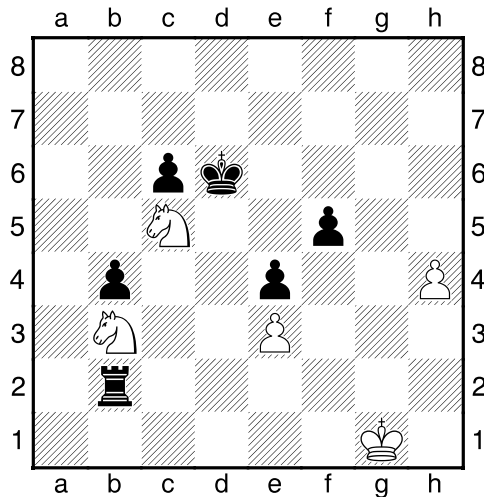
**44.Txb4??** [En het gaat verder bergafwaarts.]

[<sup>1</sup>44.Pxf5+ Kd5 45.Tc1μ]

**44...axb4--+ 45.Pdb3** [45.fxg5 Is niet de reddende zet. 45...hxg5 46.Pdb3 Tc2--+]

**45...Tb2** [<sup>1</sup>45...gxf4 Lijkt nog beter. 46.gxf4 Tb2 47.Pb7+ Kd5 48.P3c5--+]

**46.fxg5 hxg5 47.h4 gxh4 48.gxh4** [Diagram



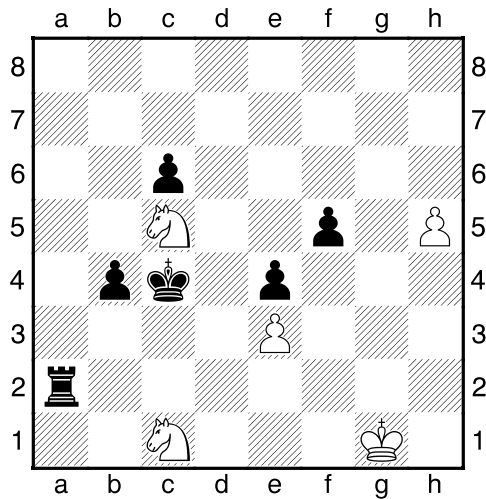
]

**48...Ke5** [48...Te2 Dit maakt het voor zwart nog eenvoudiger. 49.Pd4 Ta2 50.Pdb3--+]

**49.Pd4** [49.h5 Kf6 50.Pd4 Tb1+ 51.Kf2 Tc1 52.Pd7+ Kg5--+]

**49...Kd5 50.Pdb3** [50.Pd7 Tb1+ 51.Kf2--+]

**50...Kc4 51.h5 Ta2 52.Pc1** [Diagram



]

**52...Ta1** [52...Ta7!? Levert nog groter voordeel op. 53.P5b3 c5 54.Kg2-+]

**53.P5b3 Ta8 54.Pd4** [54.Kf2 Dit verbetert nauwelijks iets aan de stelling. 54...Th8-+]

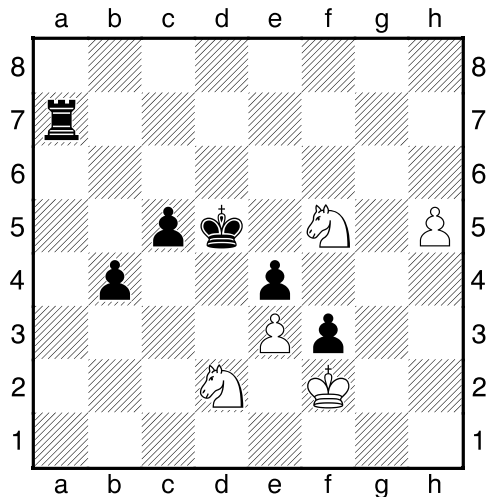
**54...f4!** [Deflectie: d4]

**55.Kf2** [55.exf4 Kxd4 Deflectie; ...55.-- fxe3 Wins material]

**55...f3 56.Pcb3** [56.h6 De laatste stuiptrekkingen. 56...Th8 57.Pxc6 Txxh6 58.Pa5+ Kd5 59.Pab3-+]

**56...c5 57.Pd2+ Kd5 58.Pf5** [58.Pe6 Dit kan de uitslag niet meer beïnvloeden. 58...Kxe6 59.Pxe4 c4 60.Kxf3 Th8-+]

**58...Ta7** [Diagram



]

[58...Ta2 Geeft wit geen enkele kans. 59.Ke1 f2+ 60.Kxf2 Txd2+ 61.Ke1-+]

**59.h6** [59.Pg3 c4 60.Pdxe4 c3 61.Pxc3+ bxc3 62.Kxf3 c2-+]

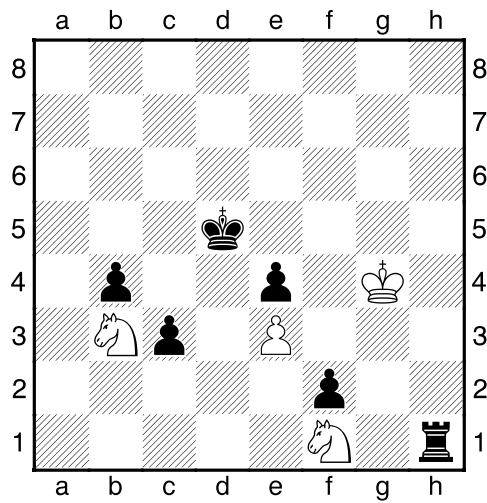
**59...Th7** [59...c4 Geeft de tegenstander geen kans. 60.Kf1-+]



60.Kg3 [60.Pg3→ De laatste tegenkans.]

60...c4 61.Kg4 [61.Kf4 De laatste strohalm. 61...f2 62.Kg3→]

61...c3 62.Pb3 f2 63.Pg3 Txh6 64.Pf1 Th1 [Diagram



]

[64...Th1 65.Pd4 Txf1 66.Kg3 Td1 67.Kxf2 Txd4 68.exd4 c2 69.Kg3 b3 70.Kg4 b2 71.Kf5 b1T 72.Kg6 Tb6+ 73.Kf5 c1D 74.Kg4 Tg6+ 75.Kf5 Dg5#]

0-1