

(29) Theo,Verstappen - Gerard,in het Veld [A22]

Extern GESS tegen Venlo III, 01.02.2015

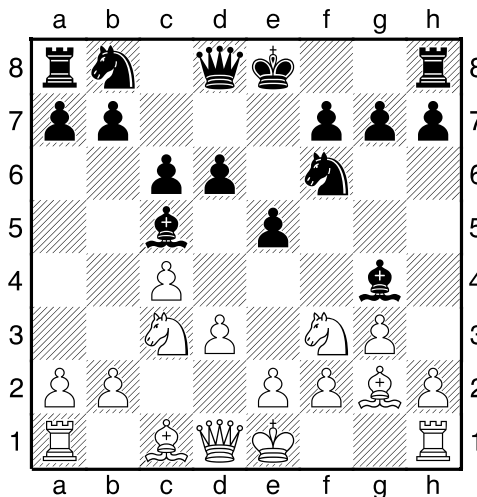
[Deep Fritz 14 x64 (15m)]

[A22: Engelse Opening: 1...e5 2 Pc3 Pf6]

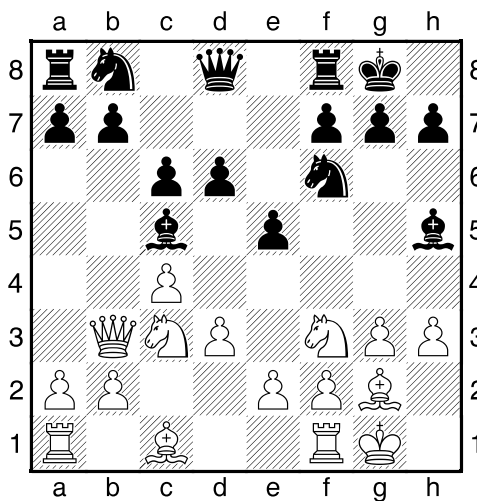
1.c4 e5 2.Pc3 Pf6 3.g3 Lc5 4.Lg2 d6 5.d3 [laatste zet uit boek]

5...c6 [Zekert b5+d5]

6.Pf3 Lg4 [Diagram]

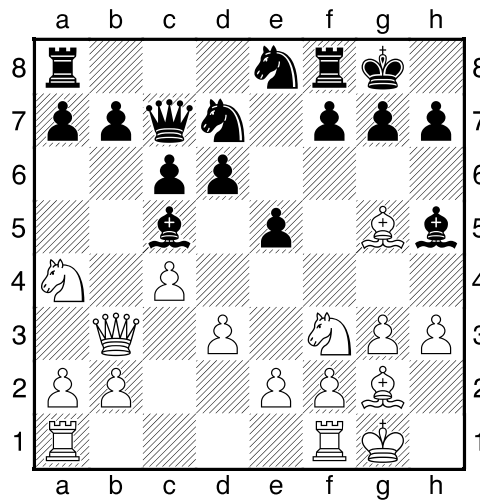


7.h3 Lh5 8.0-0 0-0 9.Db3 [Diagram]

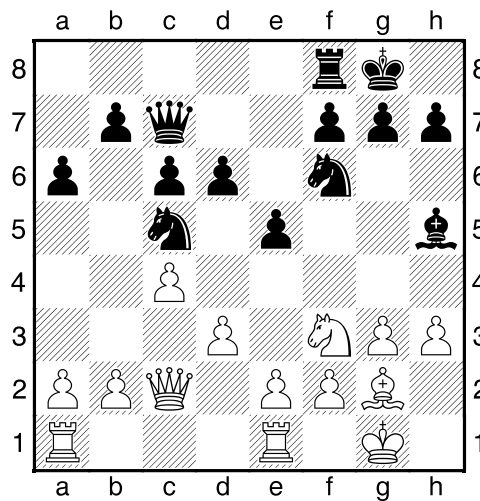


[Wit dreigt met materiaalwinst: Db3xb7]

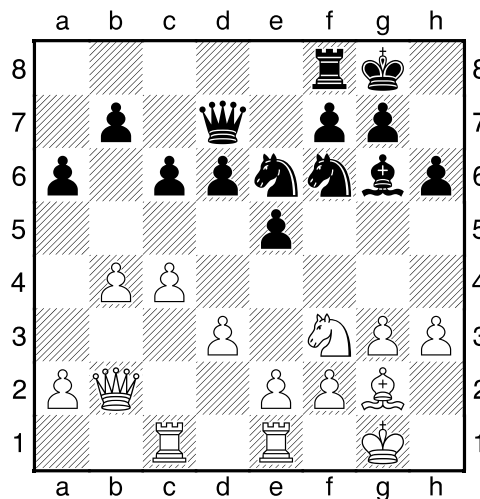
9...Dc7 10.Pa4 Pbd7 11.Lg5 Pe8 [Diagram]



[11...h6 En zwart kan nog vechten. 12.Lxf6 Lxf3 13.Lxf3 Pxf6 14.Pxc5 dxc5=]
 12.Le7± Pef6 13.Lxf8 Txf8 14.Tfe1 a6 15.Pxc5 Pxc5 16.Dc2 [Diagram]



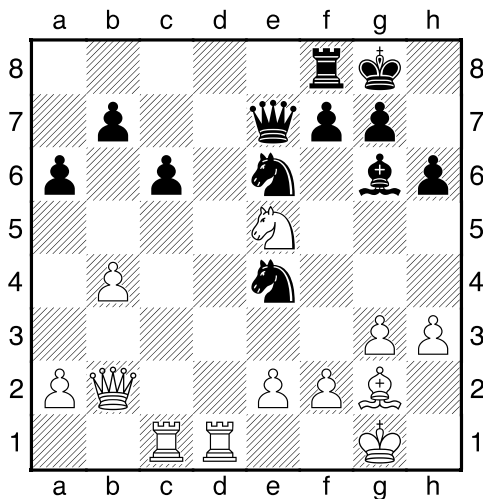
16...h6 [zwart heeft e4 in de planning opgenomen.]
 17.b4 Pe6 18.Tac1 Lg6 19.Db2 Dd7 [Diagram]



[19...Pd7 20.Pd2±]

20.c5 e4 21.dxe4 Pxe4 [21...Lxe4 22.cxd6 Dxd6±]

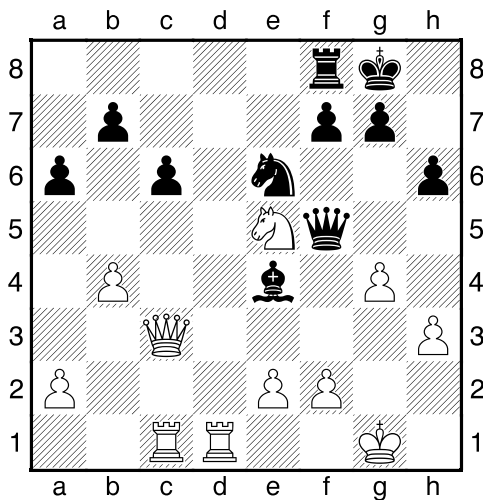
22.cxd6+- Dxd6 23.Ted1 De7 24.Pe5 [Diagram]



24...Df6 25.Lxe4 Lxe4 26.Dc3 [26.Pc4 Dxb2 27.Pxb2 Ld5+-]

26...Df5 [26...Pg5 27.f3 Ld5 28.h4±]

27.g4 [Diagram]



hier begint het helemaal fout te gaan voor wit een betere keuze was het opspelen van de f pion.]

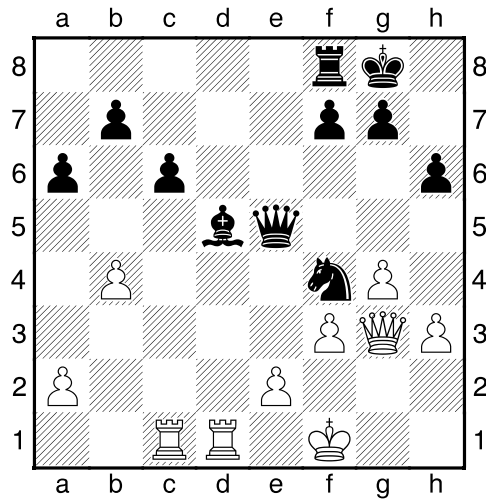
[¹27.f3!? Ld5 28.Pg4+-]

27...Dg5± 28.Dg3?? [De beslissende fout van wit]

[¹28.Pd7 Te8 29.Pc5 Pxc5 30.bxc5±]

28...Pf4+- 29.Kf1? [29.De3 Dxe5 30.Tc4+-]

29...Dxe5 30.f3 Ld5 [Diagram]



31.a3 [31.e4 Biedt nog een hele kleine kans. 31...Lxa2 32.Tc5→]

31...Dxe2+ 32.Kg1 Dxd1+! [En de partij is beslist wit geeft op]

[32...Dxd1+ 33.Txd1 Pe2+ 34.Kf2 Pxd3 35.Kxd3 f5→]

0-1