

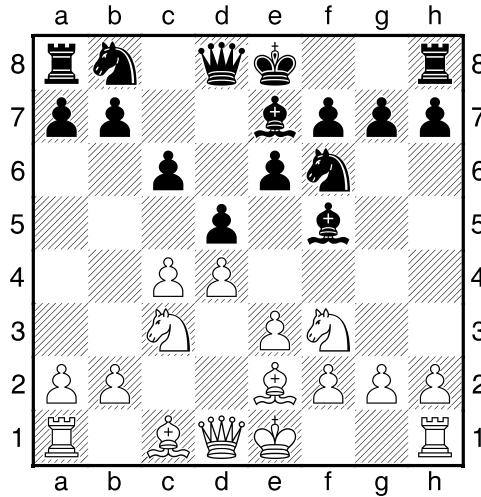
(18) Theo,Hanssen - Theo,Verstappen [D12]

Intern GESS, 02.05.2016
[Deep Fritz 14 x64 (15m)]

[D12: Slavische Verdediging: 3.Pf3 Pf6 4.e3 Lf5]

1.d4 d5 2.c4 c6 3.Pf3 Pf6 4.e3 Lf5 5.Pc3 e6 6.Le2 [laatste zet uit boek]

6...Le7 [Diagram



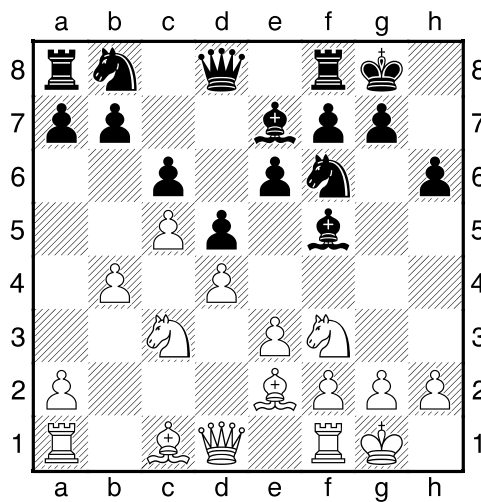
]

7.0-0 0-0 8.c5 [Met deze zet wordt meer ruimte gewonnen.]

[8.Ph4 dxc4 9.Pxf5 exf5 10.Lxc4 Pbd7=]

8...h6 [Dekt g5]

9.b4 [Diagram



]

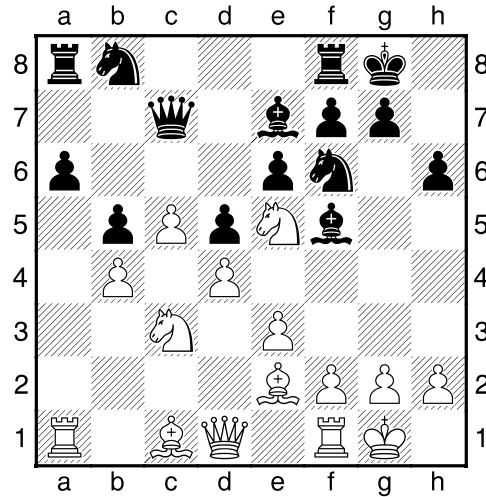
9...b5 [19...Dc7= En zwart haalt alles uit de kast.]

10.a4± a6 [10...bxa4 11.Dxa4 Dc8 12.Ld2±]

11.Pe5 [11.axb5 cxb5 12.Lxb5 Dc7+–]

11...Dc7? [11...Pfd7 12.Pd3 bxa4 13.Dxa4 Lf6±]

12.axb5+– cxb5 [Diagram



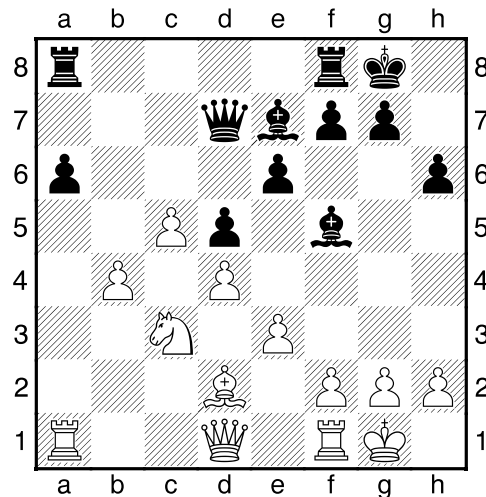
]

13.Lxb5! [Deflectie: a6]

13...Pbd7 [13...axb5 14.Txa8 Deflectie Penning]

14.Lxd7 [14.Pxd7!? axb5 15.Pxf6+ Lxf6 16.Pxb5 Db7+–]

14...Pxd7± 15.Pxd7 Dxd7 16.Ld2 [Diagram

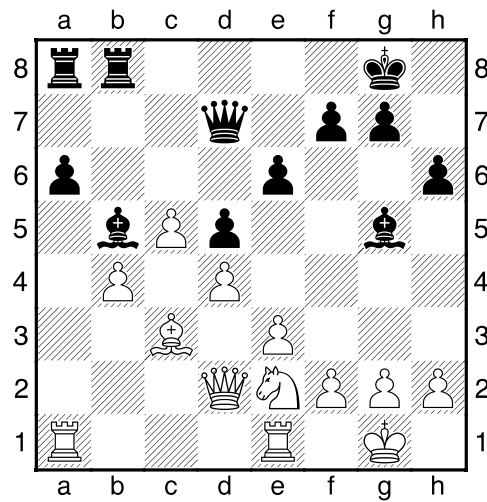


]

16...Tfb8 [16...Ld3 17.Pe2±]

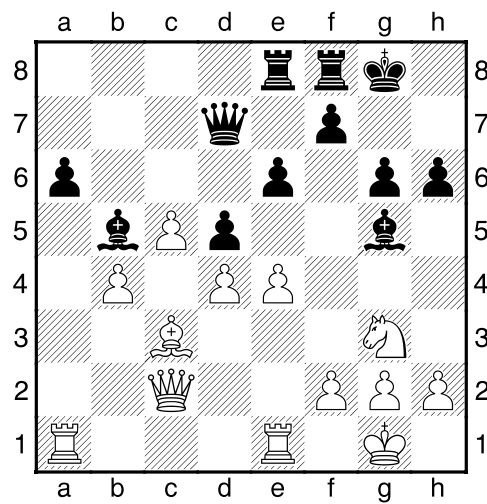
17.Pe2 [17.De2 Db7±]

17...Ld3 18.Lc3 Lb5 19.Te1 Lg5 20.Dd2 [Diagram



]

20...g6 21.Pg3 Tf8 22.Dc2 Tae8 23.e4 [Diagram



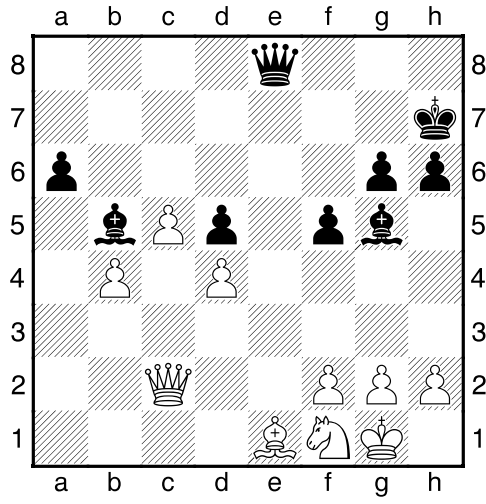
]

23...Kh7 24.exd5 exd5 25.Ph5 [!25.Pf1!?!±]

25...f5= 26.Pg3 Txe1+ 27.Txe1 Te8 [27...f4!?! Moet onderzocht worden. 28.Pe2 f3=]

28.Pf1 Txe1 [Black has a mate threat]

29.Lxe1 De8 [Diagram



]

$\frac{1}{2}-\frac{1}{2}$