

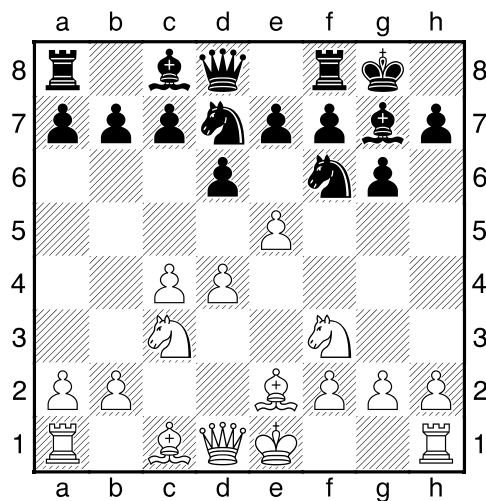
(36) Salo,Flohr - Piet,van Nassau [E91]

Simultaan Geleen, 04.01.1960

[Deep Fritz 14 x64 (15m)]

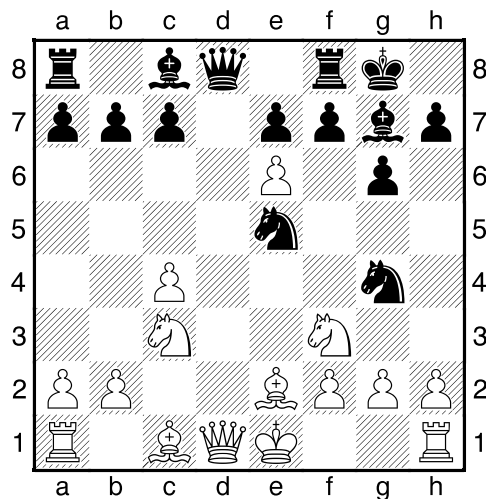
[E91: Konings-Indisch: Klassiek: 6 Le2, ongebruikelijke antwoorden inclusief 6...c5 en 6...Lg4]

1.c4 Pf6 2.Pc3 g6 3.e4 d6 4.d4 Lg7 5.Pf3 0-0 6.Le2 Pbd7 7.e5 [Diagram



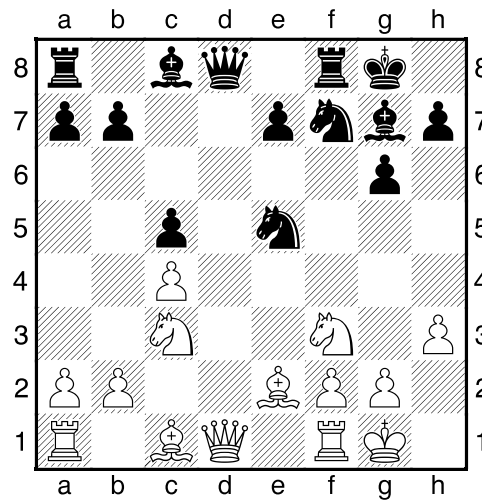
7...dxe5 8.dxe5 Pg4 9.e6 [laatste zet uit boek]

9...Pde5 [Diagram]

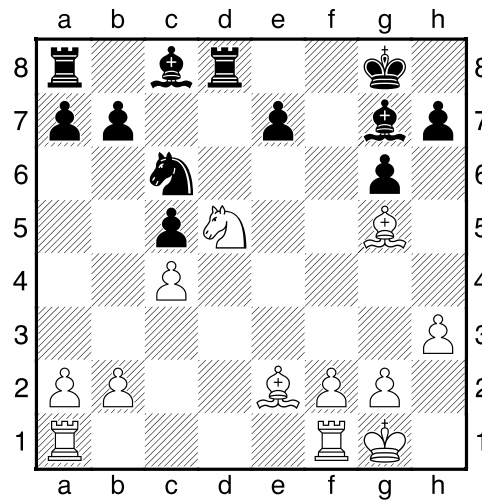


[9...fxe6 10.0-0 Pde5 11.c5=]

10.exf7+ Pxf7 11.0-0 c5 12.h3 Pge5 [Diagram]



13.Pxe5 Pxe5 14.Dxd8 Txd8 15.Pd5 Pc6 16.Lg5 [Diagram

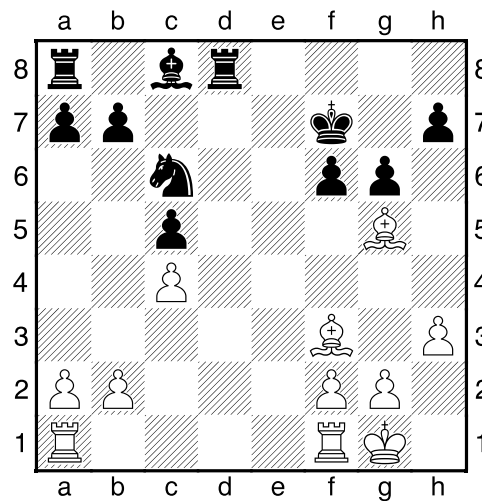


Wit dreigt met materiaalwinst: Lg5xe7]

16...Kf7 17.Lf3 Lf6 [17...h6 18.Lh4 Lf5 19.Pc7=]

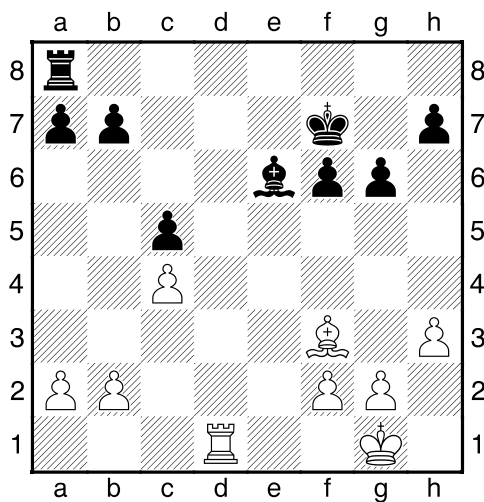
18.Pxf6 [18.Lxf6 exf6 19.Pc7 Tb8?]

18...exf6= [Diagram]



Wit heeft een loperpaar.]

19.Le3 Pd4 20.Lxd4 Txd4 21.Tad1 Txd1 22.Txd1 Le6 [Diagram]



Zwart dreigt met materiaalwinst: Le6xc4]

23.Lxb7 [23.b3!?! Is de kritieke voortzetting. 23...Tb8 24.g4=]

23...Tb8

1/2-1/2