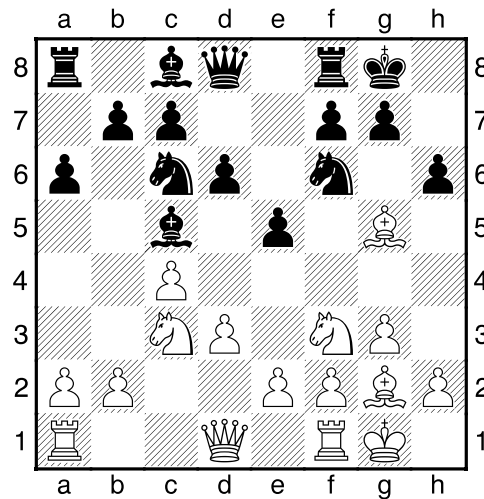


(2) Rene,Chapin - Theo,Verstappen [A29]

Intern GESS, 26.10.2015
[Deep Fritz 14 x64 (20m)]

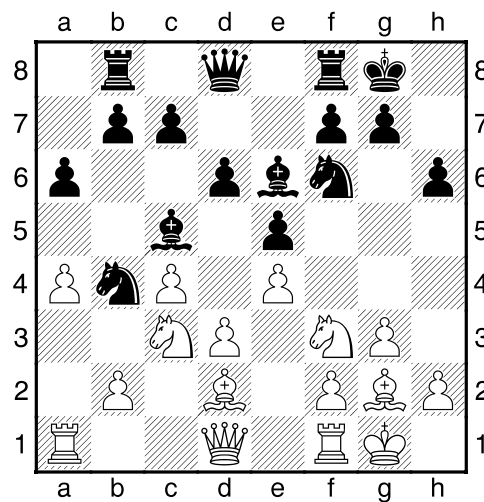
[A29: Engelse Opening: Vier Paarden Variant met 4 g3]

1.c4 e5 2.Pc3 Pf6 3.g3 Lc5 4.Lg2 Pc6 5.d3 0-0 6.Pf3 d6 7.0-0 a6 8.Lg5 h6 [Diagram]



[laatste zet uit boek]

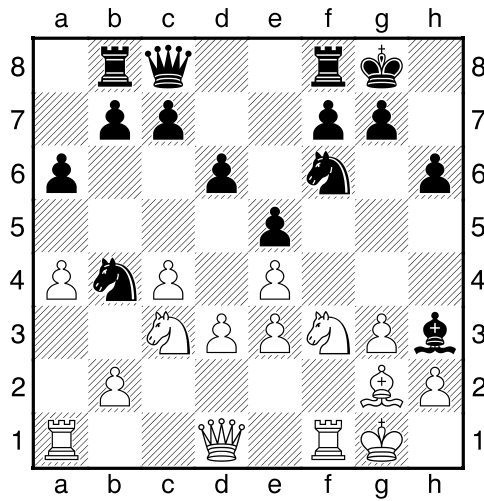
9.Ld2 Tb8 10.a4 Le6 11.e4 Pb4 [Diagram]



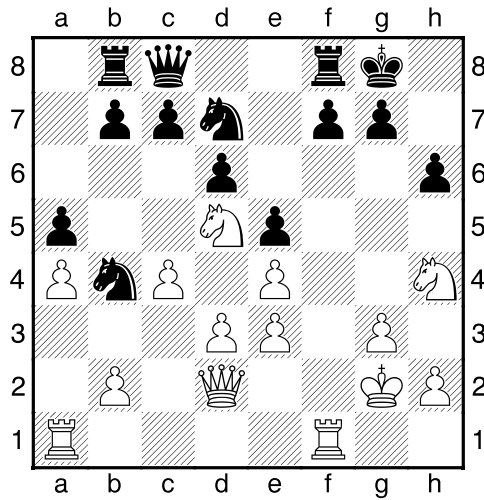
[Zwart dreigt met materiaalwinst: Pb4xd3]

12.Lc1 Dc8 13.Le3 Lxe3 14.fxe3 [Wit heeft dubbele pionnen: e3+e4]

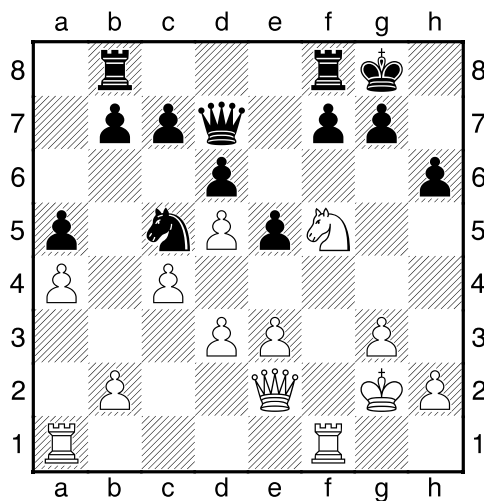
14...Lh3 [Diagram]



15.Dd2 Lxg2 16.Kxg2 a5 17.Ph4 Pd7 18.Pd5 [Diagram]



18...Pxd5 19.exd5 [Wit heeft een nieuwe dubbele pion: d3]
 19...Pc5 20.Pf5 Dd7 [20...Dd8 21.Dc2=]
 21.De2 [Diagram]



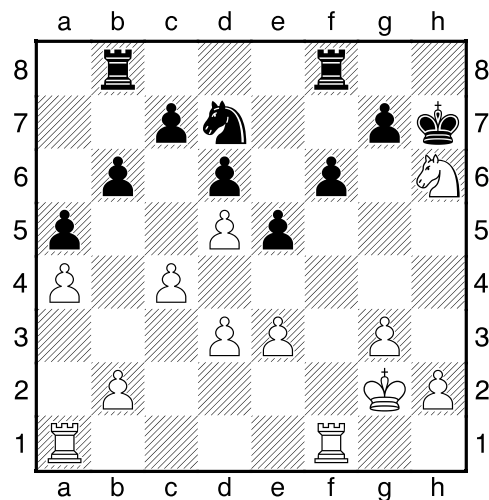
[21.d4 Pa6 22.Dxa5]

21...b6? [21...g6 En zwart kan nog vechten. 22.d4 exd4 23.exd4 Tbe8=]

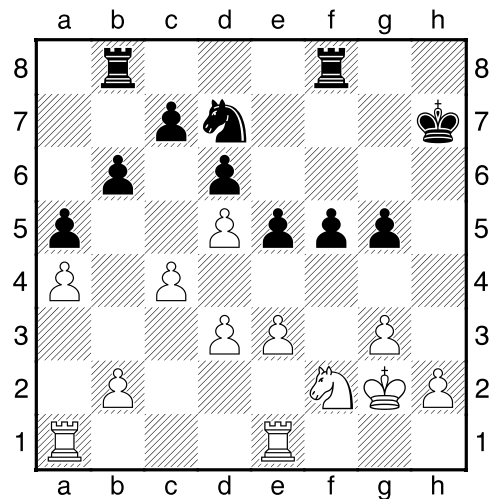
22.Dg4 f6 23.Pxh6+ [23.d4 h5 24.Dh3 De8 25.dxc5 bxc5+-]

23...Kh7± 24.Dxd7 [24.Pf5!? Df7 25.d4±]

24...Pxd7² [Diagram]



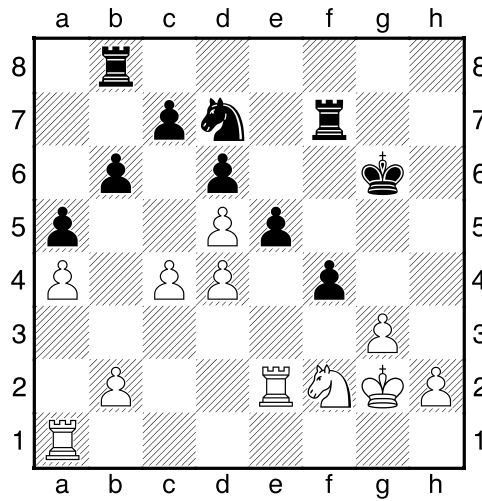
25.Pg4 f5 26.Pf2 g5 27.Tfe1 [Diagram]



[27.h4 gxh4 28.Th1 Kg6²]

27...Kg6= 28.Te2 Tf7 29.d4 f4 [29...Te8 30.Tae1=]

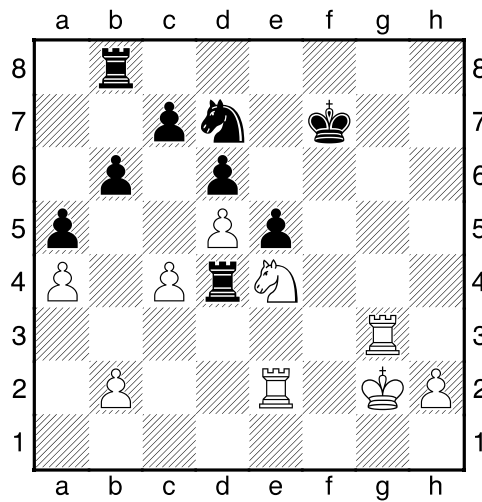
30.exf4² gxf4 [Diagram]



31.gxf4 [31.Ta3!±]

31...Txf4= 32.Ta3 Txd4 [Een erg actieve plek voor de zwarte toren.]

33.Tg3+ Kf7 34.Pe4 [Diagram]



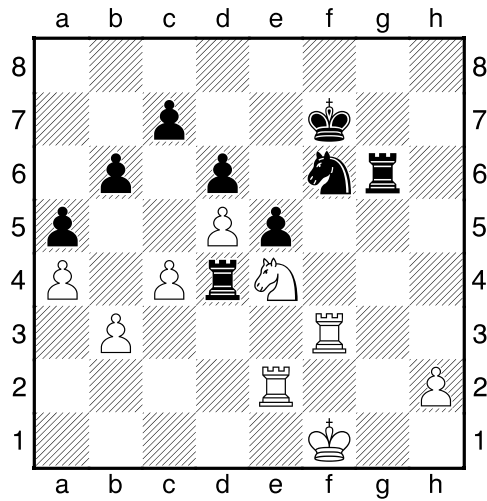
[Het paard staat daar goed op e4.]

34...Pf6 [Zwart dreigt met materiaalwinst: Pf6xe4]

35.Tf3 [Wit dreigt met materiaalwinst: Tf3xf6]

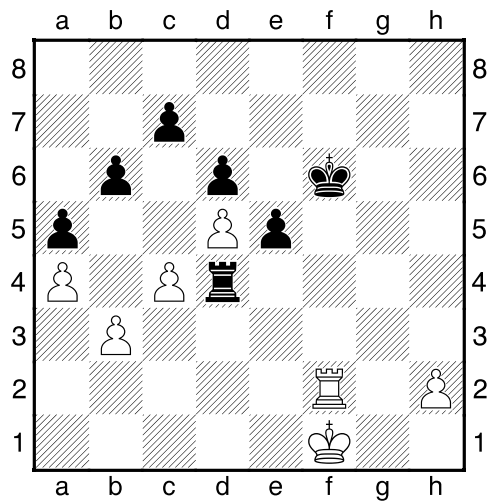
35...Tg8+ 36.Kf1 [36.Kf2 Tg6 37.b3 Ke7 38.Pxf6 Txf6 39.Txf6 Kxf6=]

36...Tg6³ 37.b3 [Diagram]

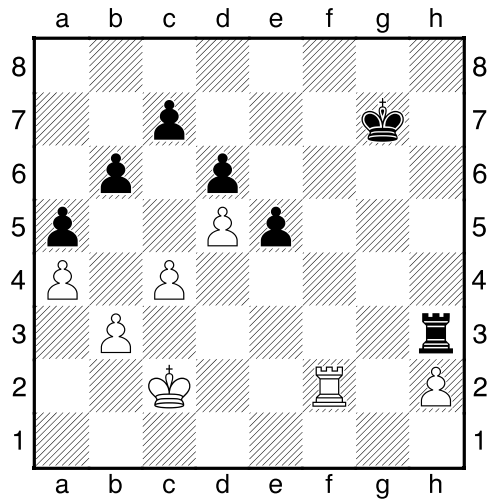


37...Ke7 38.Txf6 Txf6+ 39.Pxf6 Kxf6 [Een toren eindspel ontstaat]

40.Tf2+ [Diagram]



40...Kg7 41.Ke2 Th4 42.Kd3 Th3+ 43.Kc2 [Diagram]



43...Th4 44.Kd3 [Tweevoudige herhaling]

44...Th3+ 45.Kc2

$\frac{1}{2}-\frac{1}{2}$