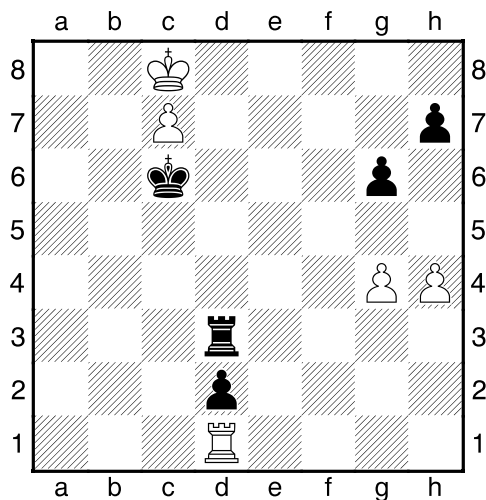


**(104) Pim,du Chatinier - Piet,van Nassau 17-2-2020**

GESS interne comp., 17.02.2020

[Deep Fritz 14 x64 (5m)]

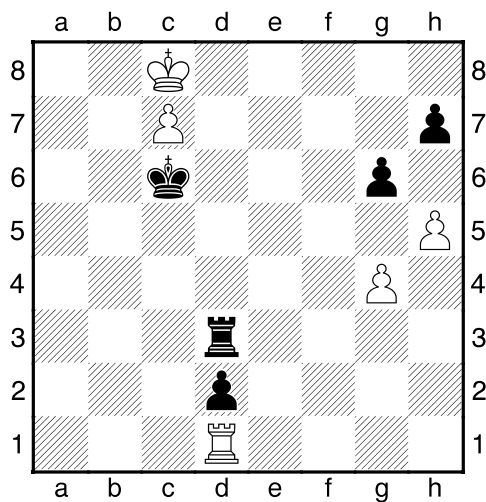
[Diagram



]

[Partij had als volgt verder kunnen gaan]

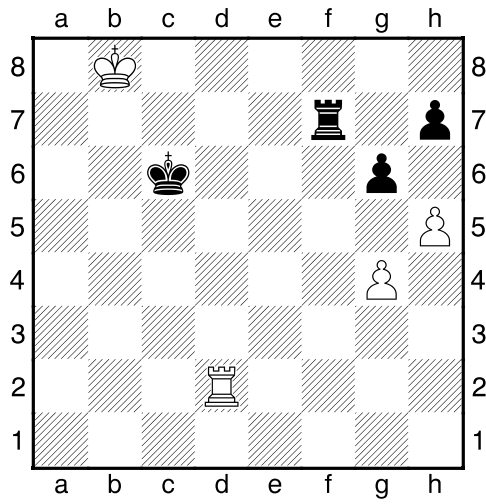
**1.Kb8 Tb3+ 2.Kc8 Td3 3.h5** [Diagram



Wit krijgt meer ruimte.]

**3...Td7** [Zwart dreigt met materiaalwinst: Td7xc7]

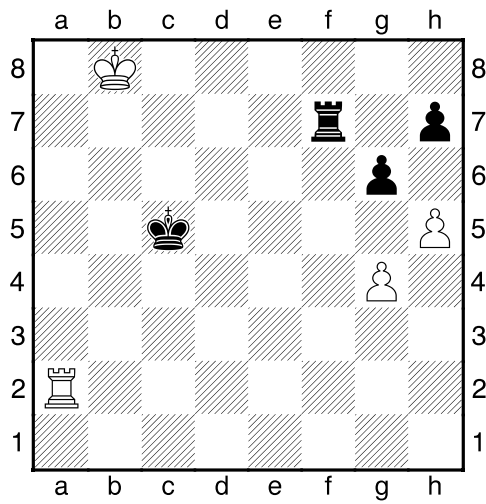
**4.Kb8 Txc7 5.Txd2 Tf7** [Diagram



]

**6.Ta2 Kb6** [Black has a mate threat]

**7.Tb2+ Kc5 8.Ta2** [Diagram



$\frac{1}{2}-\frac{1}{2}$