

(17) Piet,van Nassau - Theo,Verstappen [A06]

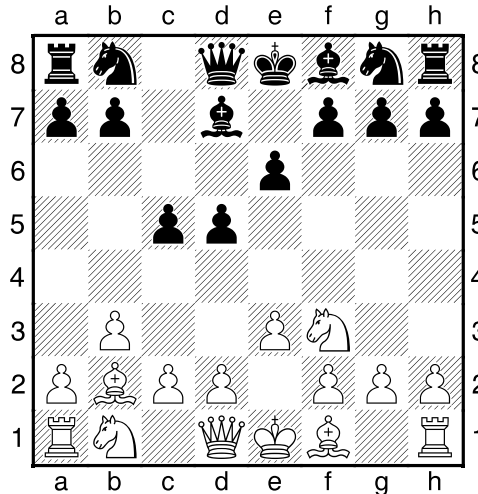
Intern GES Nostalgisch, 25.04.2016

[Deep Fritz 14 x64 (15m)]

[A06: Réti Opening:1 Pf3 d5]

1.Pf3 e6 2.b3 d5 3.Lb2 c5 4.e3 [laatste zet uit boek]

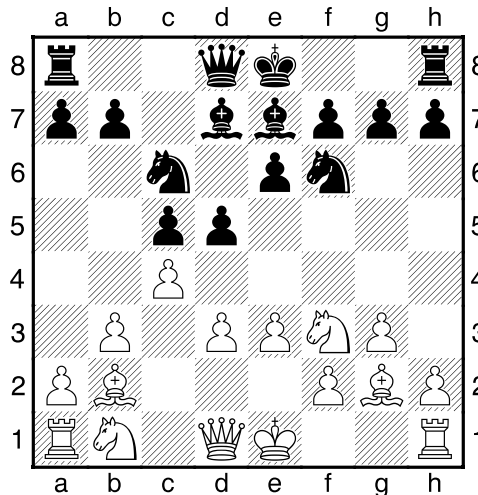
4...Ld7 [Diagram



]

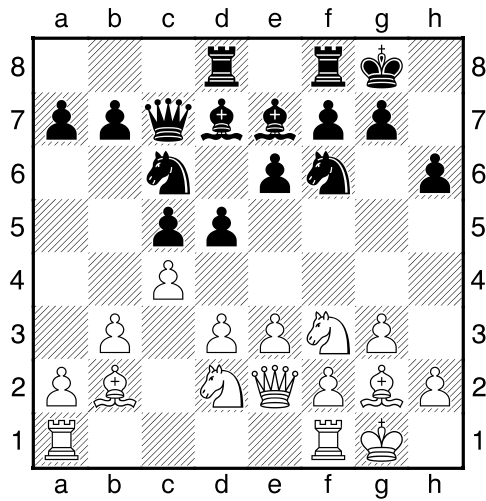
5.c4 Pf6 6.d3 [Dekt e4]

6...Pc6 7.g3 Le7 8.Lg2 [Diagram



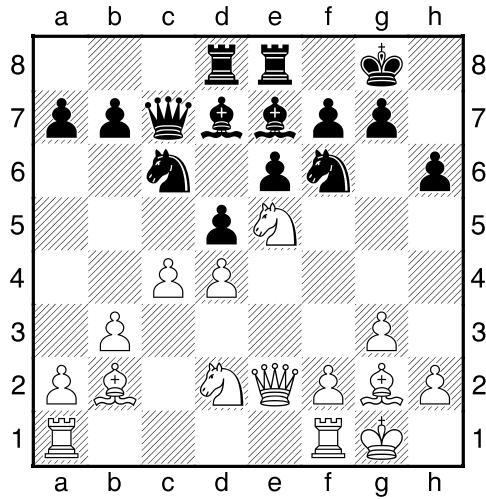
]

8...0-0 9.0-0 Dc7 10.Pbd2 Tad8 11.De2 h6 [Diagram



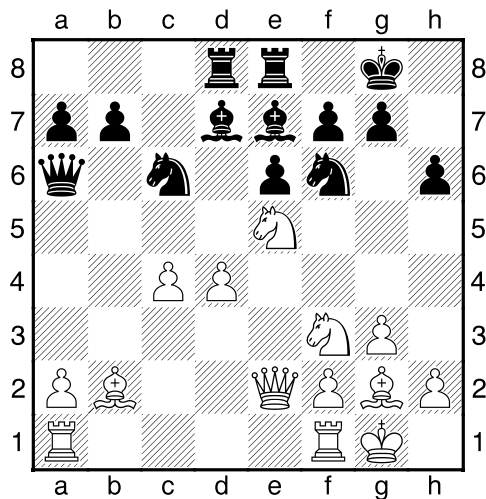
Beherst g5]

12.d4 cxd4 13.exd4 Tfe8 14.Pe5 [Diagram



]

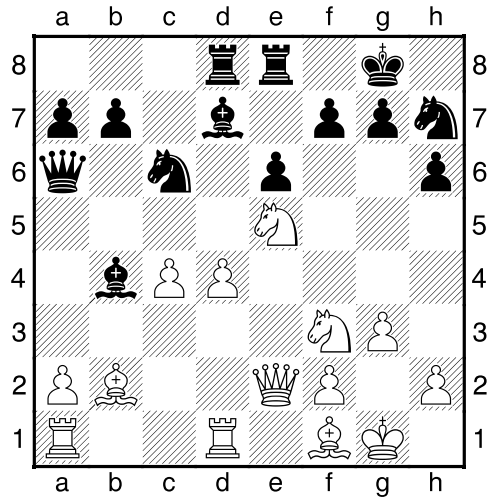
14...Db6 15.Pdf3 dxc4 16.bxc4 Da6 [Diagram



Wit heeft een actieve stelling]

17.Tfe1 Lb4 18.Ted1 Ph7 [18...Pxe5 19.Pxe5 La4 20.Td3=]

19.Lf1 [Diagram

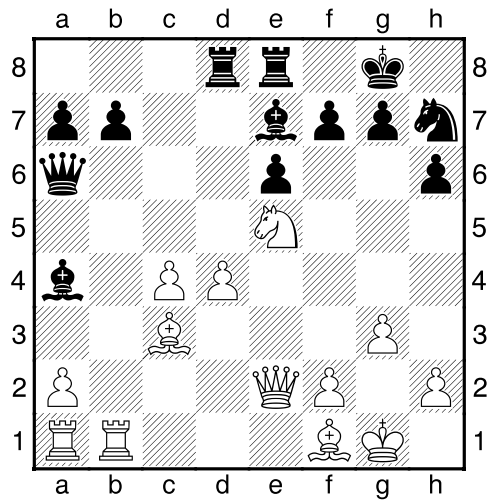


]

[¹19.Pxd7!? Txd7 20.d5±]

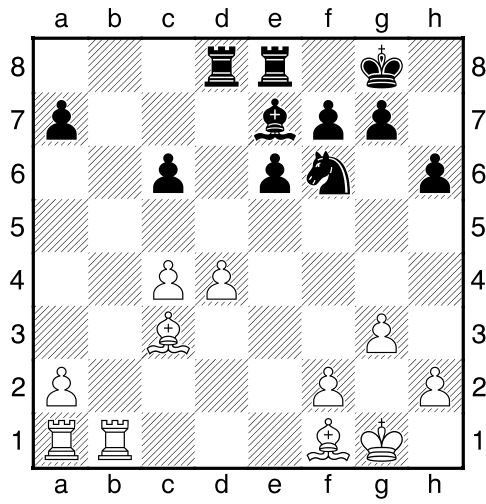
19...Pxe5= 20.Pxe5 La4 [Zwart dreigt met materiaalwinst: La4xd1]

21.Tdb1 Le7 22.Lc3 [Diagram



]

22...Pf6 23.Df3 Lc6 24.Pxc6 Dxc6 25.Dxc6 bxc6 [Diagram



½-½

Mogelijk vervolg

26.Lg2 c5 27.Lc6 Tf8 28.Td1 cxd4 29.Lxd4 Tc8 30.Lb5