

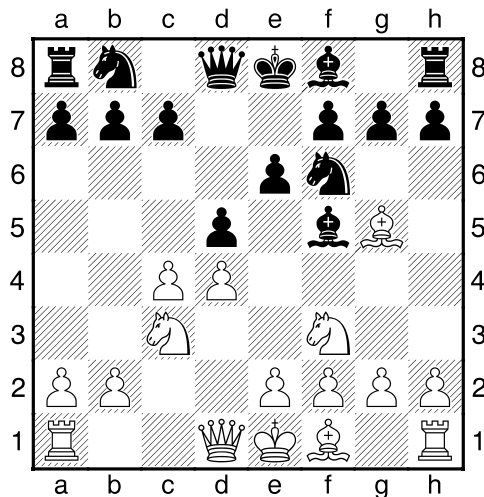
(29) Joachiem, Guddat - Theo, Verstappen [D35]

GESS- Venlo 2, 06.05.2018

[Deep Fritz 14 x64 (15m)]

[D35: Damegambiet Geweigerd: Ruilvariant]

1.d4 Pf6 2.Pf3 d5 3.c4 Lf5 4.Pc3 e6 5.Lg5 [Diagram

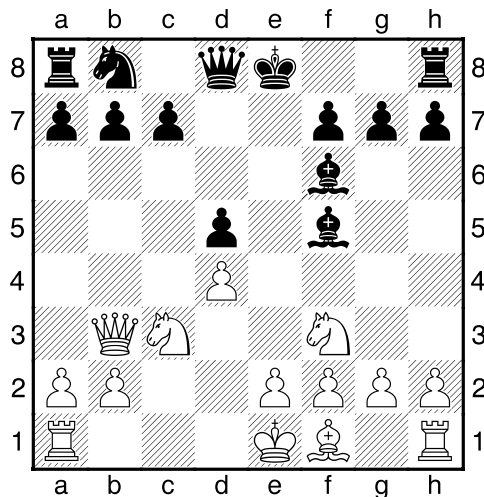


]

5...Le7 [laatste zet uit boek]

6.Lxf6 Lxf6 7.cxd5 exd5 [Zwart heeft een loperpaar]

8.Db3 [Diagram

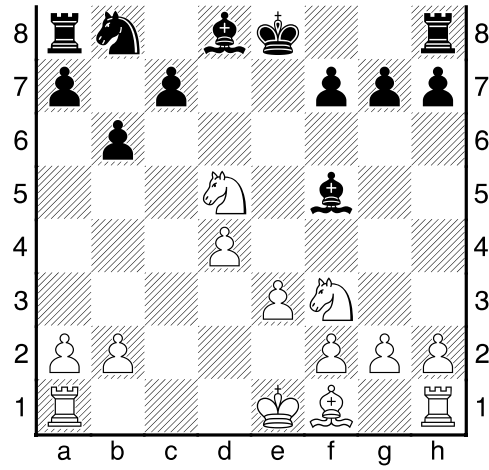


]

8...b6 [8...Pc6!? 9.Pxd5 Lxd4=]

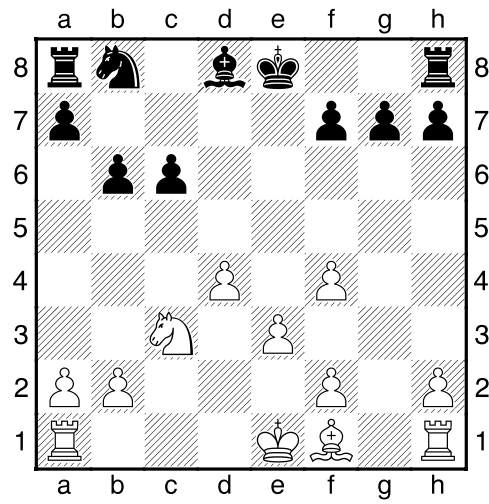
9.Dxd5± Dxd5 10.Pxd5 Ld8 11.e3 [Diagram

a b c d e f g h



]

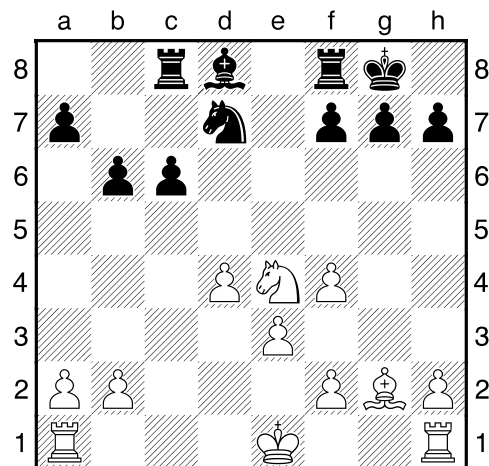
11...Le4 12.Pc3 Lxf3 13.gxf3 c6 14.f4 [Diagram



]

14...Pd7 15.Lg2 Tc8 16.Pe4 [16.Tc1 Tc7+-]

16...0-0 [Diagram



a b c d e f g h

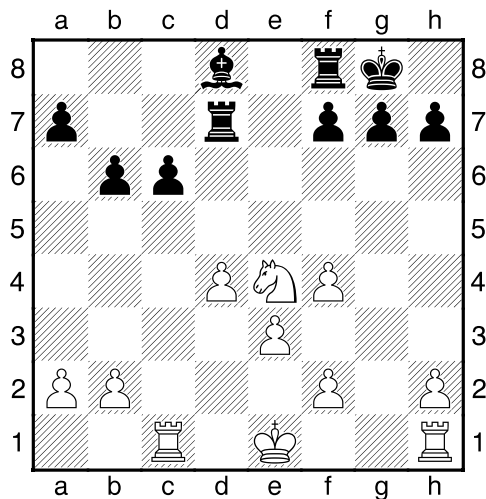
]

[16...Le7 17.Tc1±]

17.Lh3 [17.Pd6 Tc7+-]

17...Tc7 18.Lxd7 [18.Tc1 Pf6 19.Pd6 Pe8±]

18...Txd7 19.Tc1 [Diagram

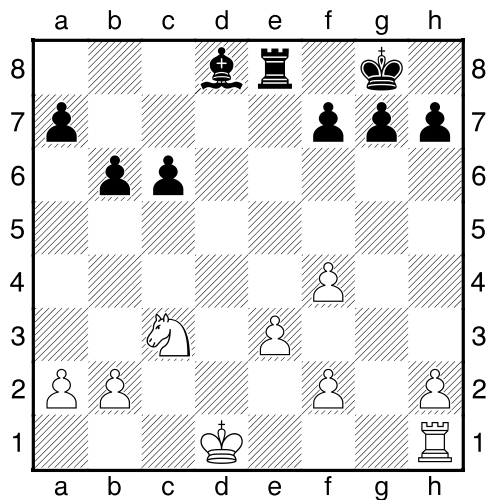


]

[19.Ke2!±]

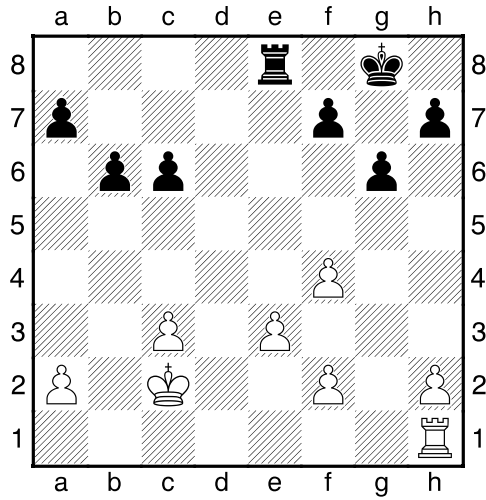
19...Te8= 20.Pc3 [20.Pd2 Txd4 21.Txc6 Ta4=]

20...Txd4³ 21.Td1 Txd1+ 22.Kxd1 [Diagram



]

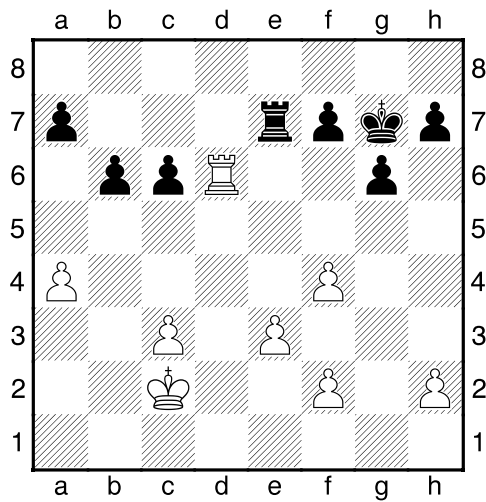
22...Lf6 23.Kc2 Lxc3 24.bxc3 g6 [Diagram



]

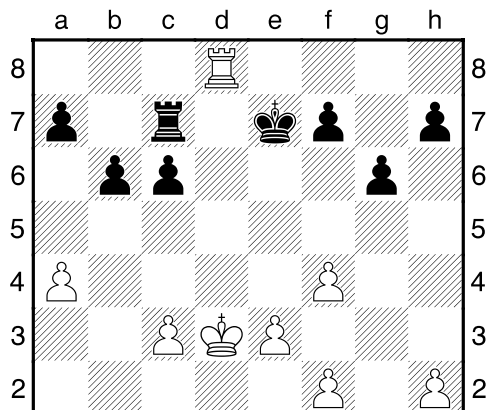
[24...Td8 25.h4³]

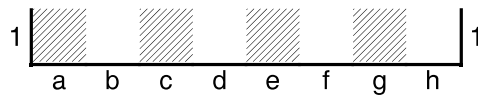
25.Td1= Te7 26.a4 Kg7 27.Td6 [Diagram



Wit dreigt met materiaalwinst: Td6xc6]

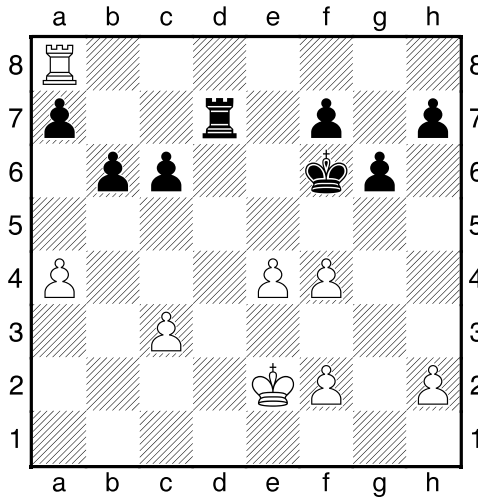
27...Te7 28.Kd3 Kf8 29.Td8+ Ke7 [Diagram





]

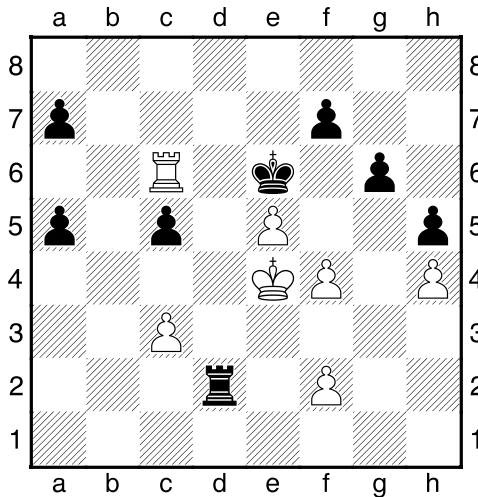
30.Ta8 Kf6 31.e4 Td7+ 32.Ke2 [Diagram



]

32...Ke7 33.Th8 h5 34.Ta8 Kd6 35.Tc8 Kc5 36.e5 [Wit wint ruimte.]

36...Kd5 37.Kd3 c5 38.h4 Ke6+ 39.Ke4 Td2 40.a5 bxa5 41.Tc6+ [Diagram



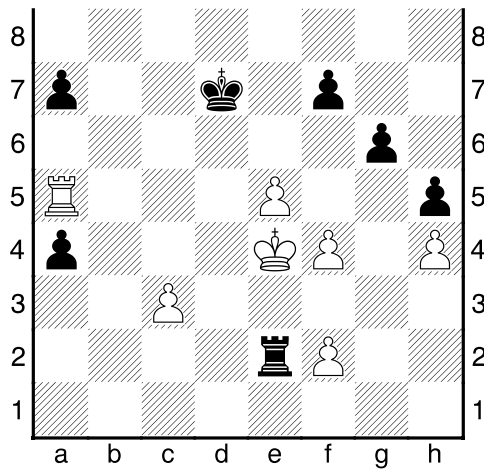
]

41...Kd7 [Zwart dreigt met materiaalwinst: Kd7xc6]

42.Txc5 a4 43.Ta5 [Wit dreigt met materiaalwinst: Ta5xa4]

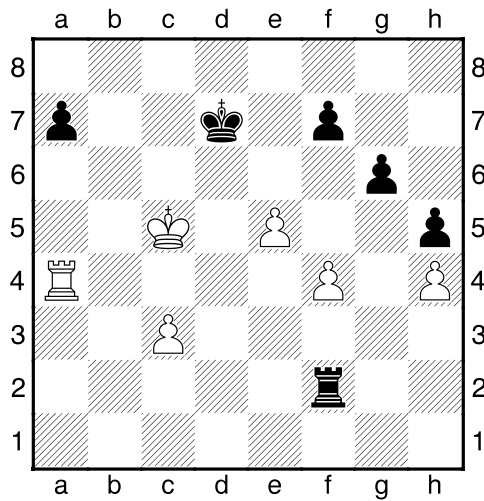
43...Te2+ [Diagram





]

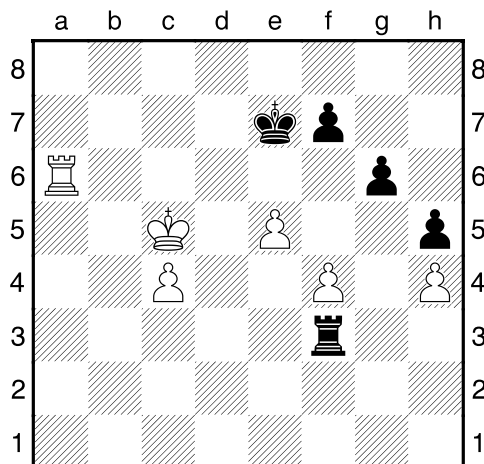
44.Kd5 Td2+ 45.Kc5 Txf2 46.Txa4 [Diagram



Zwart heeft een nieuwe gepasseerde pion: a7]

46...Tf3 [Zwart dreigt met materiaalwinst: Tf3xc3]

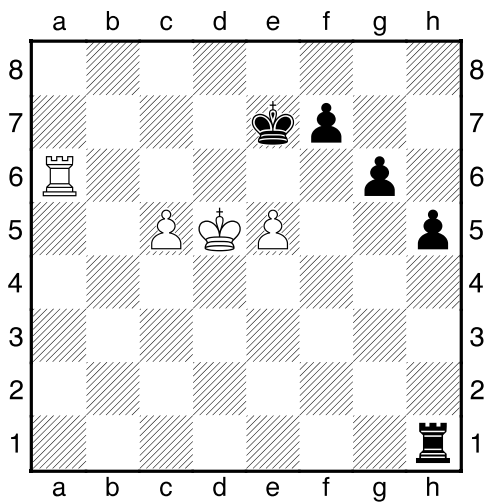
47.Txa7+ Ke6 48.Ta6+ Ke7 49.c4 [Diagram



a b c d e f g h

]

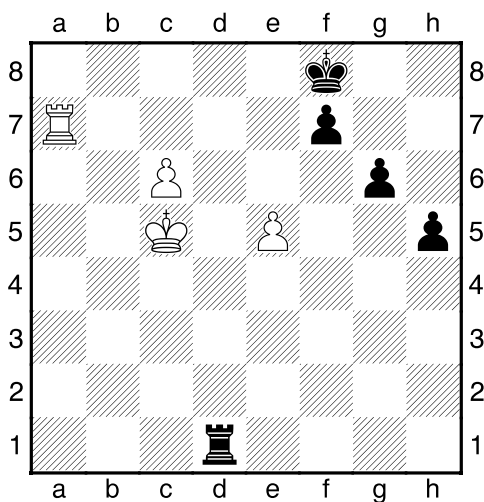
49...Txf4 50.Kd5 Txb4 51.c5 Th1 [Diagram



]

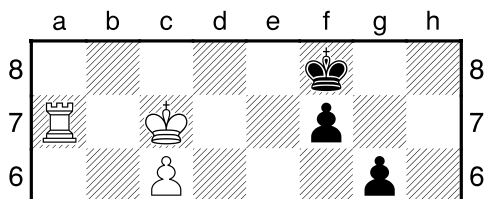
52.Ta7+ Kf8 53.c6 [Wit krijgt voordeel dankzij de voorbijgelaten pion.]

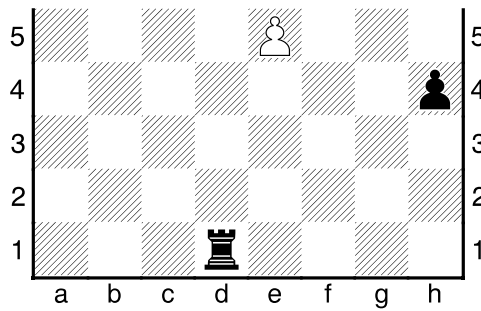
53...Td1+ 54.Kc5 [Diagram



]

54...Tc1+ 55.Kd6 Td1+ 56.Kc7 h4?? [Diagram





]

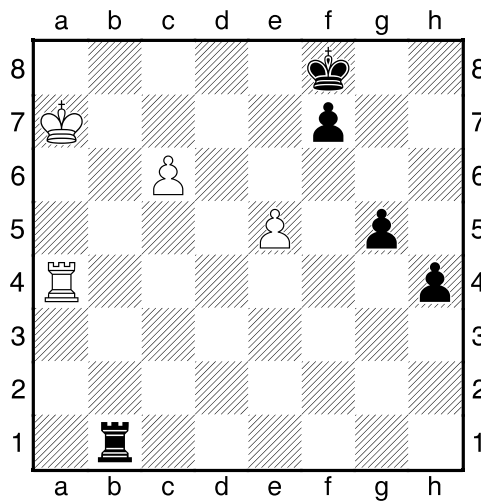
[56...g5=]

57.Ta4?? [De winst is opeens weer ver weg.]

[57.Kb8 Td5 58.c7 Txe5 59.c8D+ Te8 60.Dxe8+ Kxe8 61.Kc7±]

57...g5 58.Kb8?? [58.Ta8+ Was de enige mogelijkheid de strijd gaande te houden. 58...Ke7 59.Th8³]

58...Tb1+–+ 59.Ka7 [Diagram



]

59...Tc1 [59...Ke7 Hiermee zou zwart definitief uit de problemen zijn. 60.e6 Tc1 61.exf7 Txc6–+]

60.Kb6 [60.Kb7 h3 61.Ta8+ Ke7 62.c7 Tb1+ 63.Kc6 Tc1+ 64.Kb7–+]

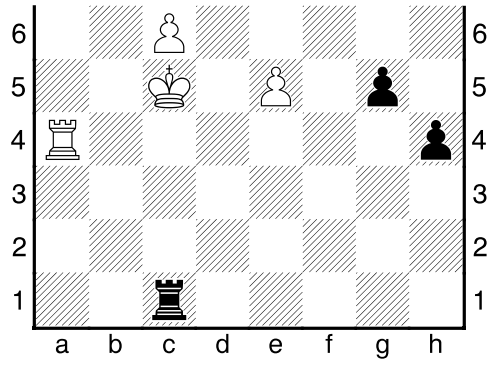
60...Tb1+ [60...h3 Geeft wit geen enkele kans. 61.Ta8+ Kg7–+]

61.Kc5?? [Nu is de tegenstander weer terug in het spel.]

[61.Ka7= Houdt de strijd gaande.]

61...Tc1+ [Diagram





]

$\frac{1}{2}-\frac{1}{2}$