

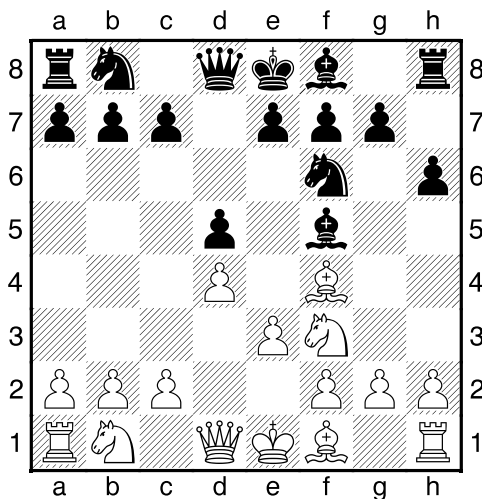
(11) Jan,Pellegrom - Theo,Verstappen [D02]

Intern GESS, 01.05.2018
[Deep Fritz 14 x64 (15m)]

[D02: 1 d4 d5 2 Pf3 Zijvarianten, inclusief 2...Pf6 3 g3 en 2...Pf6 3 Lf4]

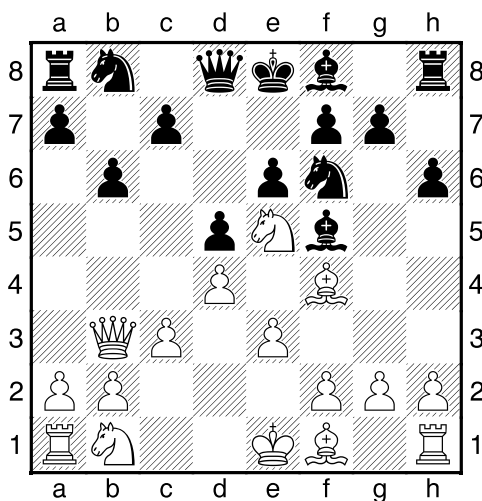
1.d4 d5 2.Lf4 Pf6 3.e3 Lf5 4.Pf3 [laatste zet uit boek]

4...h6 [Diagram]



Controleert g5]

5.c3 e6 6.Db3 b6 7.Pe5 [Diagram]



]

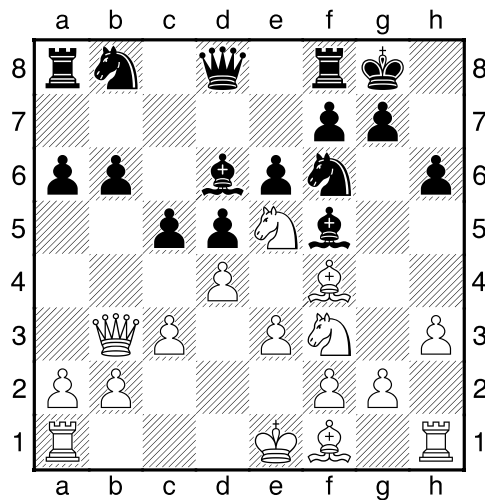
7...a6 [Beheerst b5]

[7...c6 8.Ld3=]

8.Pd2 [8.Da4+ Pfd7=]

8...Ld6= 9.Pdf3 0-0 10.h3 [Zekert g4]

10...c5 [Diagram



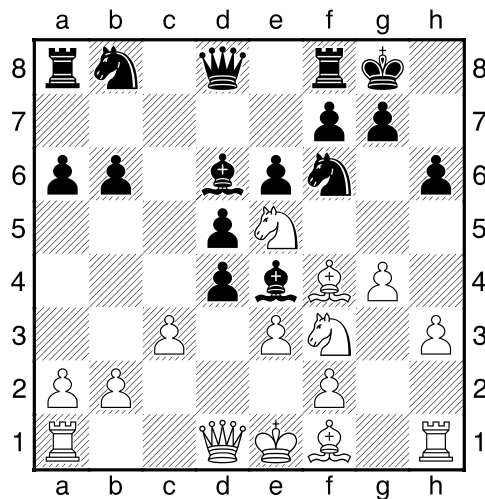
]

[10...Pe4 11.c4³]

11.g4 [Wit dreigt met materiaalwinst: g4xf5]

[11.dxc5!? Is de kritieke voortzetting. 11...Lxc5 12.Le2=]

11...Le4³ 12.Dd1 cxd4 [Diagram



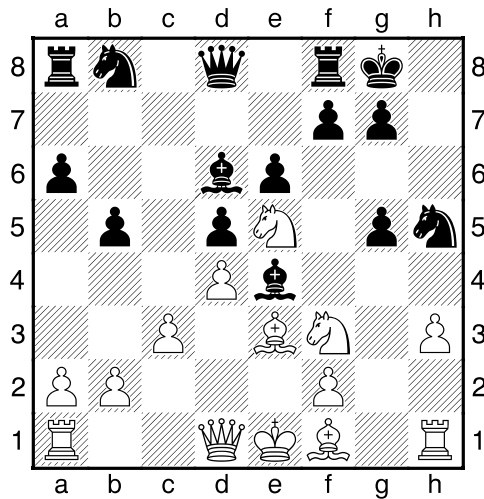
]

13.exd4 [13.cxd4 Lxe5 14.Lxe5 Pc6 15.Lxf6 Dxf6³]

13...b5 [13...Dc7 14.Ld3 Pc6 15.Pxc6 Lxf4 16.Pb4_μ]

14.g5 Ph5 [Zwart dreigt met materiaalwinst: Ph5xf4]

15.Le3 hxg5 [Diagram



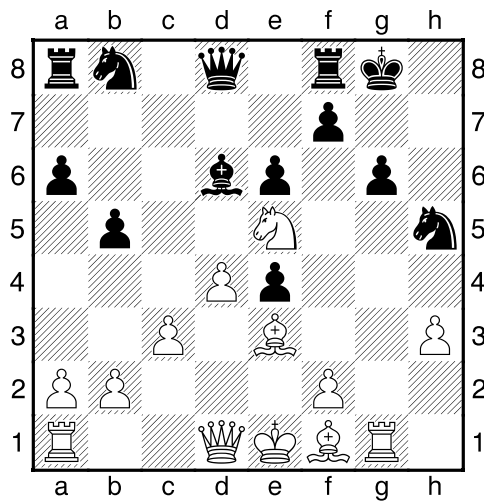
]

[15...f6!? Moet zeker in aanmerking genomen worden. 16.gxf6 Dxf6³]

16.Pxg5= g6 [¹16...Pf6!? Moet overwogen worden. 17.Pxe4 Pxe4=]

17.Pxe4± dxe4 [Wit heeft een loperpaar]

18.Tg1 [Diagram



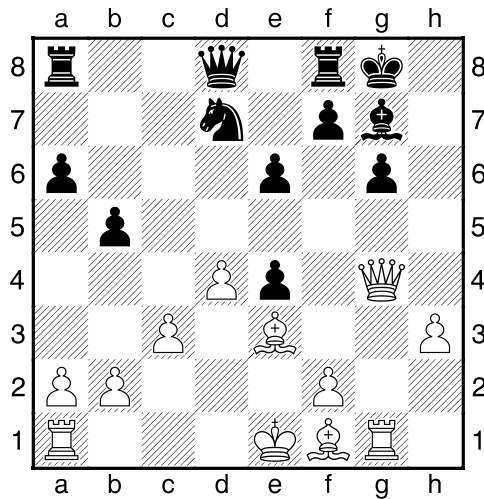
]

18...Lxe5 [18...Pf6 19.Lg5²]

19.Dxh5 [19.dxe5!? Pg7 20.Dxd8 Txd8 21.Lg2±]

19...Lg7² 20.Dg4 [Wit dreigt met materiaalwinst: Dg4xe4]

20...Pd7 [Diagram

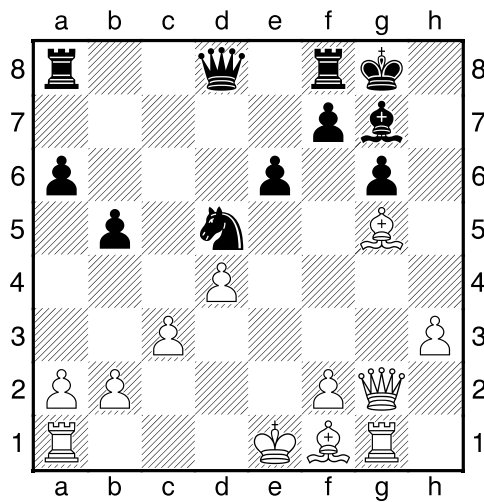


]

21.Dxe4 Pf6 [Zwart dreigt met materiaalwinst: Pf6xe4]

22.Dg2 [22.Df3 Da5²]

22...Pd5= 23.Lg5 [Diagram



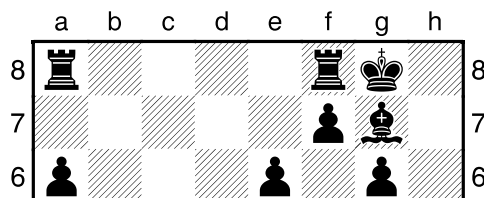
Wit dreigt met materiaalwinst: Lg5xd8]

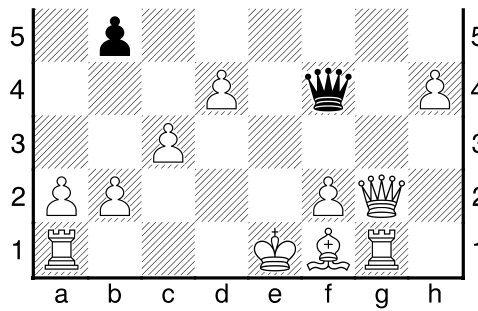
23...Dc7 [23...Da5! 24.Ld2 Tad8=]

24.h4² Pf4 [24...Tab8 25.h5 Deflectie: g6 25...f6 26.Lh4±]

25.Lxf4 [25.Df3 Ph5 26.0-0-0 b4±]

25...Dxf4² [Diagram



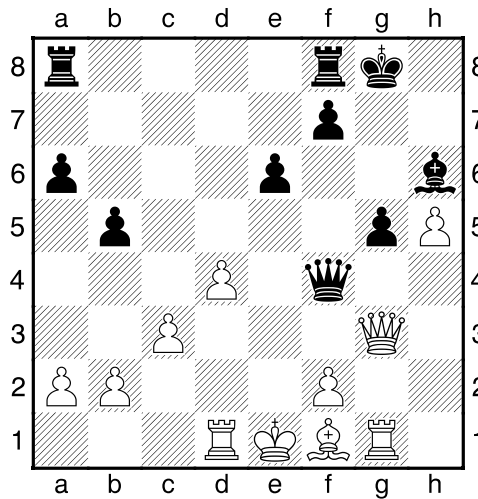


Lopers van tegengestelde kleuren. Zet een val op voor de koning in het centrum.]

26.h5 [Wit dreigt met materiaalwinst: h5xg6. Deflectie: g6]

26...Lh6 [26...gxh5 27.Dxg7# Mat aanval Deflectie Penning; ...26...-- 27.hxg6 Wins material]

27.Td1± g5 28.Dg3 [Diagram]



]

28...De4+ 29.De3 Dxe3+ 30.fxe3 [Diagram]

