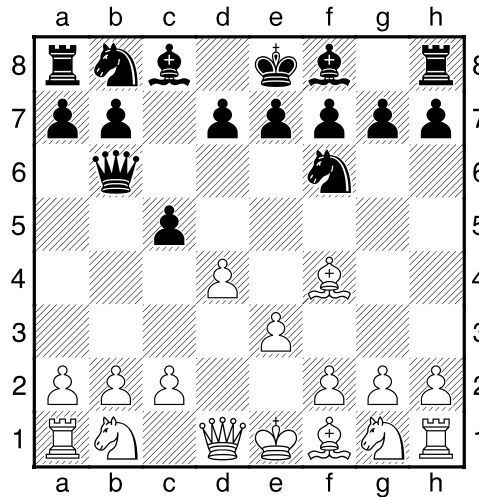


(25) Jan,Pellegrom - Piet,van Nassau [A45]

Intern GESS, 26.03.2018
[Deep Fritz 14 x64 (15m)]

[A45: Trompowsky Aanval]

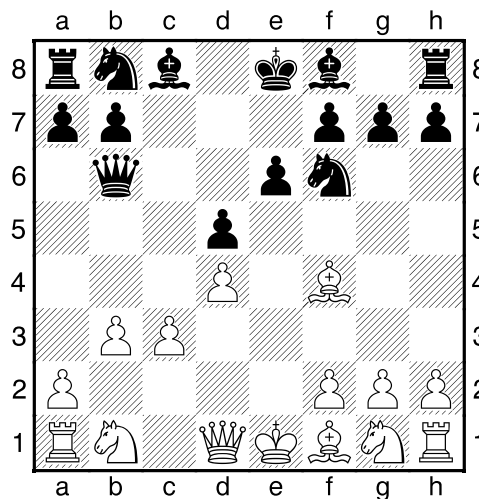
1.d4 Pf6 2.Lf4 c5 3.e3 Db6 [Diagram



laatste zet uit boek]

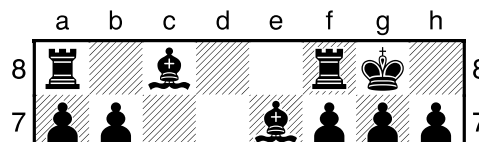
4.b3 cxd4 5.exd4 e6 6.c3 [Zekert b4]

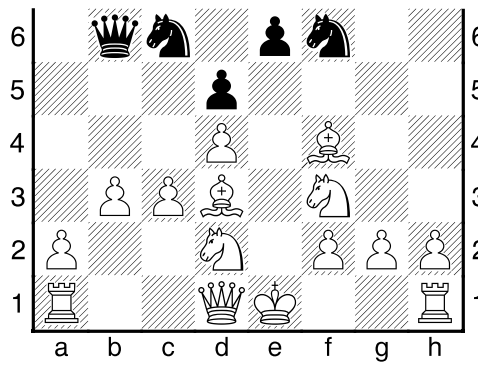
6...d5 [Diagram



]

7.Pf3 Pc6 8.Ld3 Le7 9.Pbd2 0-0 [Diagram



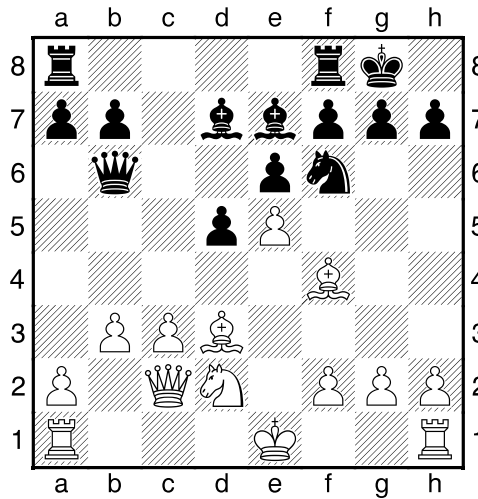


]

10.Dc2 Ld7 11.Pe5 [11.0-0 Tac8 12.a3 h6=]

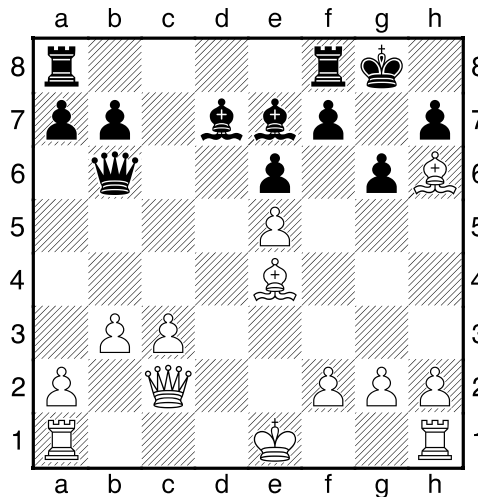
11...Pxe5 [11...Pxd4!? 12.Db2 Pc6μ]

12.dxe5= [Diagram



12...Pe4 [12...Ph5!? Is interessant. 13.Le3 Lc5 14.Lxc5 Dxc5=]

13.Pxe4± dxe4 14.Lxe4 g6 15.Lh6 [Diagram

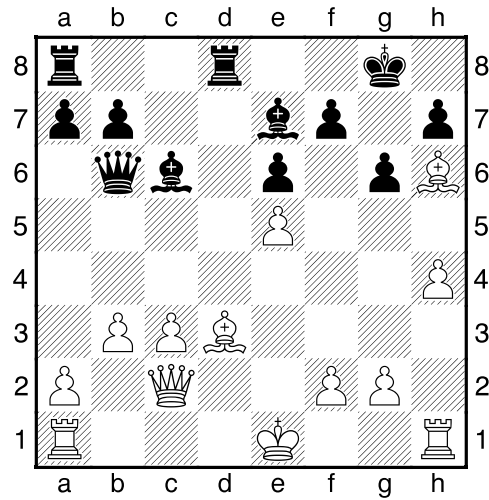


Wit dreigt met materiaalwinst: Lh6xf8]

15...Tfd8 16.h4 [16.0-0!??]

16...Lc6 [Zwart verbied lange rokade.]

17.Ld3?? [Diagram



Hierna keren de kansen.]

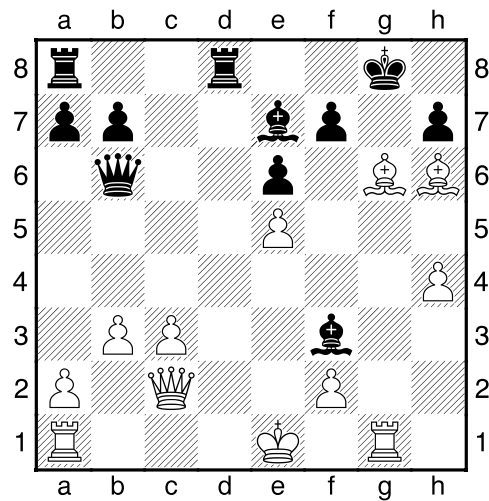
[!17.h5!? Moet zeker in aanmerking genomen worden. 17...Lxe4 18.Dxe4=]

17...Lxg2 [17...Da5!? 18.0-0-0 Lxg2--+]

18.Tg1 Lf3?? [Geeft de tegenstander nieuwe kansen.]

[!18...Dc6 19.0-0-0 Lxh4μ]

19.Lxg6!+- [Diagram



Mat dreiging]

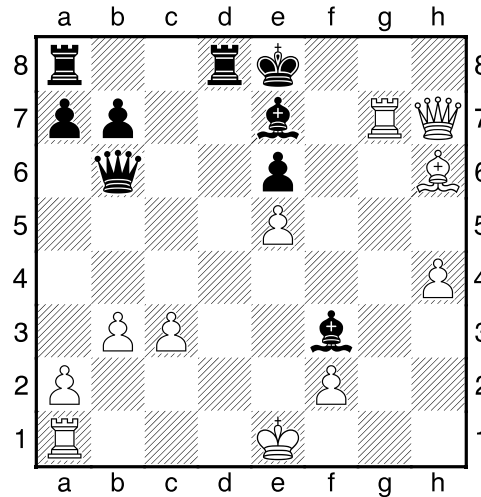
19...fxg6 [19...fxg6 20.Txg6+ Kf7 (20...Kh8 21.Tg7 Combinatie; 20...hxg6 21.Dxg6+ Mat aanval) 21.Tf6+ Lxf6

(21...Ke8 22.Txf3 Combinatie; 21...Kg8 22.Txf3 Combinatie) 22.Dxh7+ Lokaas Deflectie; 19...hxg6 20.Txg6+ fxg6 (20...Kh7 21.Tg7+ Mat aanval; 20...Kh8 21.Tg7 Combinatie) 21.Dxg6+ Mat aanval; ...19...-- 20.Lxh7+ Mat dreiging]

20.Txg6+! [Mat aanval.]

20...Kf7 [20...hxg6 21.Dxg6+ Mat aanval]

21.Tg7+ Ke8 22.Dxh7 [Diagram



]

22...Dc7?? [Een fout, maar er was niets meer te redden.]

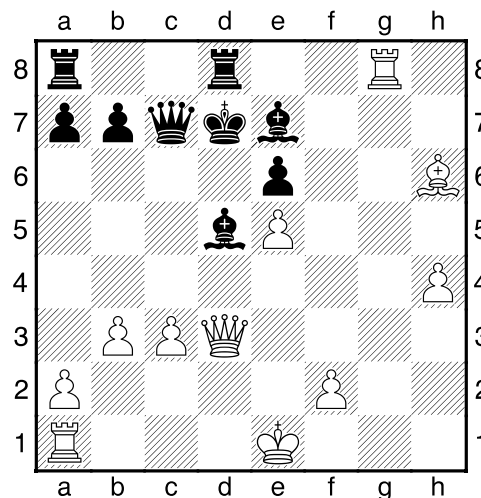
[22...Dc5 23.Kf1 Kd7 24.Lg5+--]

23.Tg8+ [!23.Dg6+ En wit wint. 23...Kd7 24.Txe7+ Kxe7 25.Dg7+ Ke8 26.Dxc7+--]

23...Kd7 24.Dd3+?? [Hierna is het weer een partij.]

[!24.Dxe7+! En wit haalt de buit binnen. 24...Kxe7 25.Tg7+ Ke8 26.Txc7+--]

24...Ld5-- [Diagram

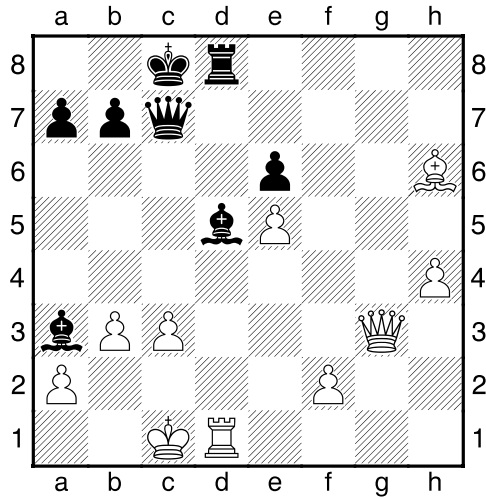


]

25.Txd8+ Txd8 26.0-0-0 [26.Td1 Dxe5+ 27.De3 Dxe3+ 28.Lxe3 Tg8-+]

26...Kc8 27.Dg3 [27.Lg5 La3+ 28.Kd2-+]

27...La3+ [Diagram



]

[27...La3+ 28.Kc2 Le4+ 29.Td3 Dh7 30.b4 Txd3 31.Dg2 Lxg2 32.f4 Td6+ 33.f5 Dxf5+ 34.Kb3 Db1+ 35.Ka4 Lxb4 36.cxb4 Dxa2+ 37.Kb5 Td5#]

0-1