

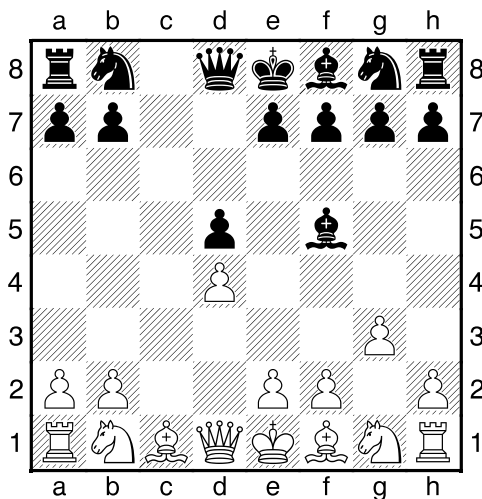
(1) Henk, Marwa - Theo, Verstappen [D10]

Intern GESS, 06.11.2017
[Deep Fritz 14 x64 (15m)]

[D10: Slavische Verdediging: 3.cxd5 (zonder vroege Pf3) en 3.Pc3]

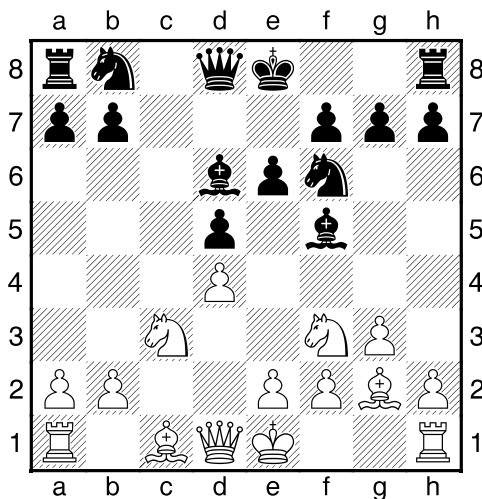
1.d4 d5 2.c4 c6 3.cxd5 cxd5 4.g3 [laatste zet uit boek]

4...Lf5 [Diagram]



]

5.Lg2 Pf6 6.Pc3 e6 7.Pf3 Ld6 [Diagram]



]

8.0-0 [8.Ph4 Lg4=]

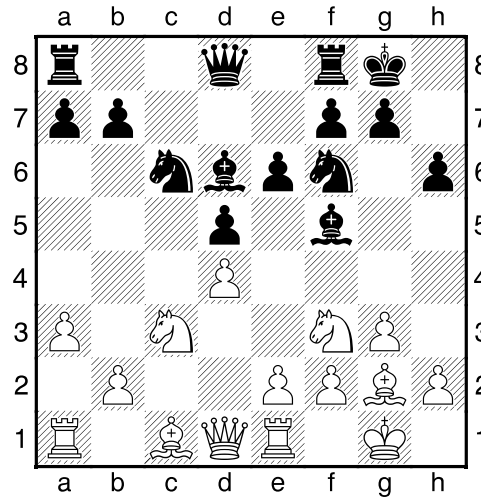
8...h6 [Beheerst g5]

[8...Pc6 9.Pb5=]

9.Te1 [9.Db3!? Is een bruikbaar alternatief. 9...0-0 10.Dxb7?]

9...Pc6³ 10.a3 [Zwart heeft een actieve stelling]

10...0-0 [Diagram

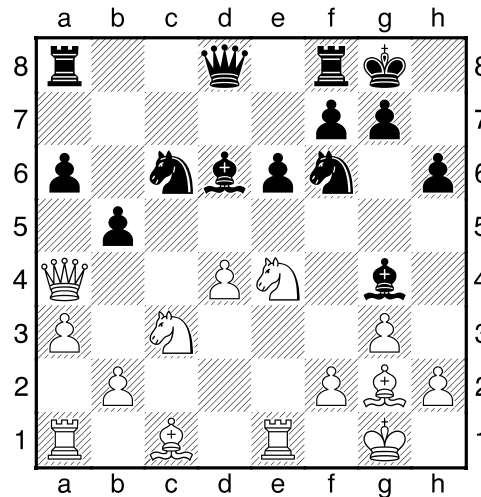


]

11.e4? [11.b4 a6³]

11...dxe4 [11...Pxe4!? 12.Pxe4 Lxe4 13.Ld2μ]

12.Pd2 Lg4 13.Da4 a6 14.Pdxe4 b5 [Diagram



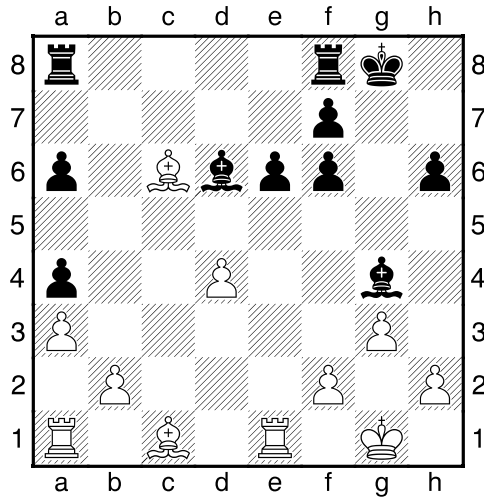
]

15.Pxf6+ [15.Dc2!? Pxd4 16.Dd3μ]

15...Dxf6-+ 16.Pe4 bxa4?? [Geeft de tegenstander nieuwe kansen.]

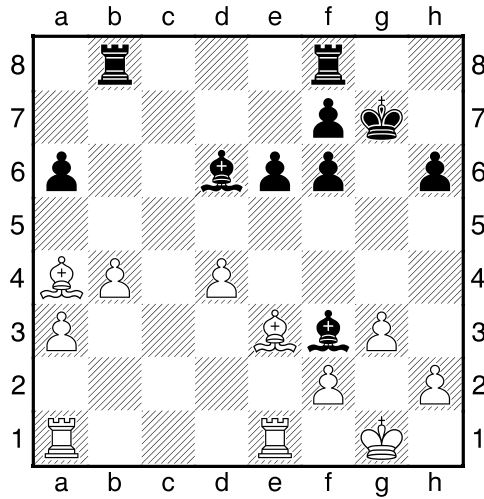
[¹16...Dd8 Dit zou groot voordeel voor zwart hebben opgeleverd. 17.Dc2 Pxd4-+]

17.Pxf6+± gxf6 18.Lxc6 [Diagram



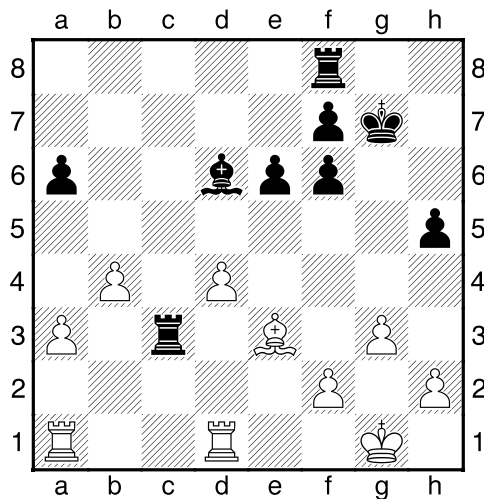
]

18...Tab8 19.Lxa4 Kg7 20.b4 Lf3 21.Lc3 [Diagram

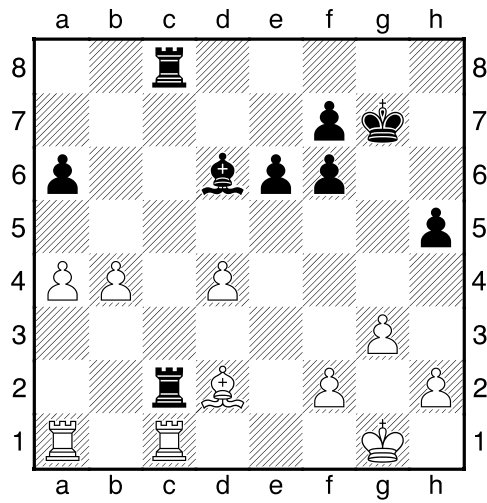


21...Tbc8 [21...a5 22.bxa5 Ta8 23.Lb5±]

22.Tec1 h5 23.Ld1 Lxd1 24.Txd1 Tc3 [Diagram



25.Tdc1 Tfc8 26.Ld2 Tc2 27.a4 [Diagram

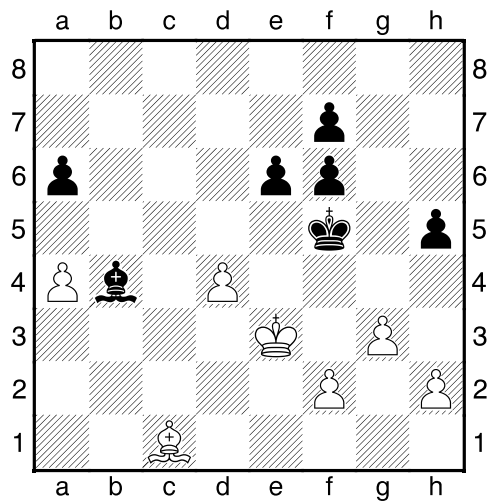


]

[!27.Kf1±]

27...Txc1+= 28.Txc1 Txc1+ 29.Lxc1 Lxb4 [Een lopen eindspel ontstaat.]

30.Kf1 Kg6 31.Ke2 Kf5 32.Ke3 [Diagram

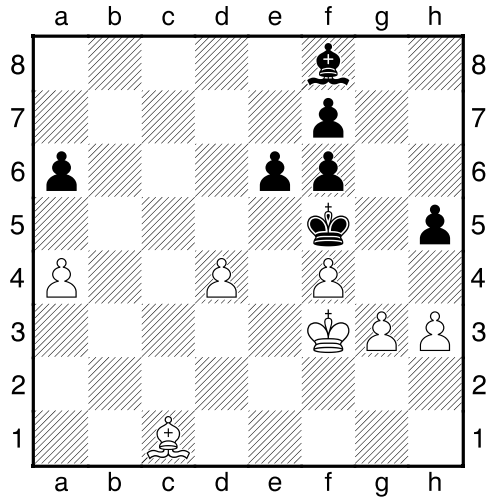


]

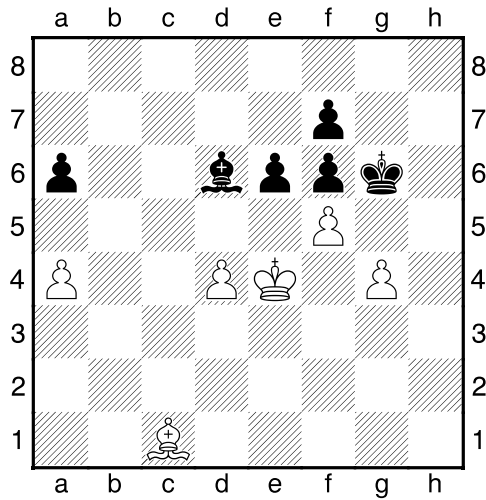
[32.f3 Ld6=]

32...Lf8 [32...Kg4!?!]

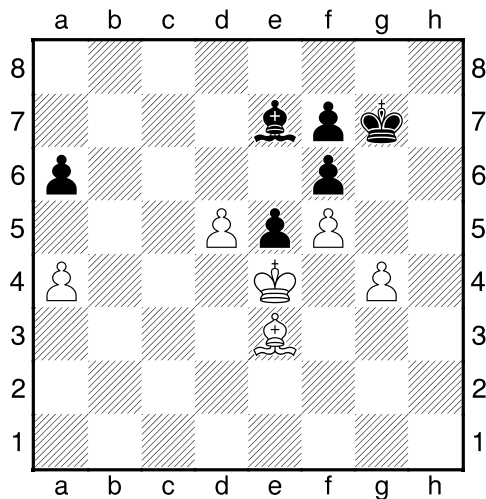
33.h3= Lh6+ 34.f4 Lf8 35.Kf3 [Diagram



35...Lb4 36.g4+ hxg4+ 37.hxg4+ Kg6 38.Kc4 Ld6 39.f5+ [Diagram



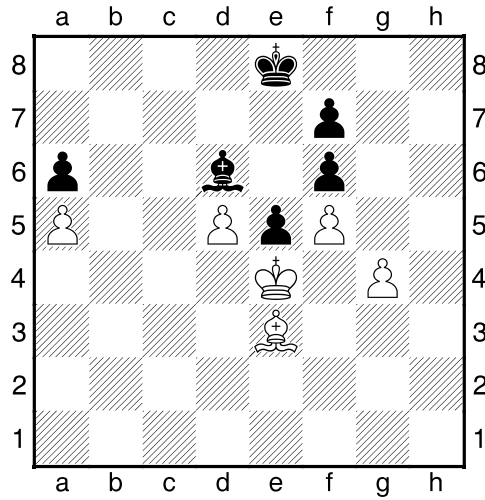
Met deze zet wordt meer ruimte gewonnen.]
 39...Kg7 40.Le3 Le7 [40...Kf8 41.g5 fxg5 42.Lxg5=
 41.d5² [Wit dreigt met materiaalwinst: d5xe6]
 41...e5 [Diagram



Wit heeft een nieuwe gepasseerde pion: d5. Zwart heeft een nieuwe beschermde pion: e5]

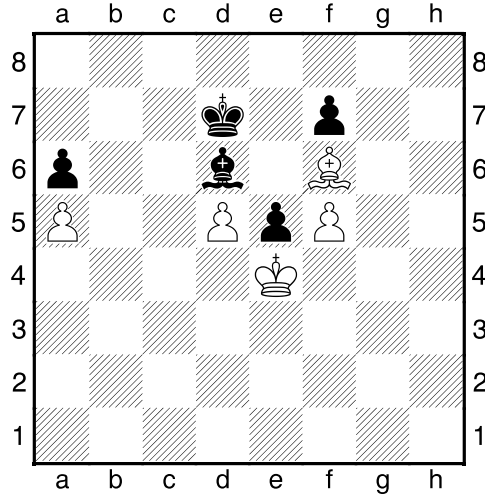
42.Kd3 [42.Lf2 Ld6²]

42...Kf8= 43.a5 Ke8 44.Ke4 Ld6 [Diagram



De zwarte loper is veilig voor het stuk op d5.]

45.g5 fxg5 46.Lxg5 Kd7 47.Lf6 [Diagram

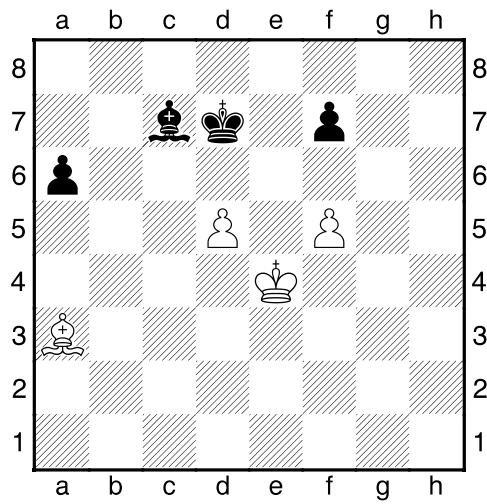


Wit dreigt met materiaalwinst: Lf6xe5]

47...Lc7 [Zwart dreigt met materiaalwinst: Lc7xa5]

48.Lxe5 Lxa5 [Zwart heeft een nieuwe gepasseerde pion: a6]

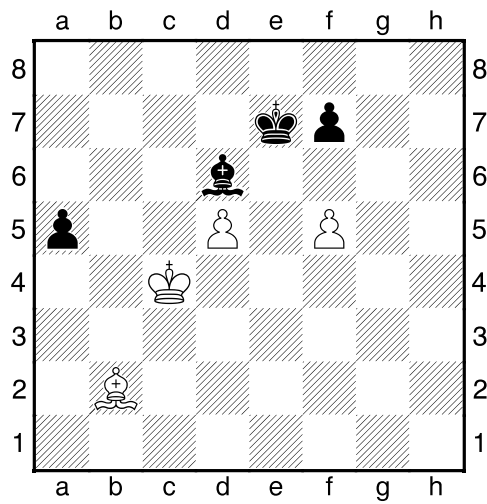
49.Lb2 Lc7 50.La3 [Diagram



]

50...Ld6 [Zwart dreigt met materiaalwinst: Ld6xa3]

51.Lb2 a5 52.Kd3 Ke7 53.Kc4 [Diagram

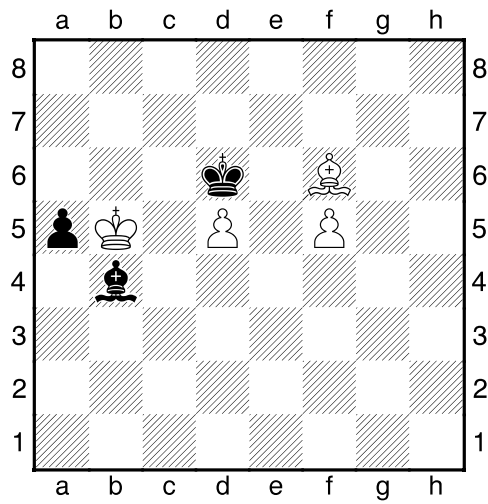


]

53...f6 54.Kb5 [Wit dreigt met materiaalwinst: Kb5xa5]

54...Lb4 55.Ld4 Kd6 [Zwart dreigt met materiaalwinst: Kd6xd5]

56.Lxf6 [Diagram



]

56...Kxd5 [Wit heeft een nieuwe gepasseerde pion: f5]

57.Ld8 [Valt de pion aan op a5, die nogal geïsoleerd staat.]

57...Lc3

½-½