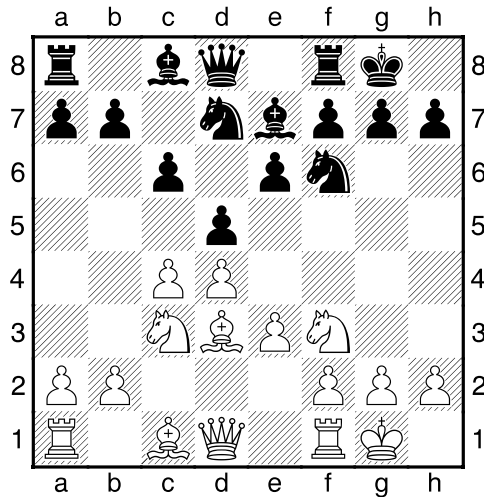


**(6) Frans,Hanssen - Theo,Verstappen [D46]**

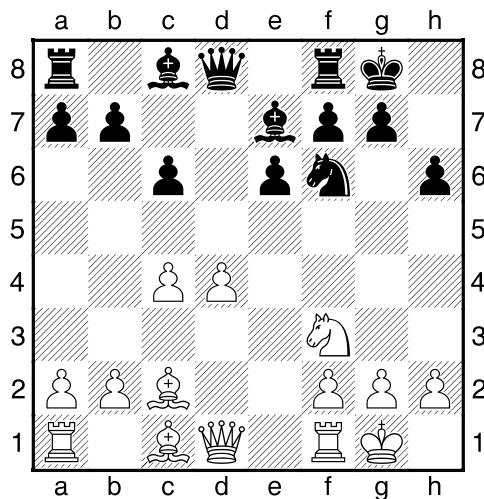
Intern GESS, 14.03.2016  
[Deep Fritz 14 x64 (10m)]

[D46: Semi-Slavisch: 5 e3 Pbd7 6 Ld3, Zwart vermijdt de Meran]

1.d4 d5 2.c4 c6 3.Pc3 Pf6 4.Pf3 e6 5.e3 Le7 6.Ld3 0-0 7.0-0 Pbd7 [Diagram

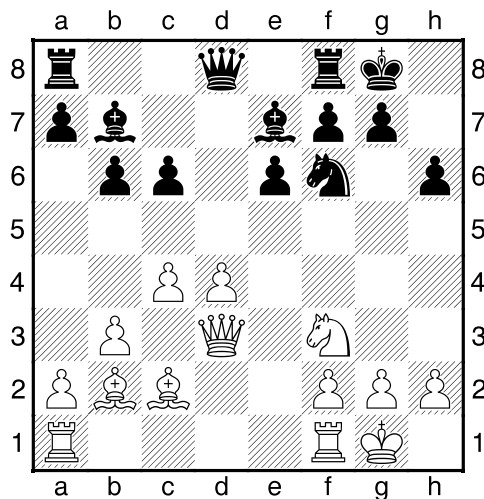


8.e4 dxe4 9.Pxe4 Pxe4 10.Lxe4 Pf6 11.Lc2 h6 [Diagram



laatste zet uit boek]

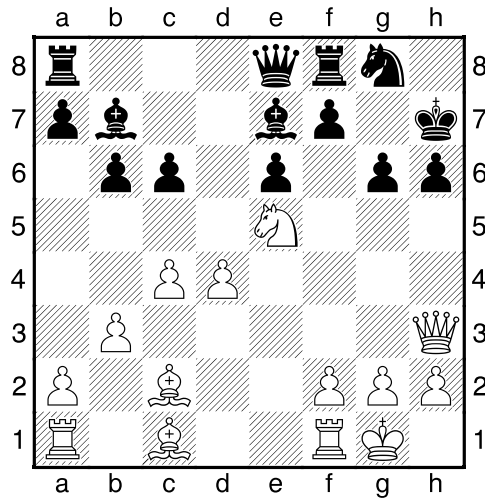
12.b3 b6 13.Lb2 Lb7 14.Dd3 [Diagram



14...g6 [14...Te8!?= Is een interessant alternatief.]

15.Pe5± De8 16.Dh3 Kh7 [16...h5 17.Tae1 Lb4 18.Te2±]

17.Lc1 Pg8 [Diagram



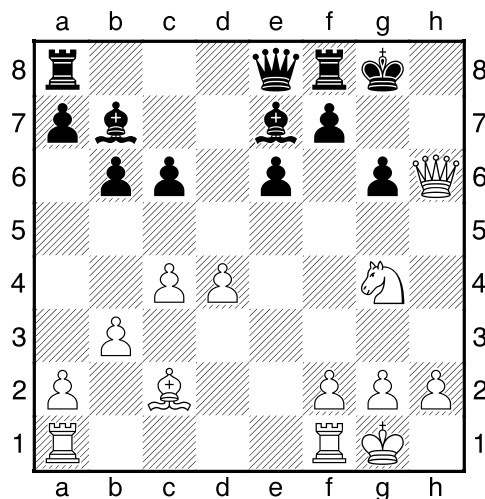
]

[17...h5!±]

18.Pg4+- h5?? [zwart stort in.]

[18...Td8 19.Lxh6 Pxh6 20.Dxh6+ Kg8+-]

19.Dxh5+ Kg7 20.Lh6+ Pxh6 21.Dxh6+ Kg8 [Diagram

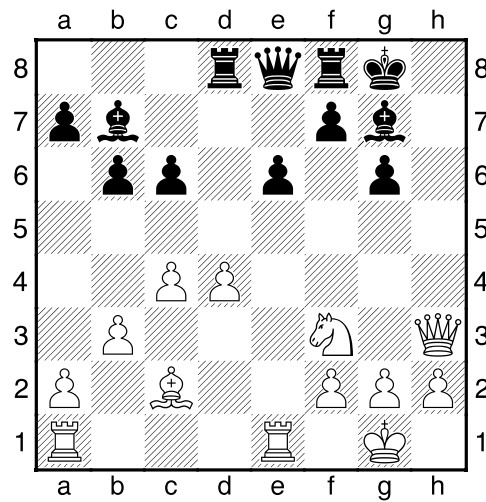


]

22.Pe5 [22.Tfe1 Na deze krachtzet is de stelling niet meer te houden. 22...Lh4 23.Dxh4+-]

22...Lf6± 23.Tfe1 Lg7 24.Dh3 Td8 [24...De7 25.Tad1 Tfd8 26.Pxg6 fxg6 27.Txe6±]

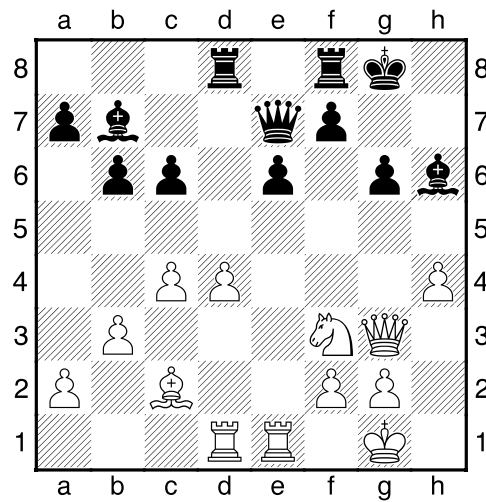
25.Pf3 [Diagram



White has a mate threat]

[25.Tad1!±]

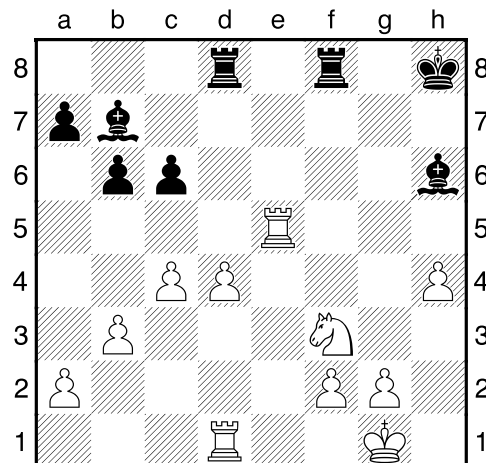
25...De7<sup>2</sup> 26.Tad1 Lc8 27.Dg3 Lb7 28.h4 Lh6? [Diagram



[28...Td6 29.Dg4±]

29.Lxg6 [129.h5!/? g5 30.Pe5+]

29...fxg6± 30.Dxg6+ Dg7 31.Dxe6+ Kh8 32.De5 Dxe5 33.Txe5 [Diagram



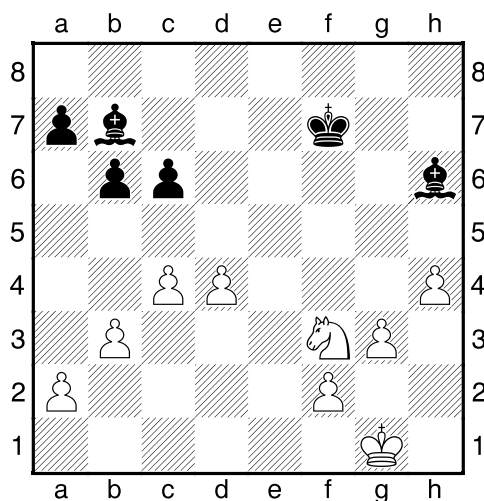
a b c d e f g h

[33.Pxe5 Kg8<sup>2</sup>]

33...Kg7 [133...Lc8!?= Is misschien sterker.]

34.Te7+± Tf7 [Zwart dreigt met materiaalwinst: Tf7xe7]

35.Tde1 Tdf8 36.T1e6 Txe7 37.Txe7+ Tf7 38.Txf7+ Kxf7 39.g3 [Diagram

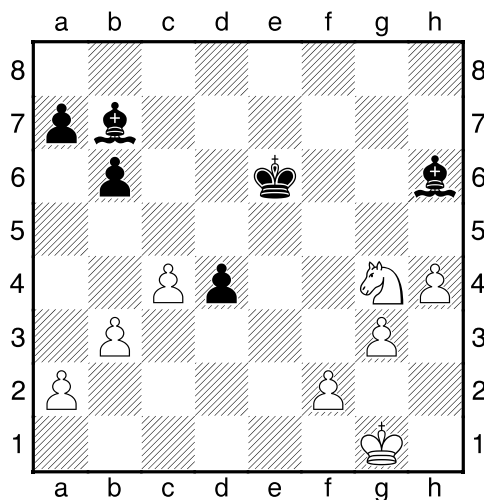


Controleert f4]

39...Ke6 40.Pe5 [40.g4 Lf4±]

40...c5 [140...Ld2!?= Moet zeker in aanmerking genomen worden.]

41.Pg4± cxd4?? [Diagram



En het gaat verder bergafwaarts.]

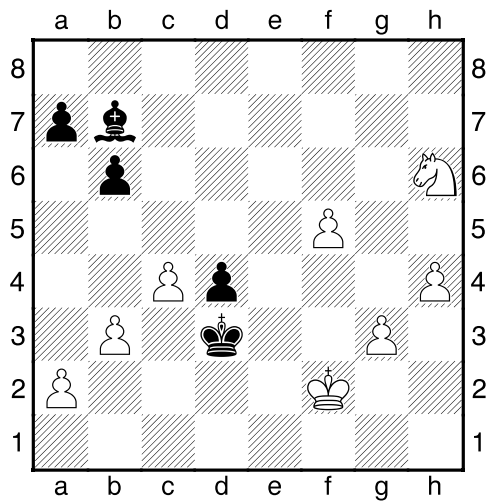
[141...Lc1 42.d5+ Kd6±]

42.Pxh6+– Ke5 [42...Kf6 Dit kan de uitslag niet meer beïnvloeden. 43.Kf1 Le4 44.Ke2+–]

43.f4+ Ke4 [43...Kf6 Dit helpt ook niet meer. 44.Kf2 Le4 45.Ke2+-]

44.Kf2 Kd3 [44...d3 Hoopt op het onmogelijke. 45.f5 Kd4+-]

45.f5 [Diagram ]



Remise door overeenkomst.

1/2-1/2