

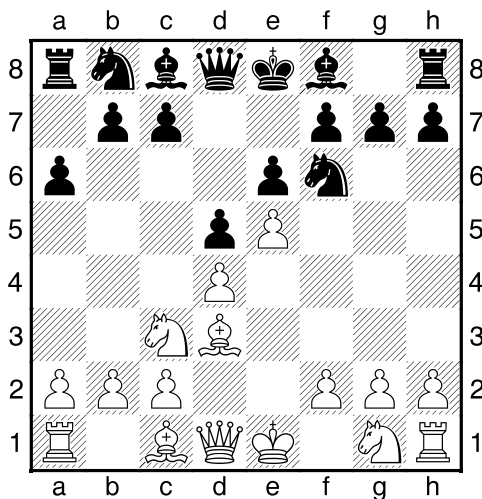
(66) Bart,Koelman - Marlies,Hamers [C11]

Intern GESS, 11.09.2017
[Deep Fritz 14 x64 (15m)]

[C11: Frans: Klassiek Systeem: 4 e5 en 4 Lg5 dxe4]

1.e4 e6 2.d4 d5 3.Pc3 Pf6 4.Ld3 a6 [laatste zet uit boek. Zwart is achter in ontwikkeling]

5.e5 [Diagram



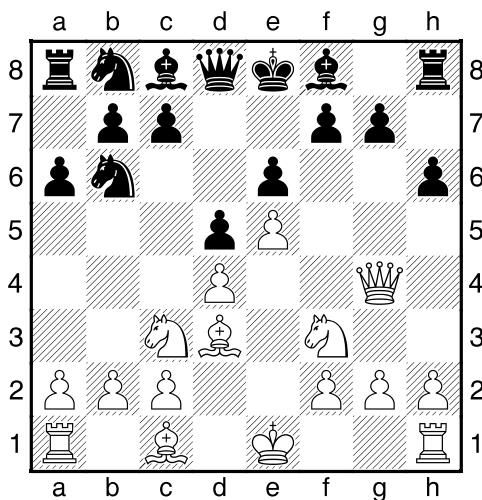
Wit dreigt met materiaalwinst: e5xf6]

5...Pfd7 6.Dg4 [6.Pce2 c5 7.c3 cxd4 8.cxd4 Pc6=]

6...h6 [Dekt g5]

[!6...c5!? 7.Pf3 cxd4μ]

7.Pf3 Pb6 [Diagram



Zwart is achter in ontwikkeling]

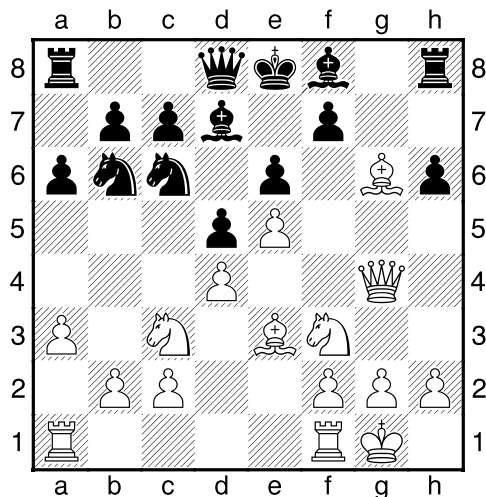
[7...c5!? 8.dxc5 Pc6=]

8.0-0 Pc6 [Zwart moet snel de ontwikkeling afronden.]

9.a3 [Beheerst b4]

9...Ld7 [Zwart's positie is in het nauw]

10.Le3 g6 11.Lxg6 [Diagram

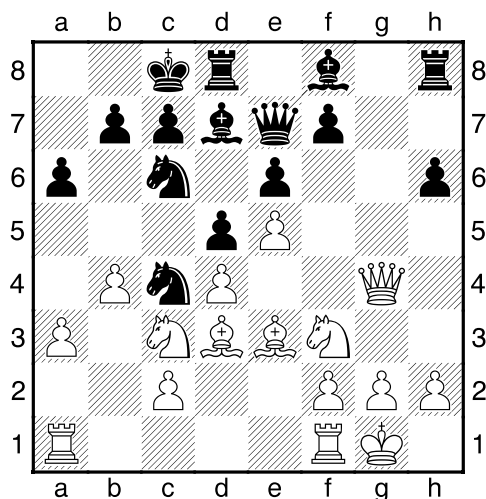


]

[11.Pd2²]

11...De7 [11...Tg8!? En zwart kan nog vechten. 12.Lxf7+ Kxf7 13.Dh5+ Ke7 14.Dh4+ Ke8 15.Dh5+ Ke7 16.Dh4+ Ke8 17.Dh5+ Ke7=]

12.Ld3± 0-0-0 13.b4 Pc4 [Diagram



]

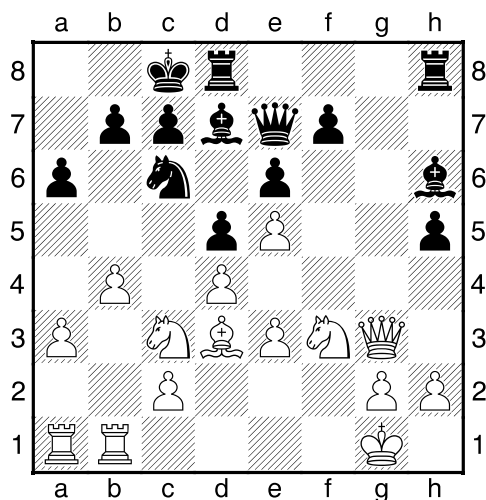
[13...Kb8±]

14.Tfb1 [14.Lxc4 Zou het leven van wit veel gemakkelijker hebben gemaakt. 14...dxc4 15.Pe4+-]

14...Pxe3² 15.fxe3 [Zwart heeft een looperpaar]

15...h5 [Zwart dreigt met materiaalwinst: h5xg4]

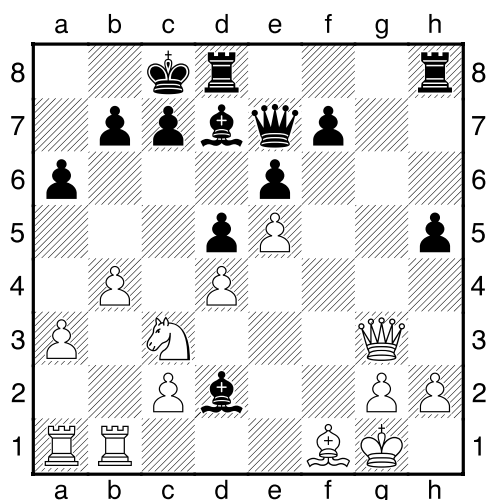
16.Dg3 Lh6 [Diagram



]

17.Pd2 [17.Df2!? Ziet er nog speelbaar uit. 17...f5 18.exf6 Dxf6 19.a4²]

17...Pxd4µ 18.exd4 Lxd2 19.Lf1 [Diagram



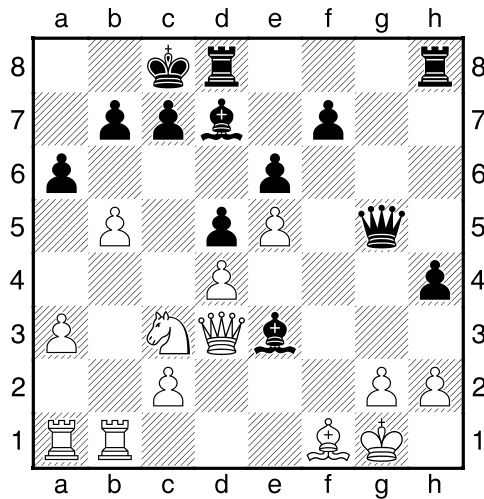
]

[19.Pe2 Thg8 20.Df3 Dg5µ]

19...h4 20.Dd3 Dg5 21.b5?? [Neemt de zorgen niet weg.]

[21.Kh1 Tdg8µ]

21...Le3+ [Diagram



]

[¹21...De3+ Beslist de partij meteen. 22.Dxe3 Lxe3+ 23.Kh1 Lxd4-+]

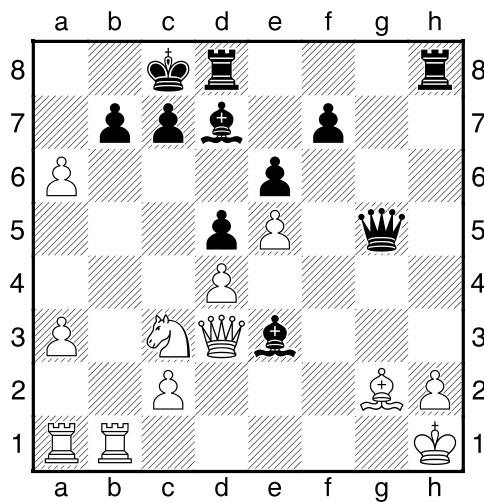
22.Kh1³ h3 [Black has a mate threat]

[¹22...a5³]

23.bxa6?? [De winst is opeens weer ver weg.]

[¹23.g3 Was de enige mogelijkheid de strijd gaande te houden. 23...a5 24.Te1=]

23...hgx2+ 24.Lxg2 [Diagram



]

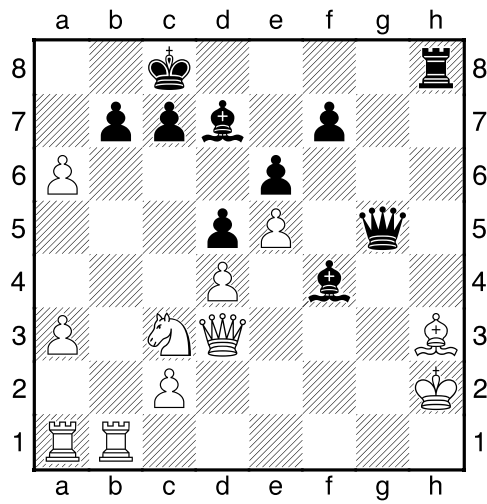
24...Txb2+!! [Lokaas: h3. .]

25.Kxb2 [25.Kxb2 Df4+ Mat aanval Lokaas]

25...Th8+ [25...Df4+ 26.Kh3 Th8+ 27.Dh7 Txb7#]

26.Lh3 [26.Dh7 Dit verbetert nauwelijks iets aan de stelling. 26...Txb7+ 27.Lh3 Lf4+ 28.Kh1 Txb3#]

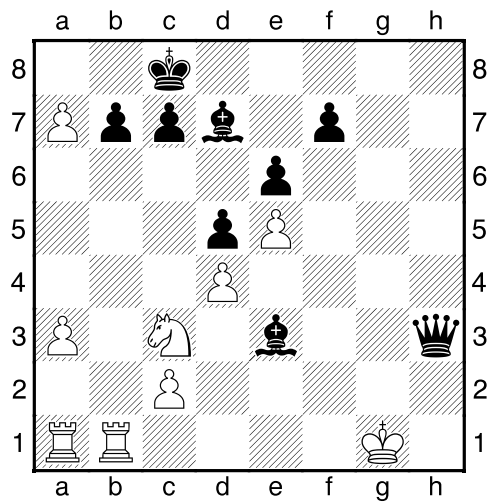
26...Lf4+ [Diagram



]

[26...Df4+ 27.Kg2 Df2+ 28.Kh1 Txb3#]

27.Kh1–+ Dg4 28.a7 Txb3+ 29.Dxb3 Dxb3+ 30.Kg1 Le3# [Diagram



]

0-1